

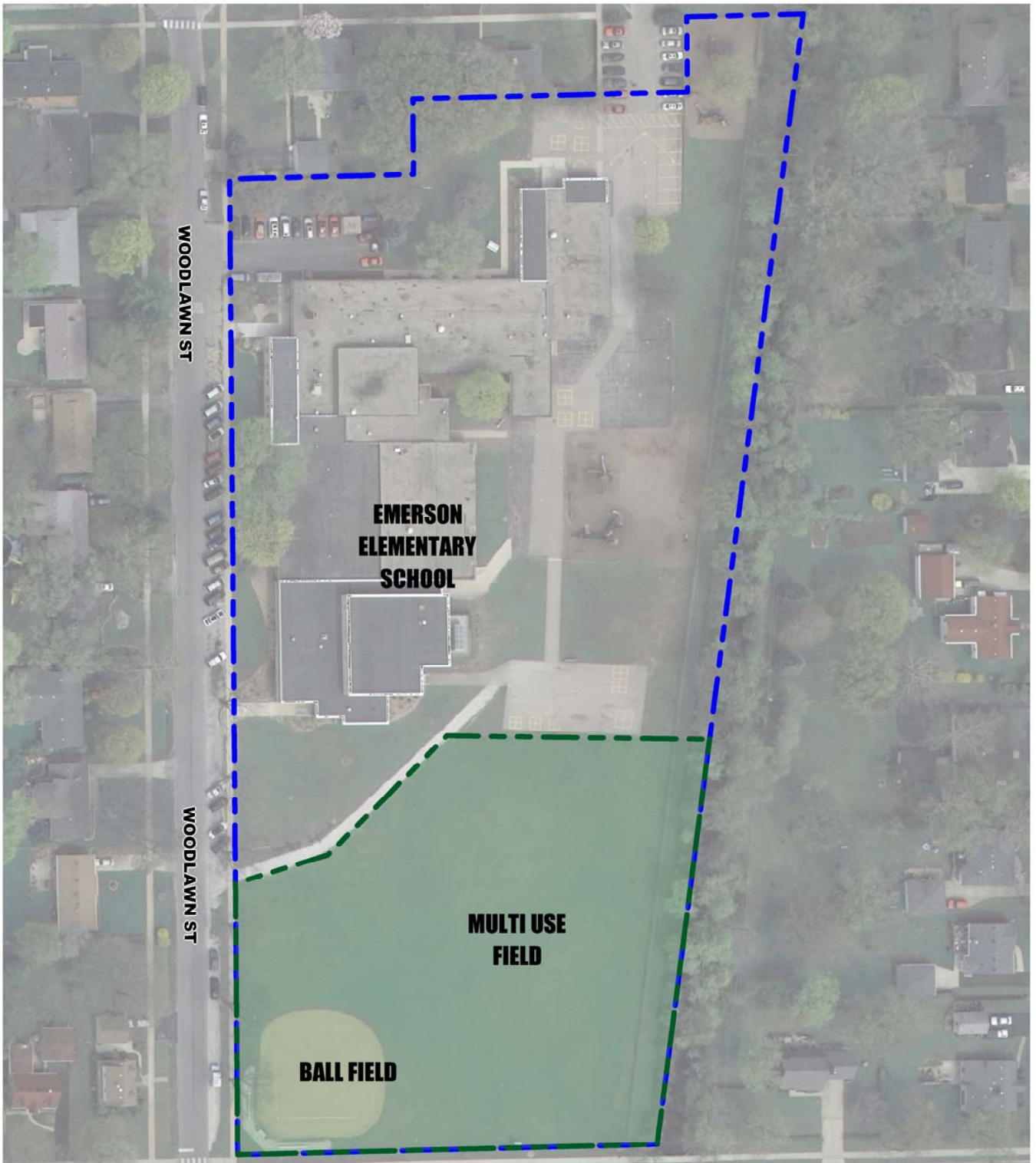
6.0 Park – School Agreement/Use and Development Plan

6.1 School Usage Summary

The Wheaton Park District cooperates with Community Unit School District 200 in order to provide programs and facilities to our mutual constituents. Park programs such as sports leagues and adult education classes utilize field space, gymnasiums and classrooms. In exchange, the park district maintains some of these areas as summarized below. This arrangement is articulated in the park/school agreement originally created in 1977 and last revised in 1998.

In the fall of 2009, Hubble Middle School will be relocating to the newly constructed facility located in Warrenville. It is anticipated that the existing location will be redeveloped in the near future. This may result in a loss of over 20% of the field space and 1/3 of the gyms that we utilize from CUSD 200. If these losses are realized, it is appropriate to review how equitable our current arrangement is.

School Name	Ball Field	Multi Purpose Field	Gym/ Field House	Acres for Recreation	Acres Mowed	Ball Field Maintenance	Trash	Snow Removal
Emerson	1	1		2.01	2.01	1	X	
Franklin	2			2.38	2.38	2	X	
Hawthorne	1	1		1.77		1	X	
Hubble	3	2	3	13.56	13.56	3	X	
Jefferson	2	2		3.88	3.88	2	X	
Lincoln	1			2.93		1	X	X
Longfellow								
Lowell	2			1.02		2	X	
Madison	1	1		2.06		1	X	X
Sandburg		1		4.12				
St. Francis	2			6.11		1		
Washington	1	1		2.20		1	X	
Wheaton North	2	1	3	10.10				X
WW South	1	1	3	4.68				X
Whittier		1		3.55	8.82		X	
Wiesbrook	1			2.55				
Summary	20	12	9	62.92	30.65	15	10	4

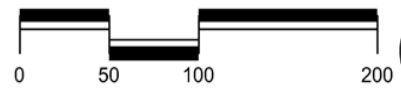


*TYPE: SCHOOL SITE
 *ACRES: 6.24 TOTAL
 2.01 RECREATION

*1 BALL FIELD
 *1 MULTI USE FIELD

*MAINTENANCE
 -BALL FIELD
 -TRASH

*LEVEL: ELEMENTARY



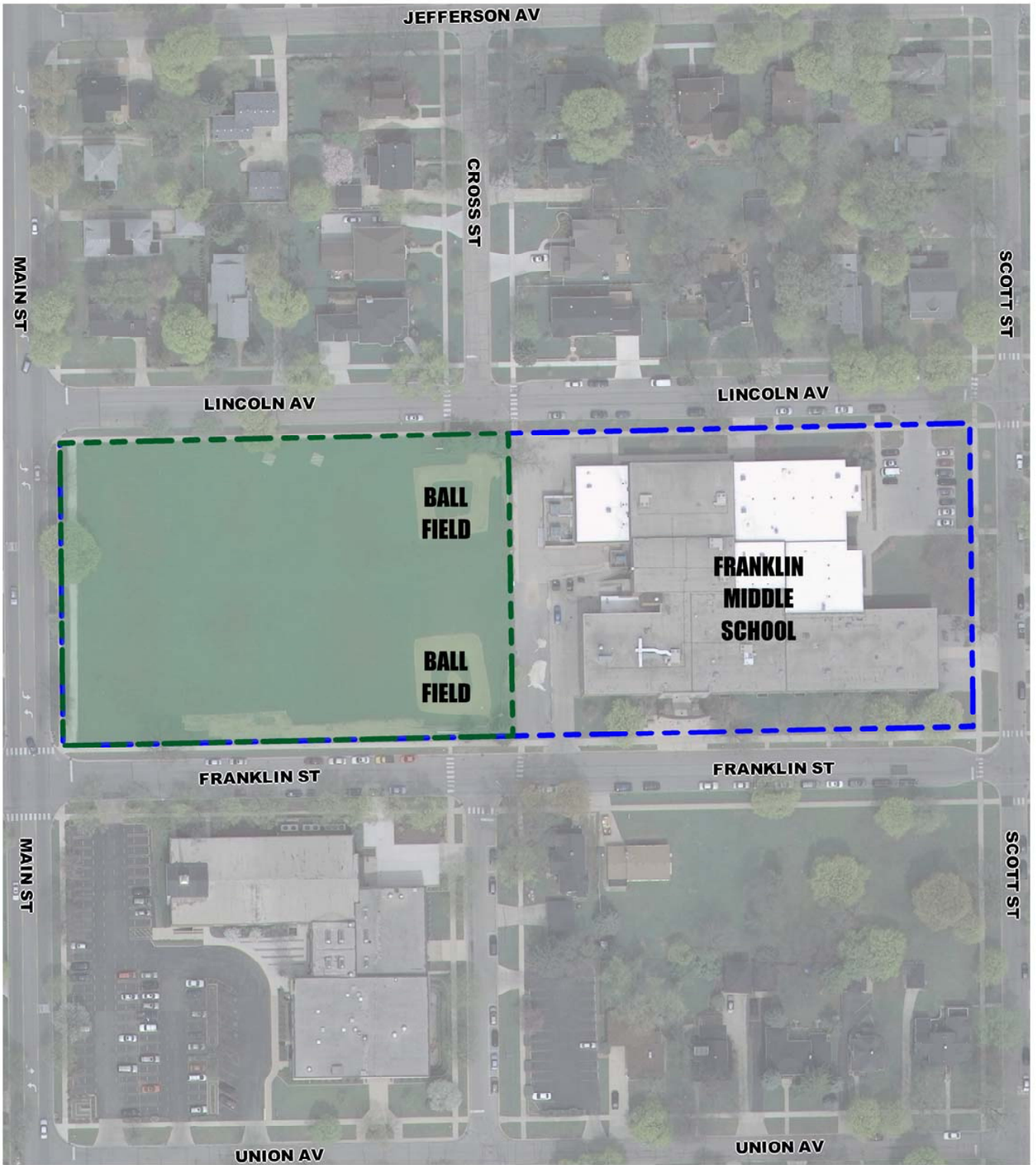
**WHEATON
 PARK DISTRICT**

2009
 102 E. WESLEY WHEATON IL 60187
 (630) 665-4710

**EMERSON
 MASTER PLAN**

6.2

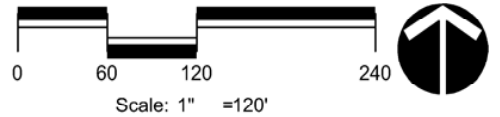
drawn by:		revised by:	
date:		date:	
checked by:		revised by:	
date:		date:	
file name:	emersonschools	revised by:	
	1:01 park masterplan	date:	



*TYPE: SCHOOL SITE
 *ACRES: 4.84 TOTAL
 2.38 RECREATION
 *LEVEL: MIDDLE SCHOOL

*2 BALL FIELDS

*MAINTENANCE
 -MOW
 -TURF CARE
 -BALL FIELDS
 -TRASH



**WHEATON
 PARK DISTRICT**
 2009
 102 E. WESLEY WHEATON IL 60187
 (630) 665-4710

**FRANKLIN
 MASTER PLAN**

6.3

drawn by:	revised by:
date:	date:
checked by:	revised by:
date:	date:
file name: wheatparkschools	revised by:
E:\01 park\mstr\masterplan	date:

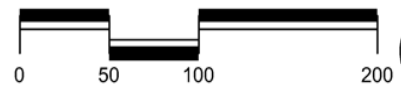


*TYPE: SCHOOL SITE
 *ACRES: 4.37 TOTAL
 1.77 RECREATION

*1 BALL FIELD
 *1 MULTI USE FIELD

*MAINTENANCE
 - BALL FIELD
 - TRASH
 - TURF CARE BY REQUEST

*LEVEL: ELEMENTARY



Scale: 1" = 100'



2009

**WHEATON
 PARK DISTRICT**

102 E. WESLEY WHEATON IL 60187
 (630) 665-4710

**HAWTHORNE
 MASTER PLAN**

6.4

drawn by:		revised by:	
date:		revised by:	
checked by:		date:	
date:		revised by:	
file name: masterplanschools		date:	
E:\01 park\masterplan			



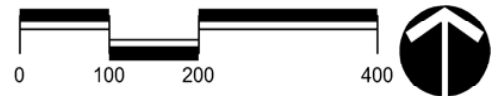
*TYPE: SCHOOL SITE

*ACRES: 22.66 TOTAL
13.56 RECREATION

*LEVEL: MIDDLE SCHOOL

- *3 BALL FIELDS
- *1 MULTI USE FIELD
- *1 SOCCER FIELD (LIGHTED)
- *3 GYMS
- INDOOR BATTING CAGES

- *MAINTENANCE
- MOW
- TURF CARE
- BALL FIELDS
- TRASH



Scale: 1" =200'



**WHEATON
PARK DISTRICT**

2009

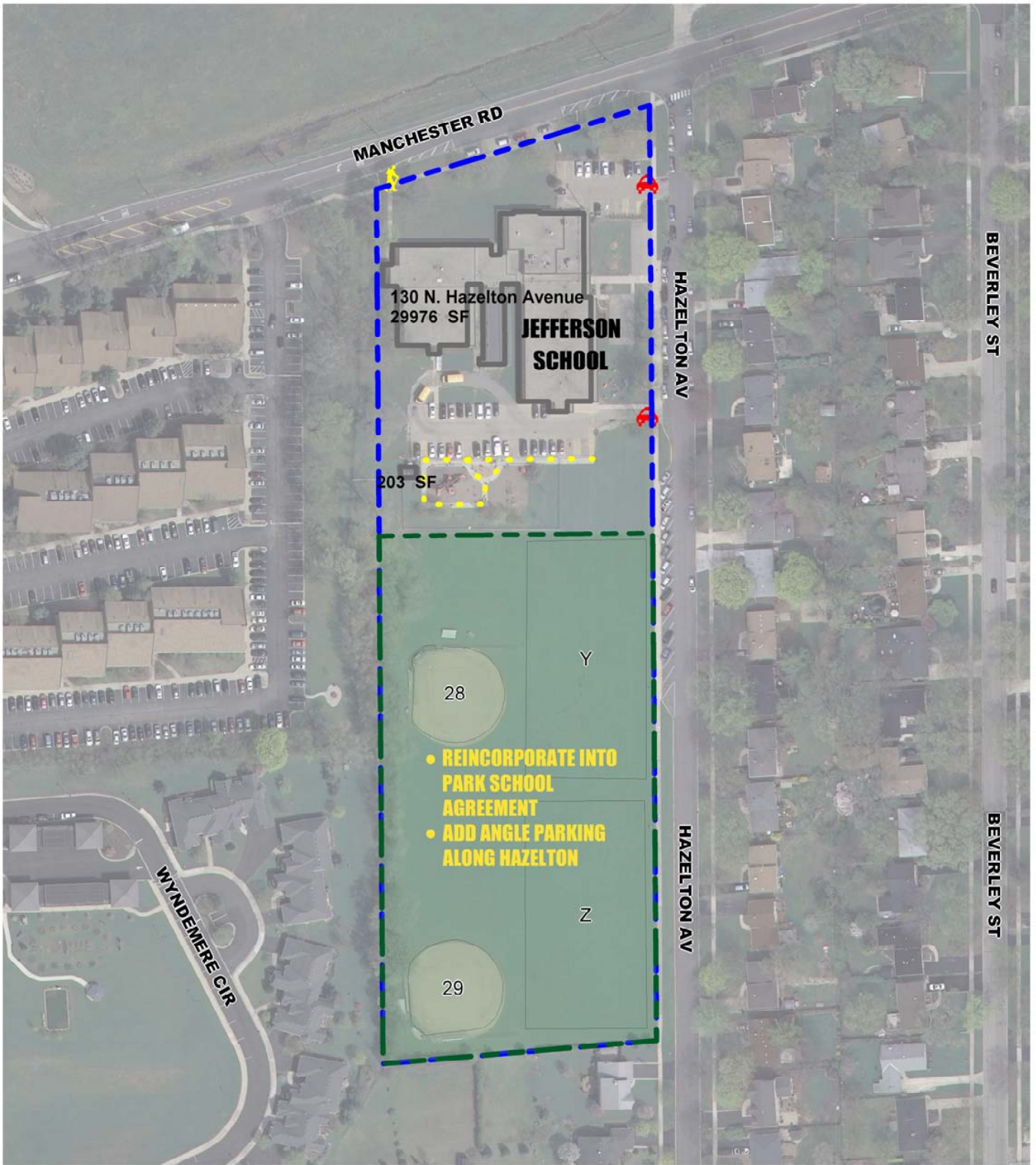
102 E. WESLEY WHEATON IL 60187
(630) 665-4710

**HUBBLE
MASTER PLAN**

6.5

drawn by:	revised by:
date:	date:
checked by:	revised by:
date:	date:
file name: hubblemshschools	revised by:
	date:

F:\01 park\hubblemasterplan



- REINCORPORATE INTO PARK SCHOOL AGREEMENT
- ADD ANGLE PARKING ALONG HAZELTON

*TYPE: SCHOOL SITE
 *ACRES: 6.79 TOTAL
 3.88 RECREATION
 *LEVEL: PRESCHOOL

*2 BALL FIELDS
 *2 MULTI USE FIELDS

*MAINTENANCE
 -MOW
 -TURF CARE
 -BALL FIELDS
 -TRASH



**WHEATON
 PARK DISTRICT**

2009
 102 E. WESLEY WHEATON IL 60187
 (630) 665-4710

**JEFFERSON SCHOOL
 MASTER PLAN**

6.6

drawn by:	revised by:
date:	date:
checked by:	revised by:
date:	date:
file name: masterplanschools	revised by:
1:01 park masterplan	date:



*TYPE: SCHOOL SITE
 *ACRES: 7.63 TOTAL
 2.93 RECREATION
 *LEVEL: ELEMENTARY

*1 BALL FIELD

*MAINTENANCE
 -BALL FIELD
 -CLEAR SNOW FROM
 SCHOOL TO PARK



**WHEATON
 PARK DISTRICT**

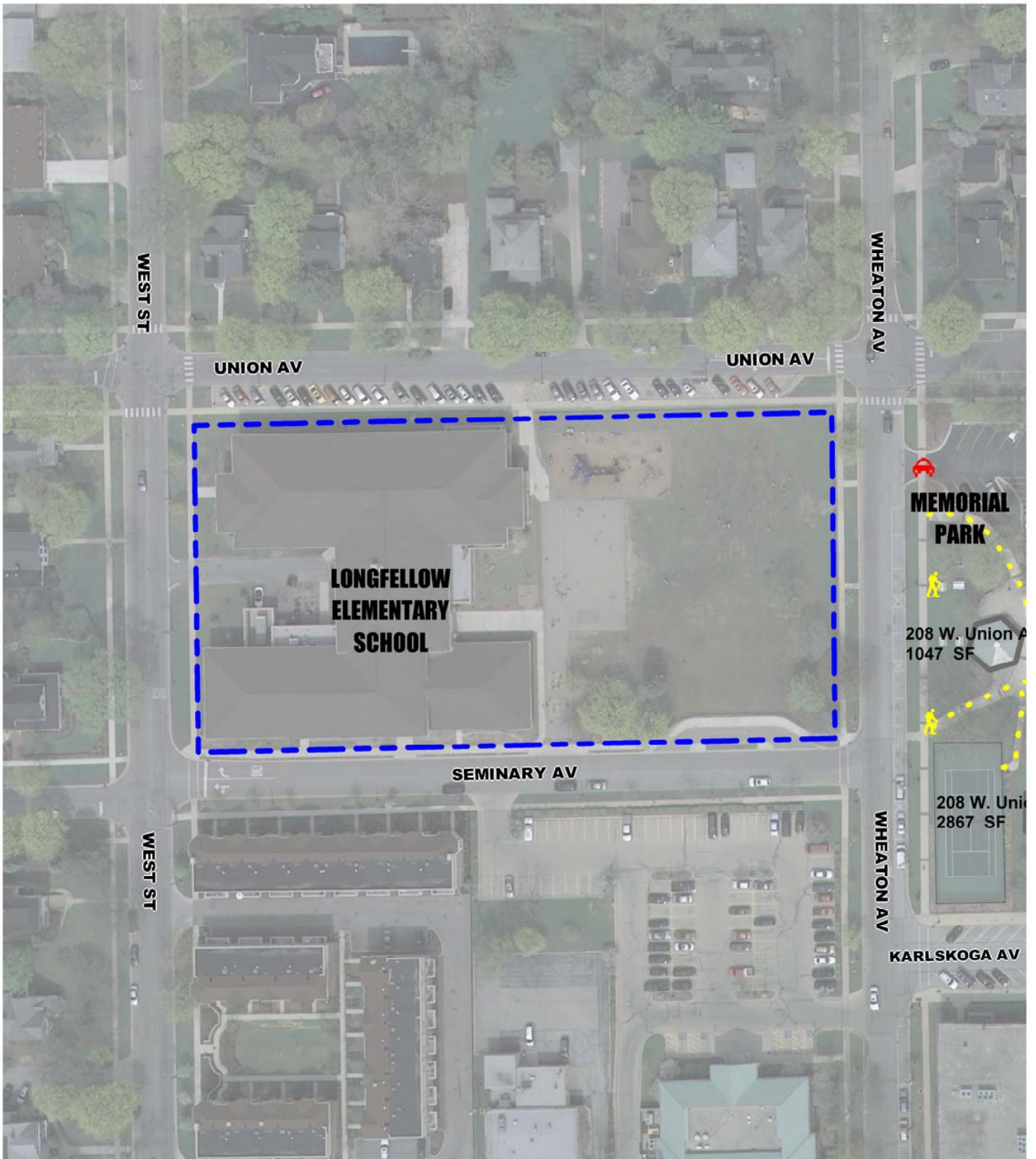
2009

102 E. WESLEY WHEATON IL 60187
 (630) 665-4710

**LINCOLN
 MASTER PLAN**

6.7

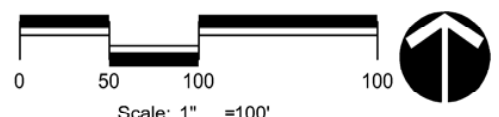
drawn by:	revised by:
date:	date:
checked by:	revised by:
date:	date:
file name: masterplanschools	revised by:
E:\01 park\mstr\masterplan	date:



*TYPE: SCHOOL SITE
 *ACRES: 2.56 TOTAL
 0.00 RECREATION

*MAINTENANCE
 -TURF CARE BY REQUEST

*LEVEL ELEMENTARY



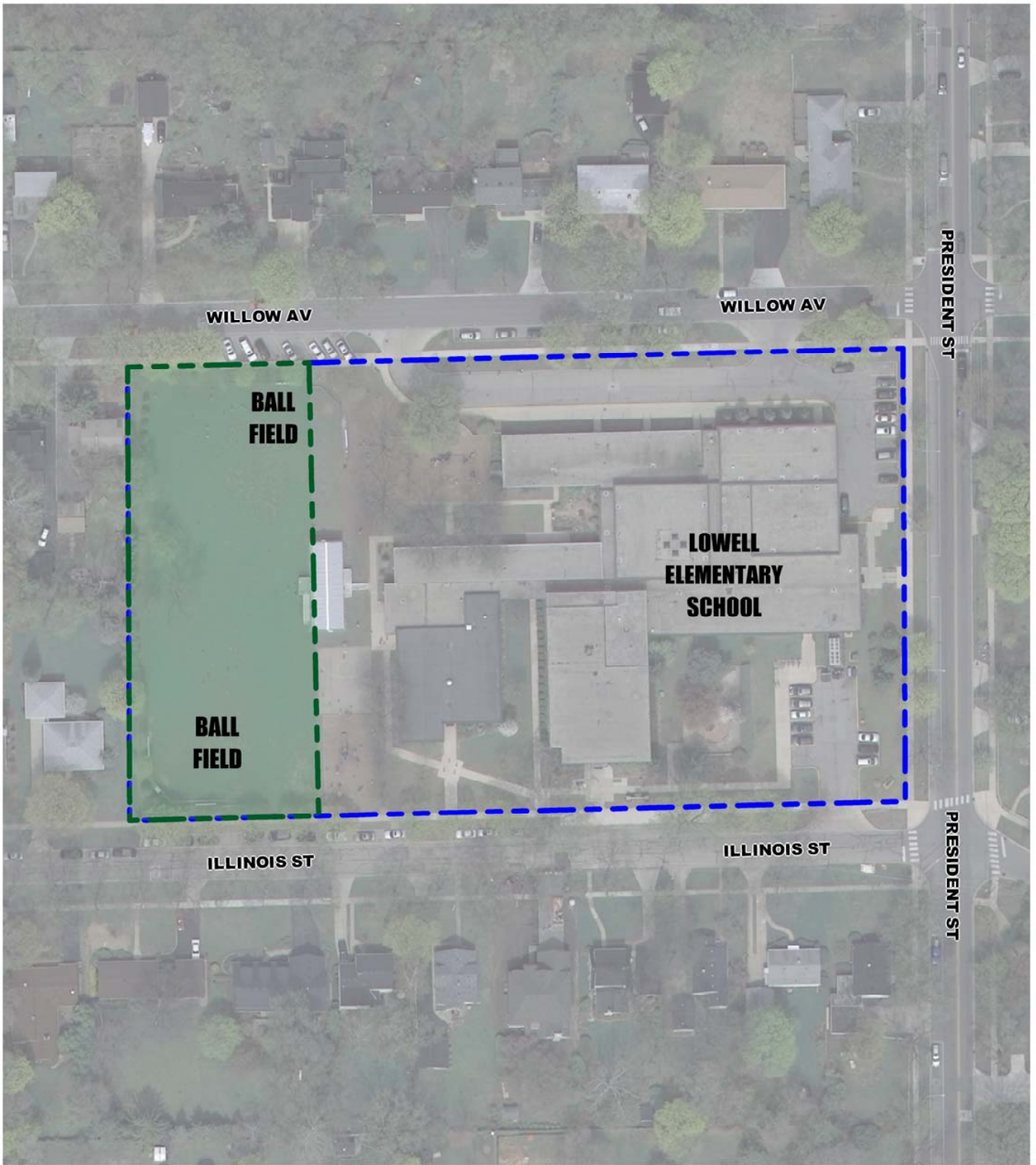
**WHEATON
 PARK DISTRICT**
 102 E. WESLEY WHEATON IL 60187
 (630) 665-4710

**LONGFELLOW
 MASTER PLAN**

6.8

drawn by:		revised by:	
date:		date:	
checked by:		revised by:	
date:		date:	
file name: masterplanschools		revised by:	
		date:	

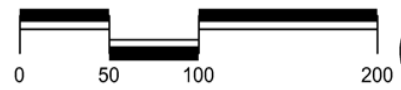
F:\01 park\masterplan



*TYPE: SCHOOL SITE
 *ACRES: 4.29 TOTAL
 1.02 RECREATION
 *LEVEL: ELEMENTARY

*2 BALL FIELD

*MAINTENANCE
 -BALL FIELDS
 -TRASH
 -TURF CARE BY REQUEST

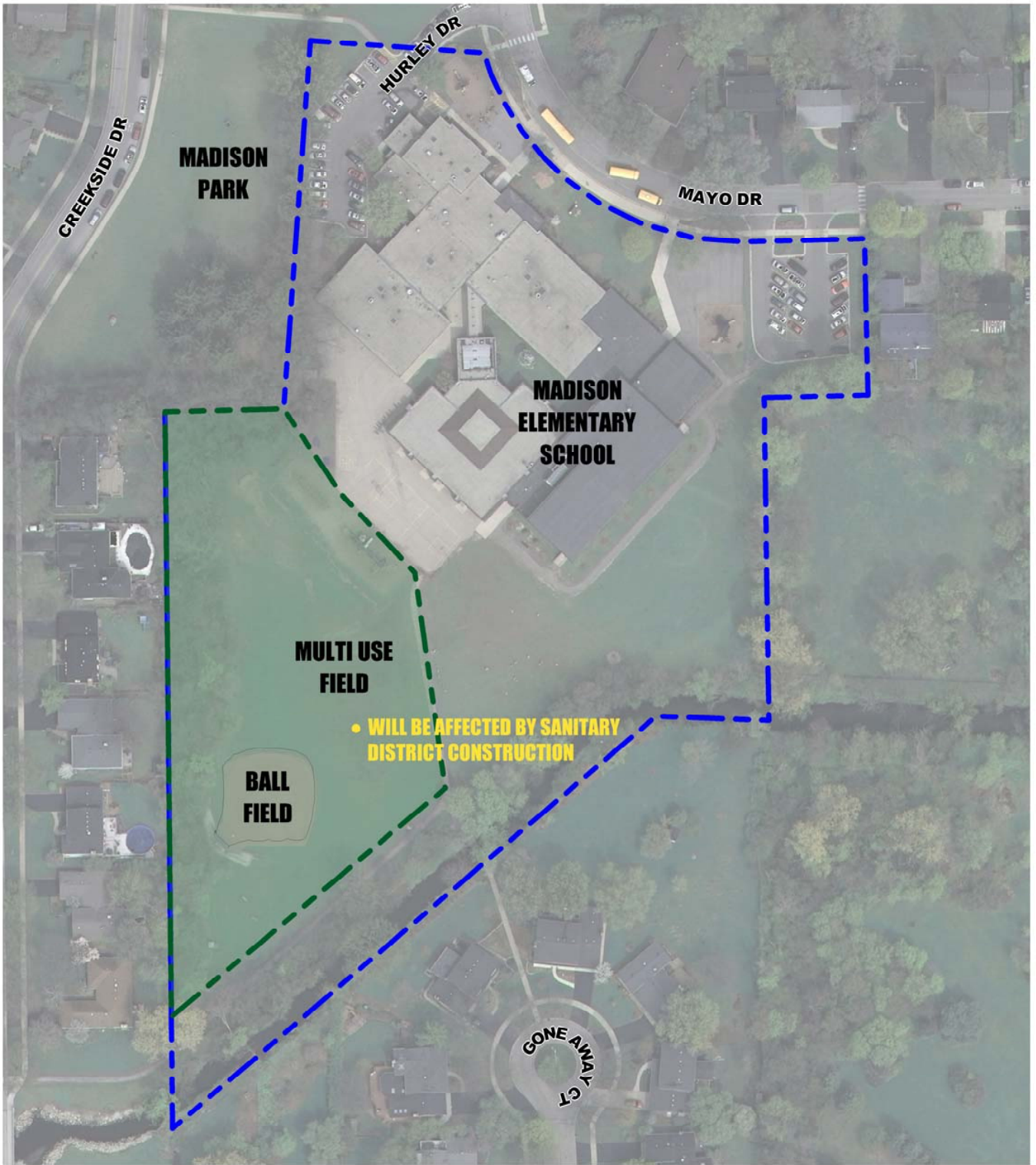


**WHEATON
 PARK DISTRICT**
 2009
 102 E. WESLEY WHEATON IL 60187
 (630) 665-4710

**LOWELL
 MASTER PLAN**

6.9

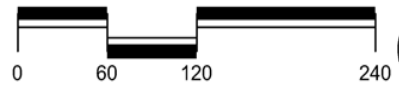
drawn by:	revised by:
date:	date:
checked by:	revised by:
date:	date:
file name: masterplan	revised by:
	date:



*TYPE: SCHOOL SITE
 *ACRES: 7.53 TOTAL
 2.06 RECREATION
 *LEVEL: ELEMENTARY

*1 BALL FIELD
 *1 MULTI USE FIELD

*MAINTENANCE
 -BALL FIELDS
 -TRASH
 -CLEAR SNOW FROM
 PARK TO SCHOOL
 -HERBICIDE



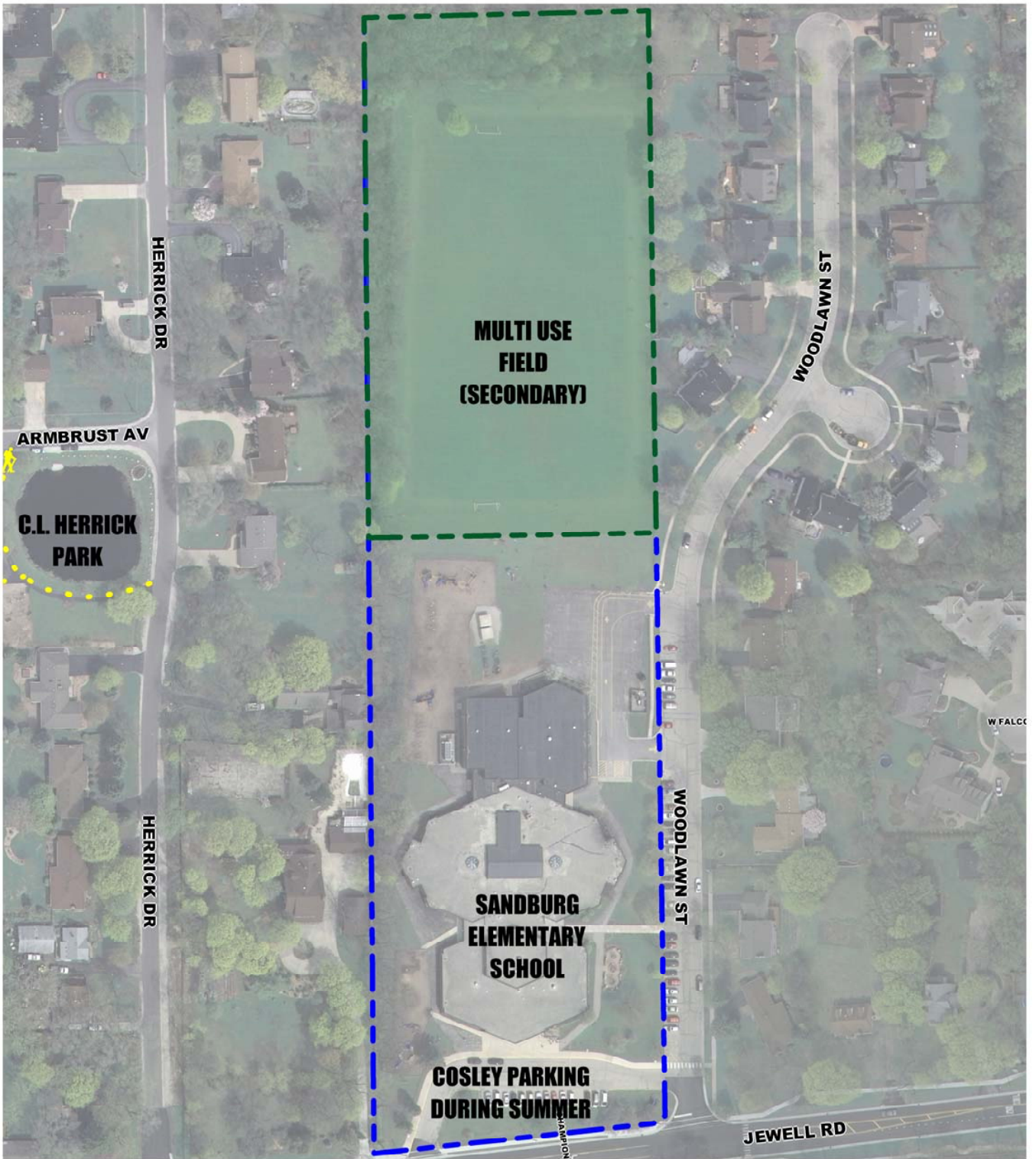
**WHEATON
 PARK DISTRICT**

2009
 102 E. WESLEY WHEATON IL 60187
 (630) 665-4710

**MADISON
 MASTER PLAN**

6.10

drawn by:	revised by:
date:	date:
checked by:	revised by:
date:	date:
file name: madisonschools	revised by:
E:\01 park\mstrmasterplan	date:



*TYPE: SCHOOL SITE
 *ACRES: 8.94 TOTAL
 4.12 RECREATION

*LEVEL: ELEMENTARY

*1 MULTI USE FIELD
 *COSLEY PARKING (SUMMER)
 *CLASSROOM SPACE FOR LINCOLN MARSH IN BAD WEATHER

*MAINTENANCE -TURF CARE BY REQUEST



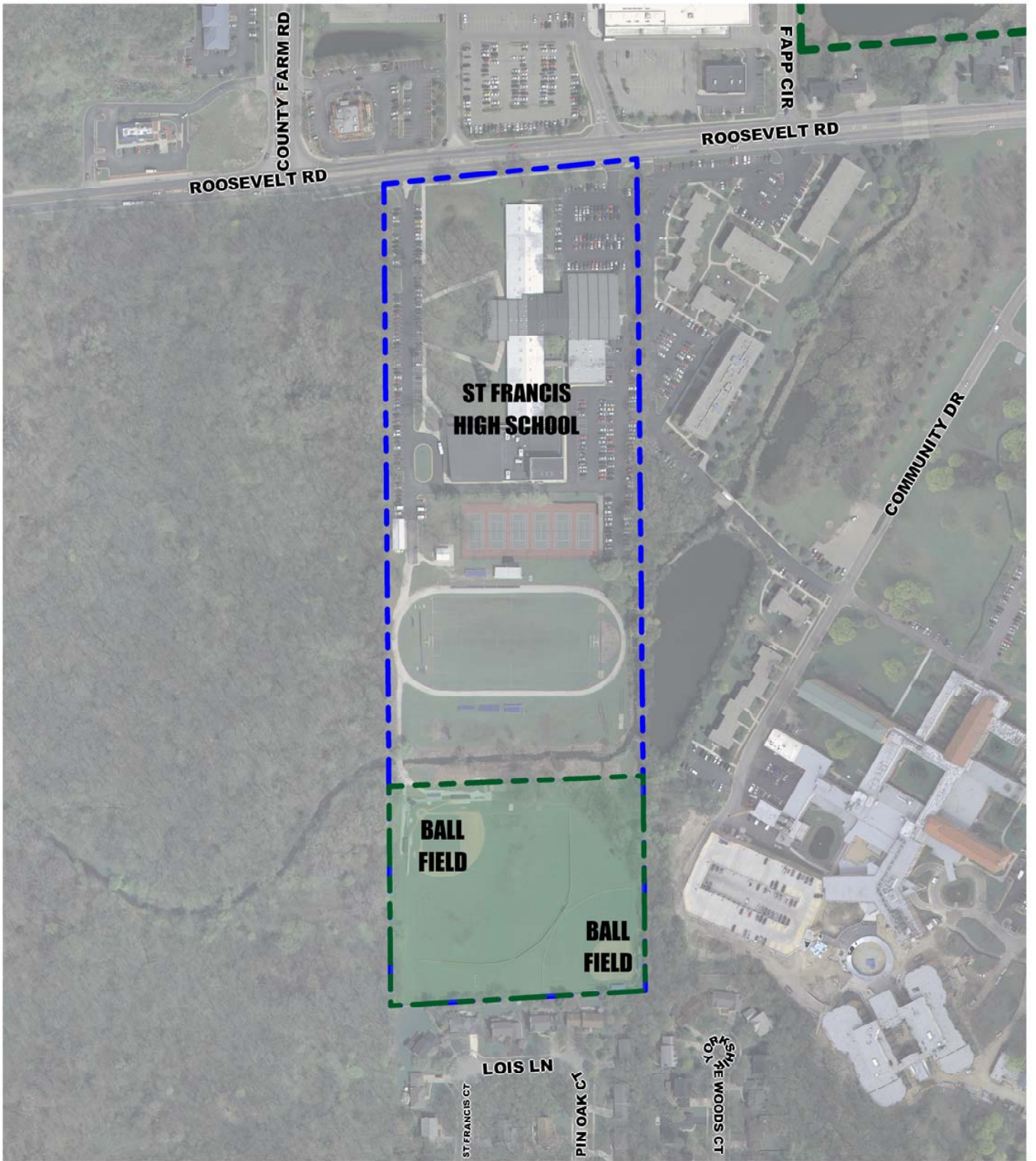
**WHEATON
 PARK DISTRICT**

2009
 102 E. WESLEY WHEATON IL 60187
 (630) 665-4710

**SANDBURG
 MASTER PLAN**

6.11

drawn by:	revised by:
date:	date:
checked by:	revised by:
date:	date:
file name: sandburgschools	revised by:
1:01 park masterplan	date:

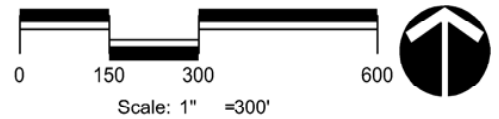


*TYPE: SCHOOL SITE
 *ACRES: 23.21 TOTAL
 6.11 RECREATION

*2 BALL FIELD

*MAINTENANCE
 -BALL FIELD

*LEVEL: HIGH SCHOOL

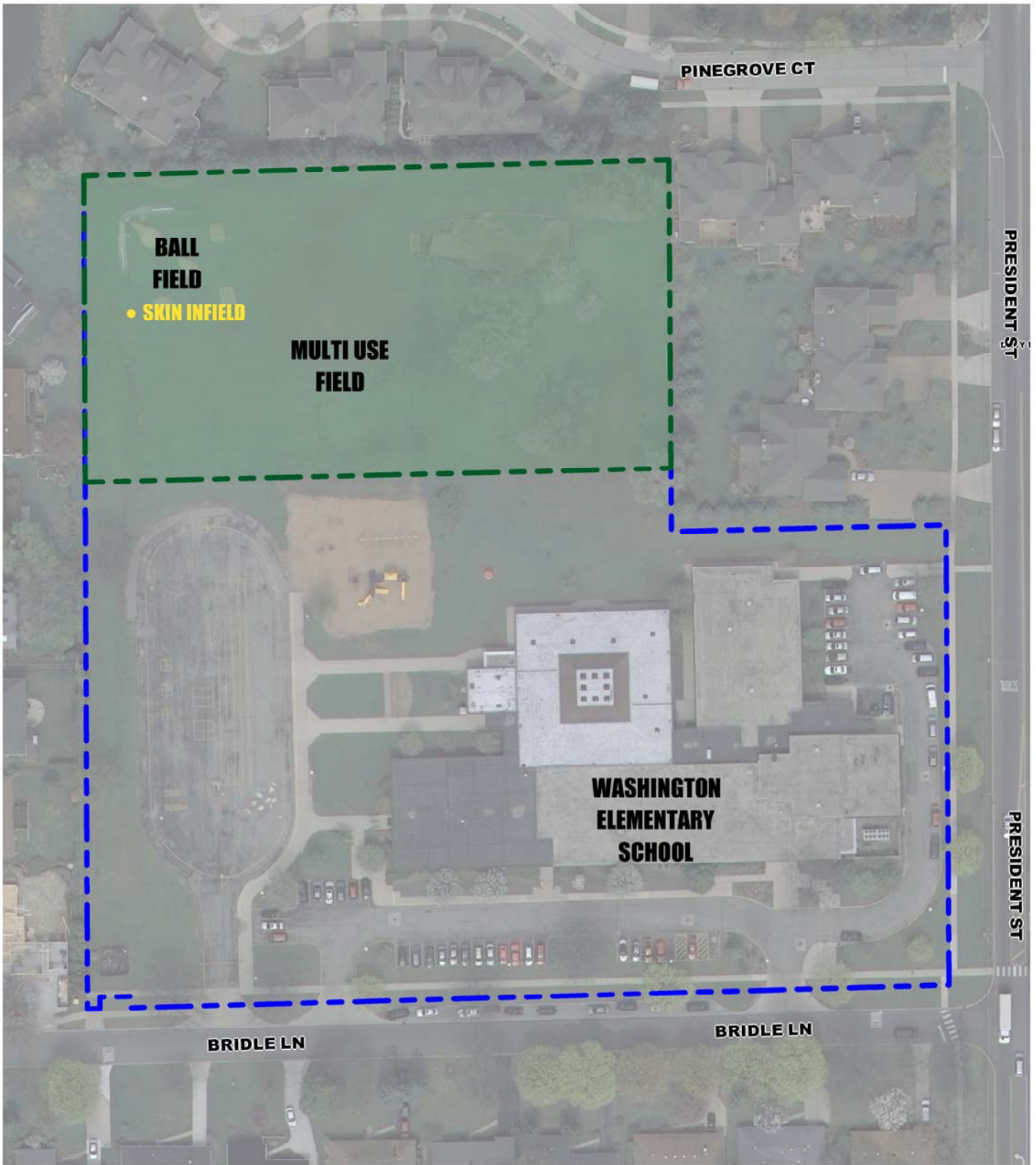


**WHEATON
 PARK DISTRICT**
 2009
 102 E. WESLEY WHEATON IL 60187
 (630) 665-4710

**ST FRANCIS
 MASTER PLAN**

6.12

drawn by:		revised by:	
date:		date:	
checked by:		revised by:	
date:		date:	
file name: wheatparkschools		revised by:	
E:\01 park\mstr\masterplan		date:	

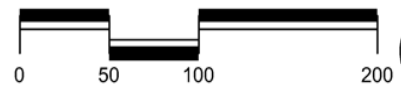


*TYPE: SCHOOL SITE
 *ACRES: 7.49 TOTAL
 2.20 RECREATION

*1 BALL FIELD
 *1 MULTI USE FIELD

*MAINTENANCE
 -BALL FIELD
 -TRASH
 -TURF CARE BY REQUEST

*LEVEL ELEMENTARY



**WHEATON
 PARK DISTRICT**

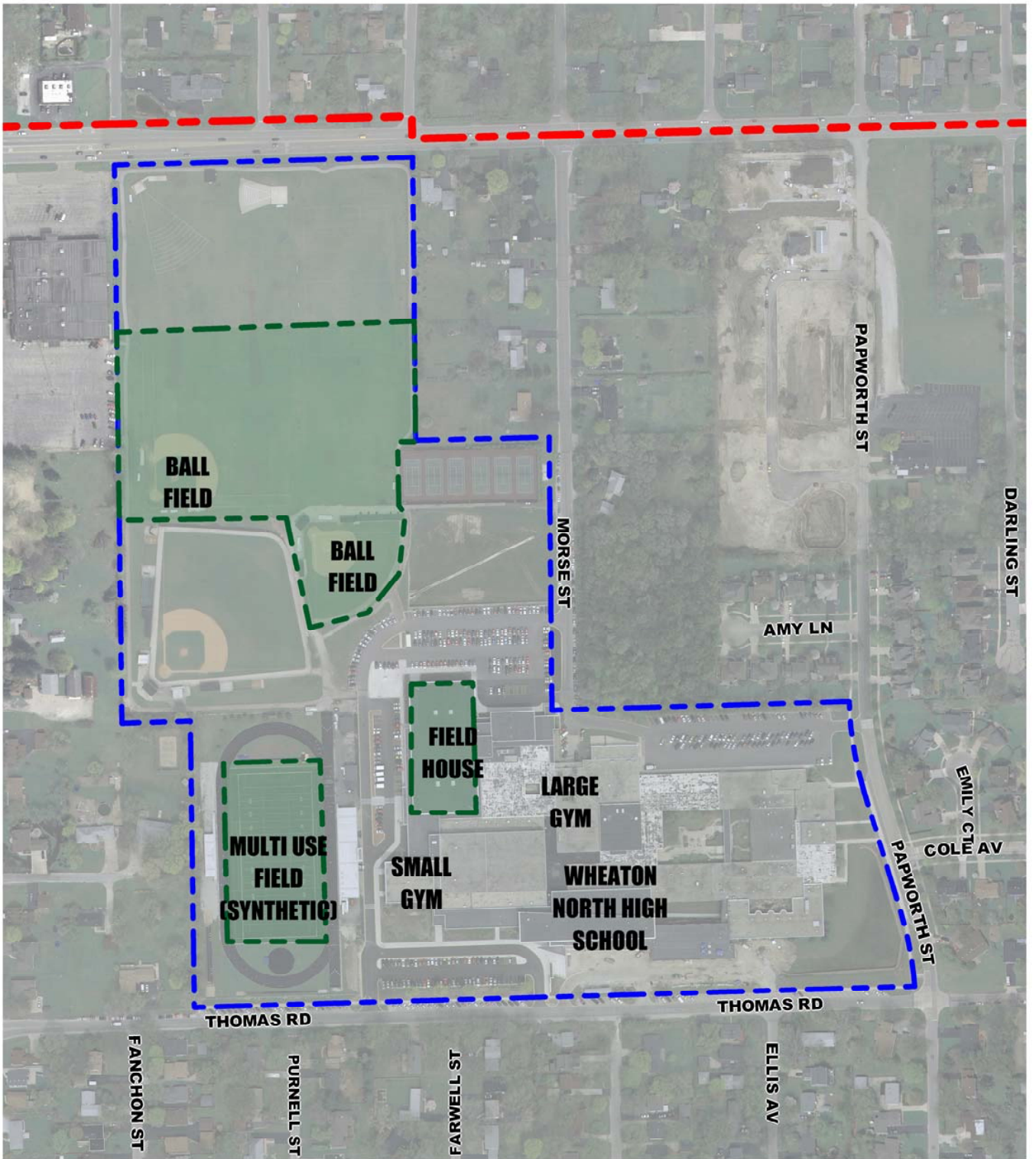
2009

102 E. WESLEY WHEATON IL 60187
 (630) 665-4710

**WASHINGTON
 MASTER PLAN**

6.13

drawn by:	revised by:
date:	date:
checked by:	revised by:
date:	date:
file name: wheatparkschools	revised by:
1:01 park masterplan	date:



*TYPE: SCHOOL SITE
 *ACRES: 44.19 TOTAL
 10.10 RECREATION
 *LEVEL: HIGH SCHOOL

*2 BALL FIELDS
 *1 MULTI USE FIELD
 *FIELD HOUSE (PARKS PLUS
 FITNESS SATELLITE)
 *2 GYMS

*MAINTENANCE
 -PLOW ARMBRUST LOT
 -BALL FIELD BY
 REQUEST (AFTER
 SCHOOL SEASON)

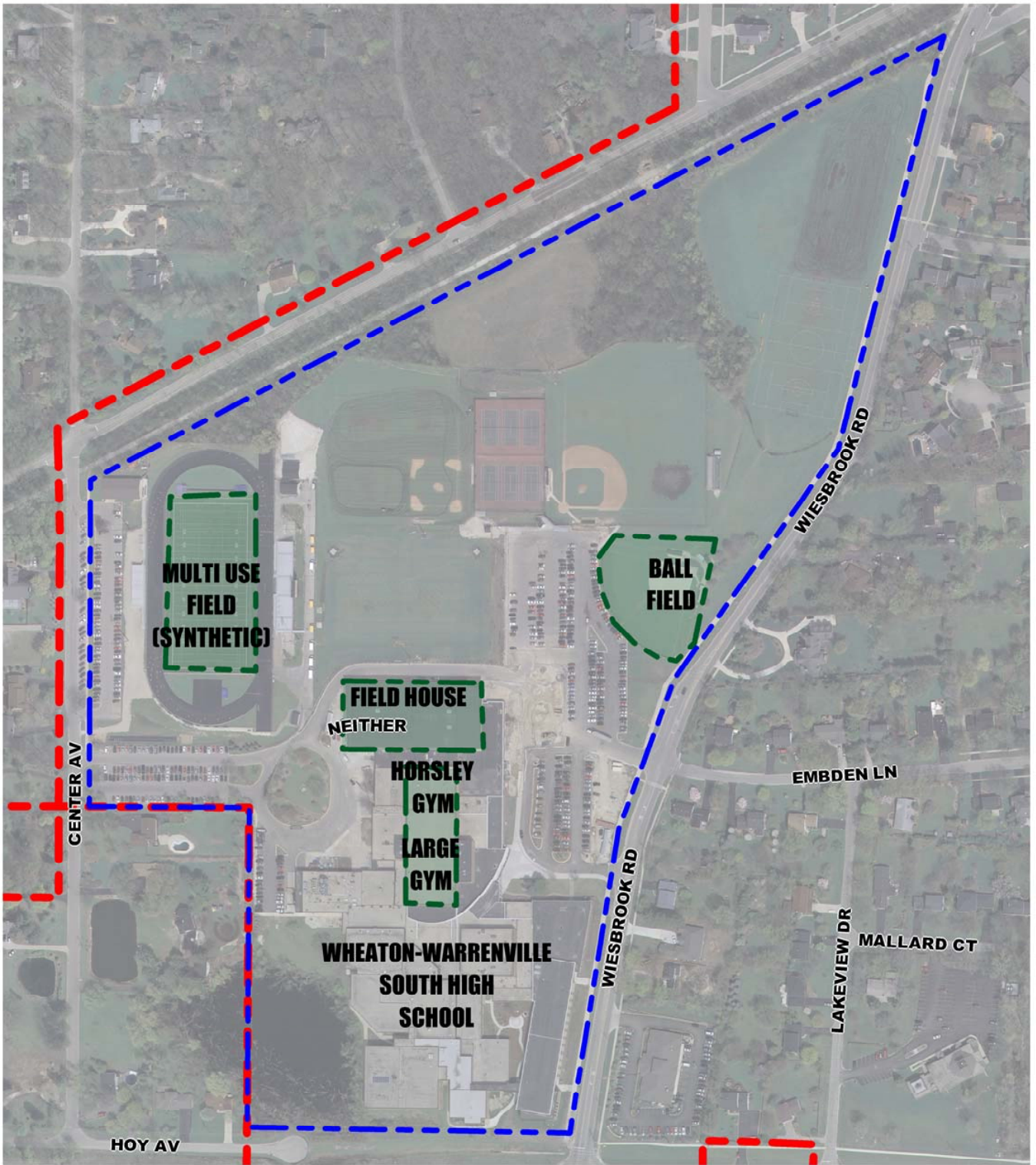


**WHEATON
 PARK DISTRICT**
 2009
 102 E. WESLEY WHEATON IL 60187
 (630) 665-4710

**WHEATON NORTH
 MASTER PLAN**

6.14

drawn by:	revised by:
date:	date:
checked by:	revised by:
date:	date:
file name: wheatnhschools	revised by:
1:01 park masterplan	date:



*TYPE: SCHOOL SITE
 *ACRES: 52.53 TOTAL
 4.68 RECREATION
 *LEVEL: HIGH SCHOOL

*1 BALL FIELD
 *1 MULTI USE FIELD
 *FIELD HOUSE (PARKS PLUS FITNESS SATELLITE)
 *2 GYMS

*MAINTENANCE
 -PLOW LOTS AT ATTEN FOR STUDENT PARKING
 -BALL FIELDS BY REQUEST (AFTER SCHOOL SEASON)



**WHEATON
 PARK DISTRICT**

2009

102 E. WESLEY WHEATON IL 60187
 (630) 665-4710

**WHEATON-WARRENVILLE SOUTH
 MASTER PLAN**

6.15

drawn by:	revised by:
date:	date:
checked by:	revised by:
date:	date:
file name: wheatonhighschools	revised by:
	date:

F:\01 park\mstrmasterplan

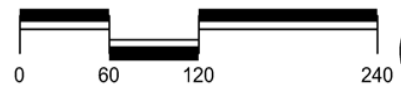


*TYPE: SCHOOL SITE
 *ACRES: 8.82 TOTAL
 3.55 RECREATION

*1 MULTI USE FIELD

*MAINTENANCE
 -MOW (ENTIRE SITE)
 -TURF CARE
 -TRASH

*LEVEL: ELEMENTARY
 *DISTRICT 200 OFFICES



**WHEATON
 PARK DISTRICT**

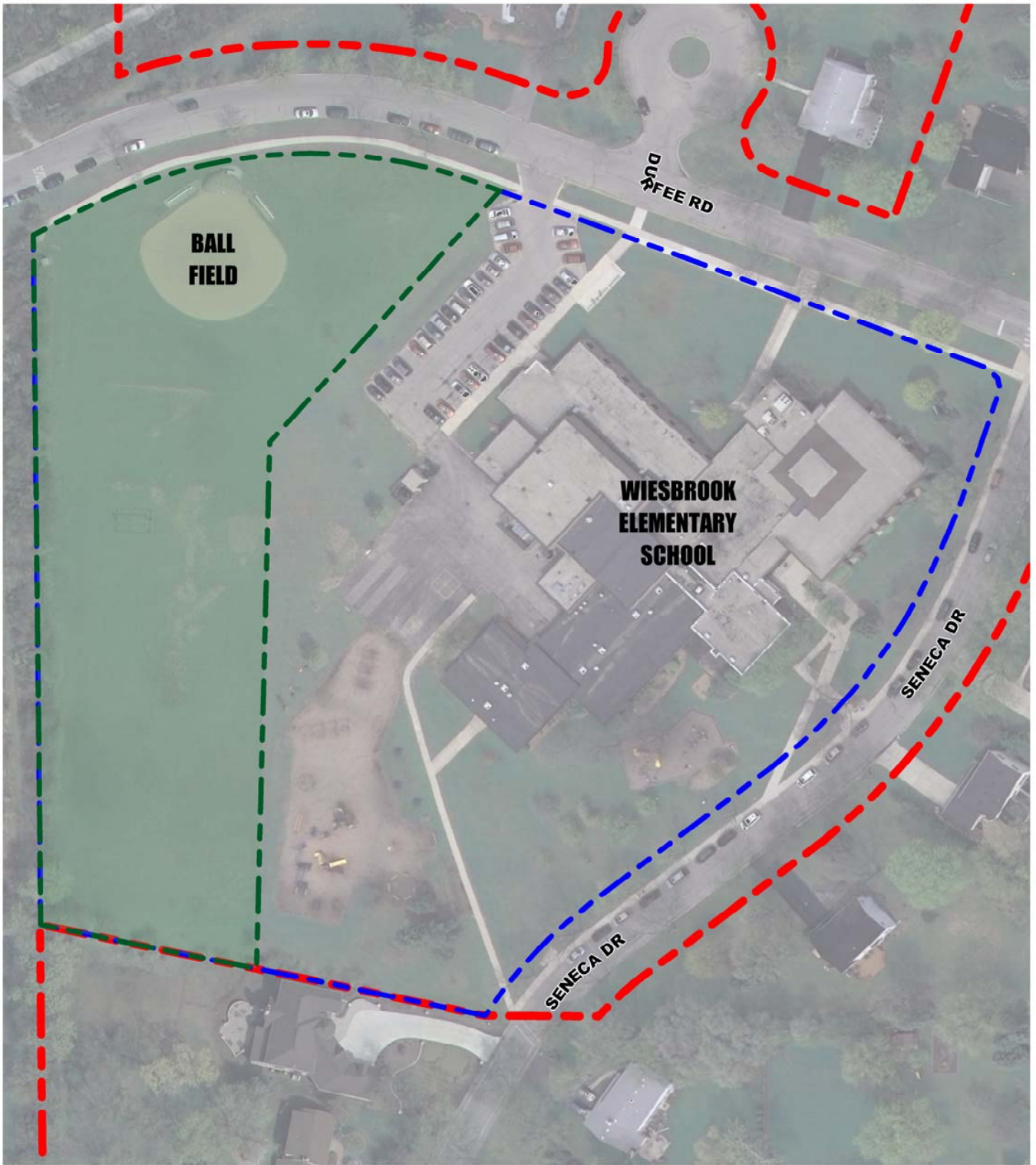
2009

102 E. WESLEY WHEATON IL 60187
 (630) 665-4710

**WHITTIER
 MASTER PLAN**

6.16

drawn by:	revised by:
date:	date:
checked by:	revised by:
date:	date:
file name: masterplanschools	revised by:
101 park masterplan	date:

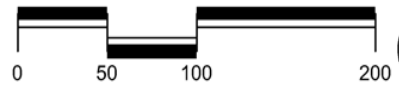


*TYPE: SCHOOL SITE
 *ACRES: 7.41 TOTAL
 2.55 RECREATION

*1 BALL FIELD

*MAINTENANCE
 -BALL FIELD

*LEVEL: ELEMENTARY



2009

**WHEATON
 PARK DISTRICT**

102 E. WESLEY WHEATON IL 60187
 (630) 665-4710

**WIESBROOK
 MASTER PLAN**

6.17

drawn by:	revised by:
date:	date:
checked by:	revised by:
date:	date:
file name: wiesbrookschools	revised by:
1:01 park masterplan	date: