



Annual Report 2015



Michelle Podkowa, Museum Manager and Educator
Ashley Downing, Museum Curator
Mychal Brown, Museum Assistant
Richard Napier, Museum Assistant
Morgan Valenzuela, Museum Assistant

your county. your **history.**



Cover Images:

Postcard Illustration of the DuPage County Historical Museum, 2016.

Image By: Christopher Arndt*

Daniel Goodwin of Inland Real Estate Group, INC. presenting a \$200,000 donation to the DuPage County Historical Museum Foundation for the roof replacement project, 2015.

Image By: Wheaton Park District (WPD) Staff.

Jedi Engineering with LEGOs Summer Camp, Museum Auditorium, 2015.

Image By: Museum Staff.

*Christopher Arndt's much loved photo-paintings are a creative blend of original photography and digital oil painting. His work covers a wide variety of subjects, including: custom home portraits, scenes throughout DuPage County, scenes of Door County, and landmarks of Chicago. He calls Wheaton, IL home and continues to transform the ordinary into the extraordinary. Learn more at www.ChristopherArndtImages.com.

Mr. Arndt's work is available in the Museum Gift Shop including the DuPage County Historical Museum postcard.



Table of Contents

Introduction.....	3
Mission Statement.....	3
Visitor Data.....	3
Financial Summary.....	6
Operating Budget Comparison.....	7
Education.....	8
Museum Events.....	8
Santa Express.....	8
Birthday Parties.....	8
Presentations.....	9
Camps.....	9
Guided Tours, School, and Scout Programs.....	9
Collection.....	10
Collection Status.....	10
Museum Research.....	10
Exhibits.....	11
Permanent Exhibits.....	11
Changing Exhibits.....	11
Institutional Stewardship: Accreditation.....	11
Facility Rentals.....	12
Grants.....	13
Awards.....	13
Personnel.....	14
Wheaton Park District Administration.....	14
Staff Development.....	14
Interns.....	14
Volunteers.....	15
What Our Stakeholders Say.....	15
Marketing.....	16
Social Media.....	17
DuPage County Historical Museum Foundation.....	18
DCHM Foundation Budget Comparison.....	19
Appendix.....	21
Appendix 1: Education.....	22
Appendix 2: Accreditation.....	23
Appendix 3: Grants & Awards.....	26
Appendix 4: Intern & Volunteer Hours.....	35
Appendix 5: Marketing.....	36

Introduction

DuPage County Historical Museum (DCHM) functions as the only institution dedicated to the collection, preservation and interpretation of the material culture documenting the county of DuPage, Illinois. The collections represent artifacts collected by the DuPage County Historical Society since 1929 as well as artifacts collected by the Museum since its founding in 1965. Services offered at the DuPage County Historical Museum include historically-based exhibitions, educational programs, birthday parties, archival reproductions, research assistance, guided tours, and venue rentals. The DuPage County Historical Museum Foundation, the 501(c)(3) organization that raises money for the Museum, provides special events and fundraisers throughout the year as well.

The DuPage County Historical Museum is located in downtown Wheaton, at the center of the city. Wheaton serves as county seat and is one of the more than 30 communities within DuPage County. The Museum draws visitors from DuPage and neighboring counties.

The Museum is open Monday-Friday 8:30am to 4:30pm, and Saturday-Sunday from 12:00pm to 4:00pm for a total of 48 hours per week.

Mission Statement

The DuPage County Historical Museum is operated as a facility of Wheaton Park District, owned by the County of DuPage by resolution of the County Board pursuant to state statute. Its principal purposes are to educate the general public through the collection, preservation, interpretation, and exhibition of materials which document the history of DuPage County and its relationship to Illinois and the nation, and to provide local history services for historical organizations and for scholarly endeavors.

Visitor Data

Visitor attendance is tracked on a daily basis by Museum Assistants. In 2015, the Museum served 6,913 visitors, up 4% from 2014. The data in the graphs on page 4 reflects visitor attendance from January 2015 through December 2015; comparisons to previous years are displayed in the graph on page 5.



2015 Visitors
6,913

2015 Total Reach
29,434

Total Outreach
19,077

Total Museum
Donations
\$16,208.64

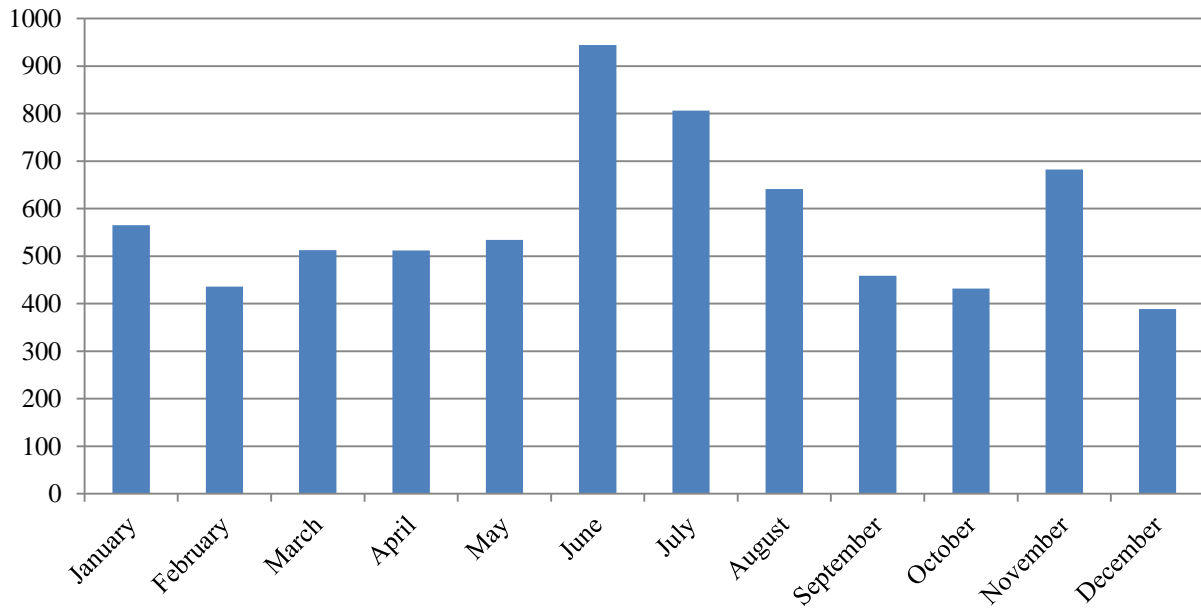


Landscape Workshop for Children in April. Image by Museum Staff.

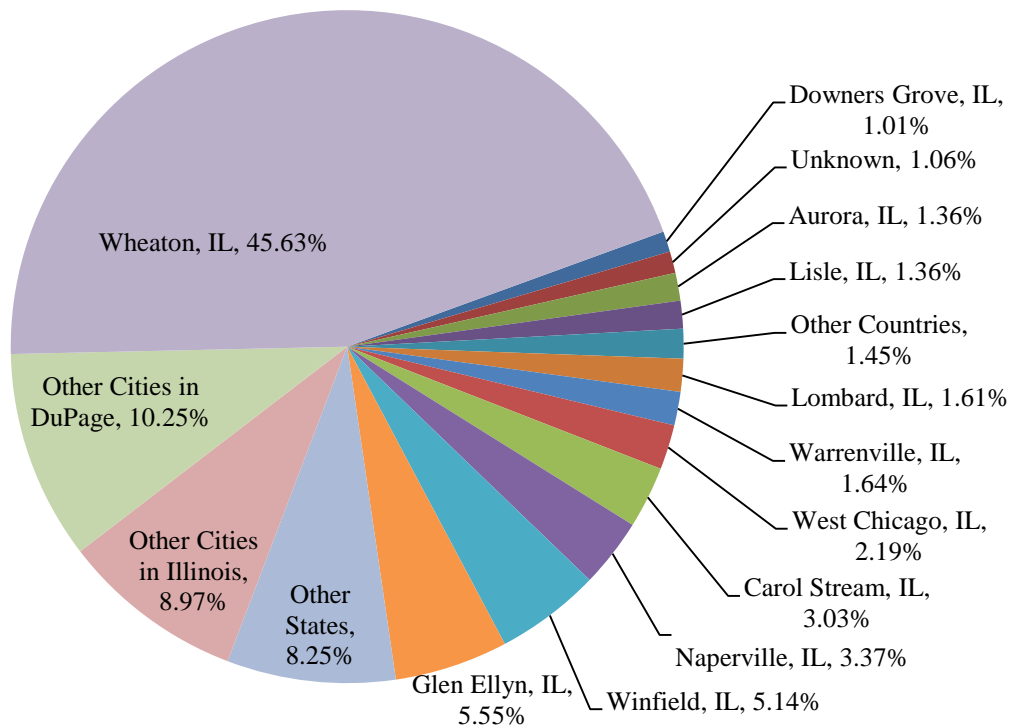


Beyond Glee caroling at the Annual Museum Guild Bazaar. Image by Museum Staff.

2015 Monthly Attendance



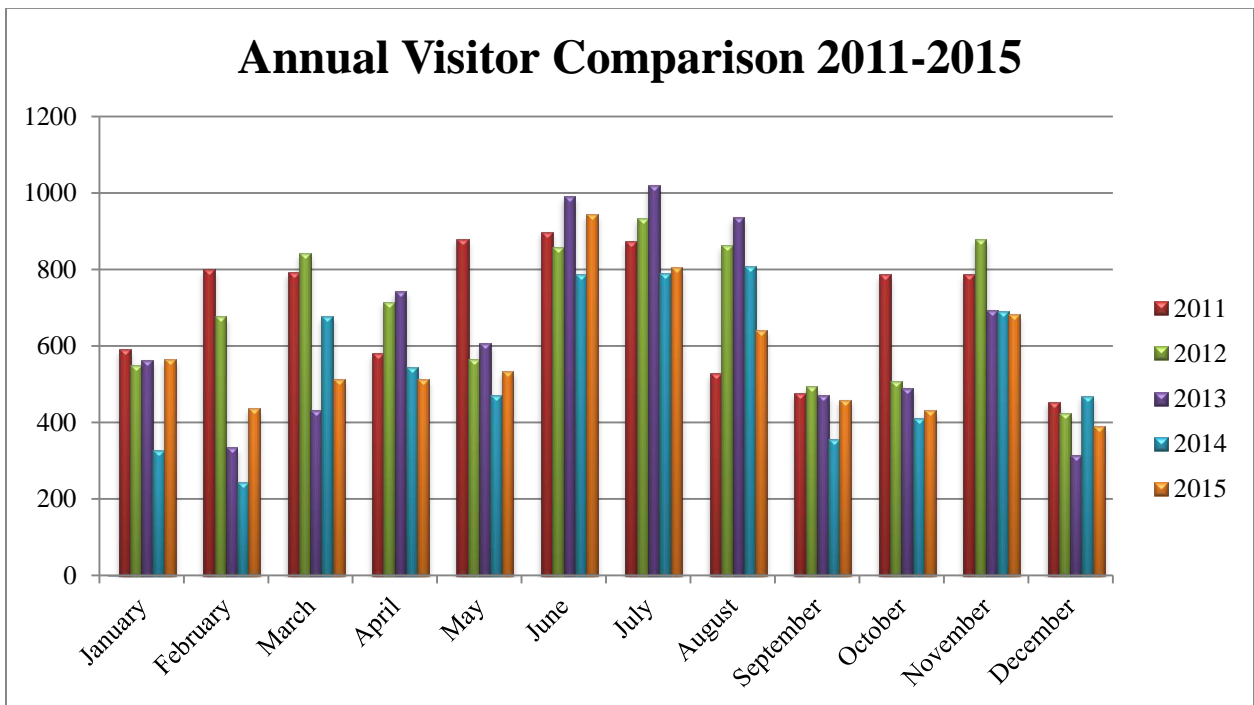
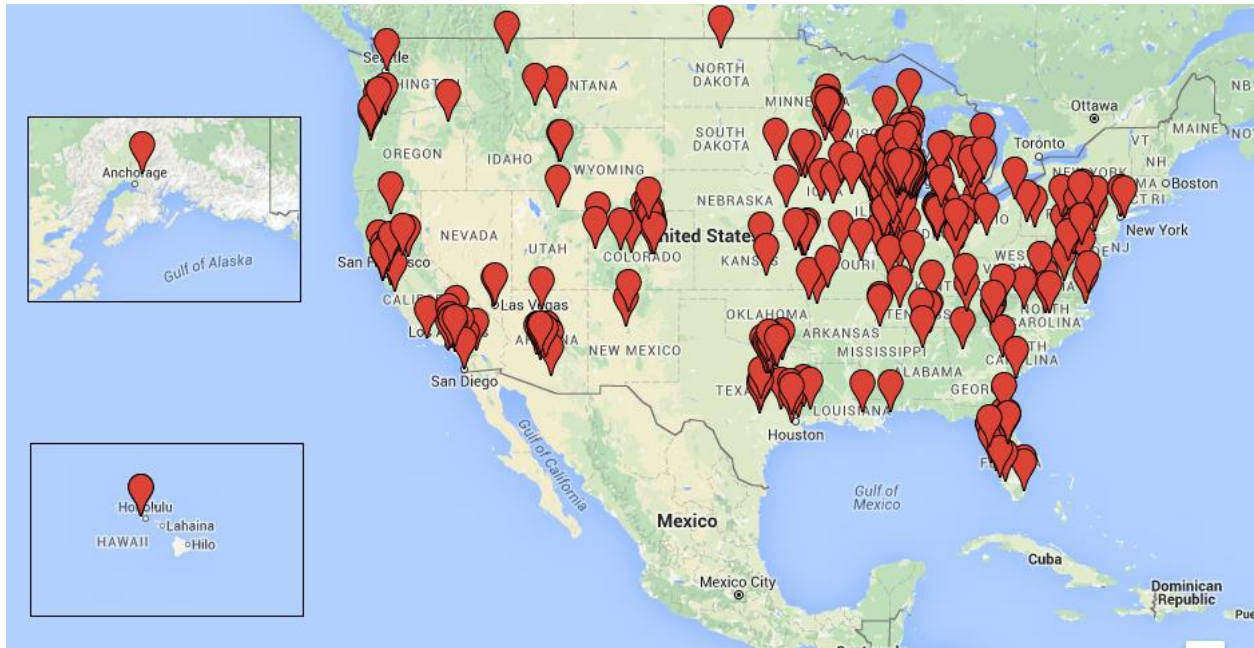
2015 Visitor Percentage



The above graph shows the percentage of visitors from cities in DuPage County, the state of Illinois, other states and countries during 2015.

Visitors Across the United States

In 2015, the Museum had visitors from 40 states as shown below, as well as 21 countries.



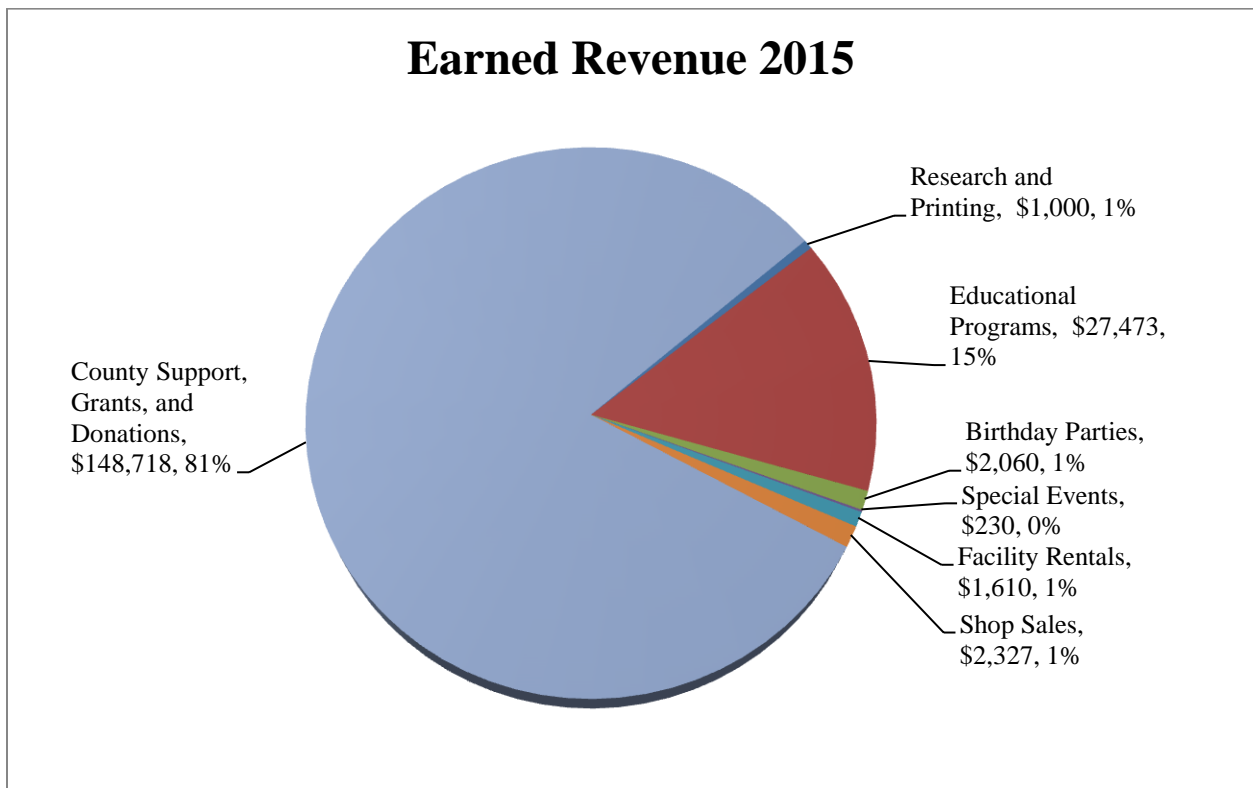
The above graph depicts visitation counts by month for 2011 – 2015. These numbers do not reflect participants in guided tours, programs, special events, or private rentals. Museum visitors increased 4% in 2015.

Financial Summary

DuPage County Historical Museum continues to focus on earned revenue opportunities. In 2015, increases were seen in Educational Programs, Facility Rentals, and Shop Sales. The Museum continued to offer the very popular LEGO®, Train, and Dinosaur Camps.

The County of DuPage owns the Museum building and the artifact collection. The County contributes a portion of the Museum budget in the sum of \$130,000 per fiscal year to pay for staff salaries. This amount, combined with the grants and visitor donations, accounts for 81% of the Museum operating budget. The County also contributes towards certain capital expenses and larger building maintenance projects.

In terms of expenses, significant decreases were seen in Supplies, as Museum staff strived for greater efficiency of current resources. Full Time Salaries and Training expenses were both significantly lower in 2015. Contractual expenses increased as we expanded our camp program and Santa Express event offerings.



Operating Budget Comparison*

Description	2015 Actual	2014 Actual	2013 Actual	2012 Actual
Sponsorships-Special Events	0	300.00	525.00	122.00
Ed. Programs/ Research	30,533.00	24,573.00	10,850.66	17,614.60
Special Events	230.00	698.00	430.00	0.00
Facility Rentals	1,610.00	1,545.00	5,980.00	4,600.00
Shop Sales	2,327.31	1,925.28	2,073.20	1,858.98
County Support, Grants & Donations	148,718.64	146,600.05	143,560.13	137,517.37
Revenue Sub Totals:	183,418.95	175,641.33	163,418.99	161,712.95
FT Administrative Salaries	76,986.10	89,490.98	95,715.17	93,689.01
Part Time Non Exempt	16,343.35	13,339.40	12,266.42	10,528.47
Contractual-Education & Collection	15,911.66	13,821.44	10,294.17	13,527.30
Life Insurance	174.60	135.74	115.31	113.36
Employer Health Insurance	29,899.62	23,906.48	26,702.43	25,992.31
IS and T Services	6,665.56	5,390.56	5,475.62	7,452.31
Utilities	9,151.13	8,433.60	7,320.27	5,918.77
Supplies	6,359.50	15,480.49	14,537.48	10,726.87
IS and T Supplies	2,884.70	2,049.63	1,344.51	2,245.85
Marketing	2,949.60	2,362.04	2,428.53	2,581.09
Fundraising Expenses	180.50	224.40	0	0
Mileage Travel Reimbursement	538.48	101.46	1,236.40	1,205.62
Dues and Subscriptions	535.00	626.33	739.00	738.30
Training	1,108.76	2,430.20	718.50	324.50
Capital Expense-Computers	0	419.91	173.08	781.16
Expense Sub Totals:	\$169,688.56	\$178,212.66	\$179,066.89	\$175,824.92
Revenue Totals:	\$183,418.95	\$175,641.33	\$163,418.99	\$161,712.95
Net Totals:	\$13,730.39	(\$2,571.33)	(\$15,647.90)	(\$14,111.97)

*All 2015 calculations are preliminary and will be confirmed through a professional annual audit.



Chris Vallillo performing Abraham Lincoln in Song, May 15. Image by Museum Staff.

Educational Revenue

\$27,473

Educational Reach

2,049

31 Events

36 Tours/Programs

11 Birthdays

6 Camps

=

84 Total Offerings

Museum Events	Events	Attendees
Adult Events	18	626
Family & Children's Events	13	715
Total	31	1,341

Education

The Museum provides events, programs, tours, and presentations to audiences of all ages. These events explore people, places, and events that shaped DuPage County.

Total educational revenue in 2015 was \$27,473.00 which was an increase of 18% from last year (2014: \$23,270.90). Staff utilized the final portion of a DuPage Foundation grant to fund the *Inheriting DuPage* lecture and event series. The total expense for all events and programs was \$12,884.41. The profit margin for educational programs was 53%.

Museum Events

The Museum held 31 events in 2015 (Appendix 1). The Museum Manager & Educator facilitated several programs to reduce expenses. The Museum also collaborated with local organizations, including College of DuPage, DuPage County Historical Society, the Forest Preserve District of DuPage County, and the DuPage County Genealogical Society to provide engaging events at little or no cost to the public. Total fees for presenters in 2015 were \$2,345, with \$2,000 reimbursed from the DuPage Foundation grant and ALA Lincoln grants.

Santa Express

The Museum hosted five Santa Express trips in December. Staff organized the trip from Wheaton to the "North Pole." Children in pajamas enjoyed milk and cookies, while staff sang carols and read stories. Santa made a special appearance and visited with each family. This program netted a profit of \$6,827.53 (compared to 2014: \$5,933). Combined enrollment for the five trips was 562.



Santa Express, 2015. Photo by Museum Staff.

Birthday Parties

Birthday parties are priced at \$150 for 10 children with additional children costing \$5 each. In 2015, 11 birthday parties were held at the Museum (seven held in 2014), with total revenue \$2,060. Expenses totaled \$355.54, making the profit margin 83%.

Presentations

In 2015, Museum staff presented at five events. This new program allows outside organizations to hire Museum professionals for educational presentations about DuPage County. Presentations brought in \$550 in 2015.

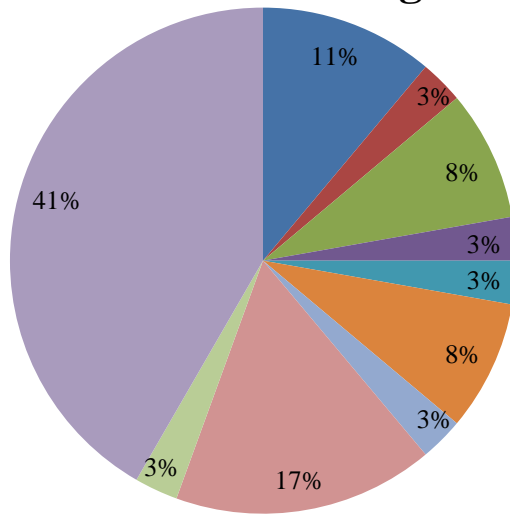
Camps

DCHM offers two types of camps—LEGO camps facilitated by an outside contractor and camps facilitated by staff. In 2015, the Museum offered seven camps with 92 attendees. Camps netted \$5,396, a profit margin of 37%.

Guided Tours, School, and Scout Programs

Basic guided tours include the building’s history and an overview of the changing exhibits. The Museum also offers various programs for school and scout groups. There were 36 tours and programs conducted in 2015. The listing of 2015 tour groups can be found in Appendix 1.

Group Locations of Tours & School/Scout Programs



- Surrounding Counties
- Downers Grove
- Glen Ellyn
- Naperville
- West Chicago
- Carol Stream
- Elmhurst
- Lisle
- Unknown
- Wheaton

Camp	Attendees
Super Hero LEGO	10
Train	8
Mine Craft LEGO	28
Dinosaur	9
Jedi LEGO	37
Total	92



Curious George visiting Train Camp. Image by Museum Staff.



Dinosaur Detectives Camp. Image by Museum Staff.

Year	Number of Tours and Programs	Attendees
2012	72	1,038
2013	41	633
2014	21	383
2015	36	616



Collection piece. Image by Larry Kmiecik.

Accessioned Artifacts in 2015: 1,040

Research Revenue

2012	\$275
2013	\$603
2014	\$232
2015	\$1,000

Research Requests

2012	91
2013	85
2014	72
2015	88



Inheriting DuPage exhibit. Image by WPD Staff.

Collection

Collection Status

The Museum cares for over 20,000 three-dimensional objects and 165 linear feet of photographs, letters, newspapers, scrapbooks, maps, and other primary sources of archives.

In 2015, staff digitized information for over 36,000 items into the PastPerfect museum software and began photographing the 3D artifacts. The digitization process allows for better efficiency in locating artifacts for research, exhibit, and loan purposes; and is critical for continued expansion of the Museum's collections. This process continues in 2016 as more detailed information is added to the database.

The Curator began a complete inventory of the collection. This process needs to be completed every ten years according to the American Alliance of Museum's (AAM) Standards.

Also in 2015, DuPage County Historical Museum focused on cataloging and accessioning pending donations and continued the temporary hold on all new potential donations. The Museum processed more than 70 individual donations and acquired over 3,000 artifacts for the permanent, research, and education collections. In January 2016, the Museum removed the temporary hold on incoming donations as staff processed most of the pending donations.

Museum staff continues processing the Patricia Torode Vaillancourt Woodstrup Collection, the largest single donation the Museum has received to date. Approximately 40% of the approximately 5,000 piece collection has been processed and digitization of the artifacts began in 2015.

Museum Research

The Museum assists students, organizations, historians, museums, and the general public with research of DuPage County history. County residents are offered a half hour of complimentary research. After the initial 30 minutes, patrons are given an update on the information found. If more research is necessary the Museum charges a fee of \$25 per hour. This is comparable to local museums.

In 2015, the Museum received 88 research requests, which was an increase of 22% compared to 2014. Topics for research requests included the Jesse Wheaton house, any leads on the last Civil War veteran buried in DuPage County, as well as the Potawatomi held at Churchill Woods in 1830 before their removal west of the Mississippi.

Exhibits

The Curator created an exhibit schedule for changing exhibits through 2022. The schedule includes three exhibit spaces with up to four new exhibits per year. A fourth exhibit space in the Auditorium will be utilized as needed.

Permanent Exhibits

The Museum brainstormed ideas for the permanent exhibit renovation. Plans are being drawn and discussions will begin soon on developing a timeline with all parties involved. Work on this exhibit is expected to begin in the next five years.

Changing Exhibits

The award-winning exhibit, *Inheriting DuPage: A Family History*, celebrating the County's 175th anniversary, was on display through September 2015. The exhibit featured nearly 200 artifacts from the 5,000 piece, Patricia Torode Vaillancourt Woodstrup Collection.

In October 2015, the Museum opened *Wedding Traditions Unveiled*, which charts the history of courtship rituals and wedding traditions from the Victorian Era through the 1950s. The exhibit focuses on artifacts from DuPage County while showing the origin of traditions and how they have evolved over time.

Institutional Stewardship: Accreditation

DCHM continues to work towards accreditation, utilizing the American Association of State and Local History StEPs program to identify and correct challenges. See Appendix 2 for current accreditation requirements. Staff has identified several tasks to prepare for accreditation listed below; the Museum expects to apply for accreditation within five years.

- Repair the building's outdated roof (completed Spring 2016)
- Update Museum policies including building a new Business Plan and Strategic Plan (in progress)
- Establish a timeline and fundraising plan for updating the Museum's permanent exhibit
- Complete an inventory of the Museum's existing collections (in progress)
- Digitize the Museum's collection (in progress)
- Completion of StEPs program, a voluntary training program for accreditation (in progress)

Museums Accredited in Illinois¹

County	Number of Accredited Museums
Cook	16
DuPage	2
Lake	1
McLean	1
Peoria	1
Springfield	4
Champaign	3
Coles	1
Jackson	1
Total	30

Budget for Museums Accredited by the AAM¹

Annual Budget	% of Accredited Museum
\$350,000 and under	8%
\$350,000 to \$499,999	6%
\$500,000 to \$999,999	18%
\$1,000,000 to \$2.9M	30%
\$3M to \$4.9M	12%
\$5M to \$14.9M	17%
\$15M and over	10%

Only 1,033 of 35,000 museums nation-wide are accredited.

¹ Naper Settlement and the Morton Arboretum are the only museums from DuPage County that are accredited as of the most recent statistics in March 2014.



Museum Rental for Private Event. Image by Museum Staff.

**Total Rental
Revenue 2015:
\$1,610.00**

The following organizations were hosted at the Museum through rentals or partnered events in 2015:

Organization	Attendees
Reindeer Run*	1,200
DuPage County Historical Society	27
Keffer Financial Planning	58
Wheaton Lions Club*	60
Outreach Community Ministries*	50
Total	1,395

*Denotes estimated numbers



Intern Brian Failing presenting Postcard History, March 21. Image by Museum Staff

Facility Rentals

In 2015, the Museum acted as host to various organizations and individual events throughout the community. The Museum utilized a number of sources to increase awareness of facility rentals including:

- Museum website
- Wheaton Park District website
- Wheaton Park District rental brochure
- DuPage County Historical Museum rack card
- Rental specific websites
- Social media
- Downtown Wheaton light pole banner

The Museum Auditorium houses many of our programs, school and Scout visits, and birthday parties. It provides meeting space for programs and events within the Wheaton Park District including bid openings, committee meetings, special facility department meetings, marketing and development meetings, special events planning meetings, finance meetings, Foundation meetings, staff meetings, and more. The space is also utilized by our partner organization, the DuPage Historical Museum Guild. In 2015, the Museum Auditorium hosted 40 meetings related to district activity.



Volunteer Appreciation Dinner. Image by Museum Staff.

Grants*

- In February, the Museum received an award from the Illinois Humanities Council Road Scholar Speakers Bureau to cover speaker's fees for Brian Fox Ellis' *Lincoln's Walt Whitman* event in May. Paying Mr. Ellis directly, the award saved the Museum \$700-\$1,000.
- Intern Brian Failing, received the Graduate School Research/Creativity Award from the Council on Graduate Studies of Eastern Illinois University for his research *Postcards of DuPage County: A Digital Collection of the Past*. A grant of \$700 assisted with research costs and purchased PastPerfect Online for the Museum.
- In November, DCHM received \$2,500 from the DuPage Foundation's Community Needs Grant: Cleve E. Carney Fund to support the *Fun Unplugged* exhibit in 2016.
- Also in November 2015, the Museum received a \$1,000 operations grant from the History DuPage Fund of the DuPage Foundation and the Shebik Family, for 2016.
- In December, the Museum received an unrestricted grant for \$5,500 from the Conrad and Doris Brassine Charitable Fund of the DuPage Foundation in 2016.
- Robert McCormick Foundation invited DCHM to participate in the "Community Trees" Program at Cantigny Park. The Museum received \$2,500 for participating in the program.
- In October, a generous donor Daniel Goodwin of Inland Real Estate donated \$200,000 to help pay for a new roof for the Museum building.

Awards

- The Museum applied for the highly competitive AASLH Leadership in History Award for the *Inheriting DuPage: A Family History* exhibit. While the Museum was not chosen as the winner, the Museum was a National Finalist, which is a significant achievement. Only one Museum from the state of Illinois was awarded this year.
- The Illinois Association of Museums (IAM) awarded the Museum with two awards this year: An Award of Excellence for the *Inheriting DuPage: A Family History* exhibit, calling it "A unique way to experience, learn and celebrate the 175th anniversary of the founding of DuPage County." The Museum volunteer organization: the DuPage Society of Model Engineers was also recognized with a Gold Award for 50 years of service to the Museum. Two members have served with the group since the train moved into the Museum in 1965.

*See Appendix 3.



Curator Ashley Downing accepting the DuPage Foundation Community Needs Grant. Image by DuPage Foundation.



DCHM's "12 Decades of Christmas" community tree at McCormick Mansion. Image by Museum Staff.

**2015 Grants
Awarded for:
2015: \$4,200
2016: \$9,000**



Manager & Educator Michelle Podkova accepting the IAM awards. Image by IAM.



Museum Guild members. Image by WPD Staff.

2015 Hours
Museum Guild-700

DPSME-460

Volunteers-772

Interns-1,245.5

Total Hours
3,177.5

Total Value
\$78,611.35



DPSME member John Nolan. Image by Museum Staff.

*Volunteer calculations estimated using the Bureau of Labor Statistics data, indexed by Independent Sector of \$24.74/hour.
[http://independentsector.org/volunteer_time#sthash ZYNKe0Y dnbs](http://independentsector.org/volunteer_time#sthash>ZYNKe0Ydnbs)

Personnel

Wheaton Park District Administration

The Museum building also functions as the Administrative Office for Wheaton Park District. Museum Assistants serve in an administrative capacity, processing registrations, ticket sales, and citizen concerns for the District. Staff also processes registrations for Special Facility events such as Taste of Wheaton, Fourth of July Parade, Brew Fest, and others. Staff assists the District in many capacities.

Staff Development

All staff is CPR/AED certified through the Park District Safety Manager. Staff also takes yearly online training through Wheaton Park District's insurance company. The Museum continued their partnership with Giant Steps for yearly Autism-friendly certification trainings. The Museum Curator attended the Campbell Center for two classes: training on label writing and archival collections care. The Museum Manager and Educator attended the Illinois Association of Museum's Annual Conference.

Interns

The Museum hosts interns regularly. Each intern completes 210 hours and earns credit towards a degree (Appendix 4).

Brian Failing researched and digitized the Museum's postcard collection for an online exhibition. Brian also drafted a docent manual and edited the volunteer manual.

Colleen Filipek accessioned, cataloged, and photographed artifacts. She inventoried balcony and auditorium storage and researched *Wedding Traditions Unveiled*.

Andrea Martinez began her internship in 2014, and finished in spring 2015. Andrea helped the Museum catalog an anonymous collection and facilitate educational programs.

Debra Smetana translated French letters and worked on accessioning artifacts into the collection.

Dan Will accessioned and rehoused artifacts, inventoried stage storage, created condition reports for *Wedding Traditions Unveiled*, and researched for *From Flame to Fluorescent*. Dan also assisted with educational programs.

Amelia Winston redesigned the Girl and Boy Scout programs to work towards badges. She also helped with educational programming, field trips, tours, birthday parties, and events.

Volunteers

Volunteers work in the areas of collections management, archival research, exhibit development, visitor services, educational programming, special events, and marketing. The volunteers provide the Museum with invaluable services and tremendous dedication. The Museum's volunteers contributed more than 772 hours of service in 2015.

The Museum's two volunteer organizations, the Museum Guild and the DuPage Society of Model Engineers (DPSME), have offered the Museum support for 32 and 50 years respectively. The Guild, founded in 1983, raises money for the Museum each year at the Holiday Bazaar. Each year they sponsor a project or two with their yearly donation.

DPSME partnered with the Museum in 1965. Members installed and maintain the HO model railroad, generously running it for families on select Saturdays. DPSME was honored by the IAM for its 50th anniversary.

What Our Stakeholders Say...

"Ashley and Michelle have been huge mentors to me this past year. Their passion for telling our county's history shows in all they do. I am glad to have been part of their team." ~Brian Failing, Intern

"Quiet morning [at DCHM]! My boys loved the model trains and interactive play room." ~Rachel Clare, Visitor

"Thank you for the informative tour of the "Inheriting DuPage" exhibit that you led for our P.E.O. group...I received many positive comments from the rest of the group, who found the tour very interesting." ~Carole Zoeller, Visitor

"It's [the Museum] so incredible. We knew this museum was where we wanted it [their family collection]." ~Wendi Woodstrup, Collection Donor

"Thank you for your kindness to my grandson, Jonas, and myself when we visited the Museum...Jonas went home and told his mom and dad about seeing the Union flags, uniforms and trains." ~Glenn Rowe, Visitor

"The DCHM is both a fun and rewarding place to volunteer. Over the years, the staff, interns, and other volunteers have been wonderful to work with. Volunteering at the museum has given me a greater understanding and appreciation for the history of DuPage County." ~Emily McCafferty, Volunteer

DCHM would like to thank all of our wonderful 2015 volunteers for their dedication to the Museum:

Forest Andrews
Norman Brockmeier
Melody Coleman
Louise Coutre
Brian Failing
Colleen Filipek
Grace Gathman
Peggy Goddeau
Roberta Goehmann
Irina Gorbunova-Ford
Jean Gieraltowski
Jerry Gieraltowski
Barbara Graves
Carol Hagemann
Matthias Joireman
John Kelly
Larry Kmiecik
Andrea Martinez
Emily McCafferty
Karen McCulloch
Nancy Morris
Jackie Niemeyer
John Nolan
Cheryl Nurse
Craig Passley
Liz Robertson
Tom Schneider
Ashley Serwas
Ruth Sjostrand
Debra Smetana
Clare Sokolowski
Rose Mary Stelter
William Stroner
Eileen Trescott
Mary Udelhofen
Ken Valentine
Joseph Ward
Keith Ward
Jennifer Warner
Brandon West
Dan Will
Karin Wulf-Jaeger



ALA traveling exhibit *Lincoln: The Constitution and The Civil War* at DCHM. Image by WPD Staff.

dupagemuseum.org
16,000 visitors

Facebook
651 Likes

Twitter
404 Followers



Marketing

Public awareness of the DuPage County Historical Museum increased in 2015. Marketing focused its efforts on distributing regular e-newsletters, displaying signage and posters around town, keeping the website up to date, promoting current and upcoming exhibits and events through the Wheaton Park District (WPD) program guide and website, and by posting relevant and engaging information on the Museum’s Facebook page. A complete marketing collage and feature articles are available in Appendix 5.

In 2015, the Museum hosted two temporary exhibits—*Lincoln: The Constitution and The Civil War* and *Wedding Traditions Unveiled*. Both exhibits featured unique workshops and programs and opportunities for the public involvement. WDCB Radio interviewed Museum staff for both of these exhibits in 2015.

Wedding Traditions Unveiled invited local couples to share their wedding photos. More than 30 couples participated and the Museum showcased the photos in the auditorium for the duration of the exhibit. Both exhibits were announced to local media through press releases and several print and online media outlets reprinted the information for their readers.

The Museum also served as a host site for the *Lincoln Marsh: The Knowable Mystery* art exhibit project during the month of June. As a host site, DCHM displayed one of the paintings and featured the catalogues in the gift shop. Twelve books were sold with the proceeds going to the Lincoln Marsh.

Focus on advertising for seasonal and annual events included summer camps, scout/school programs, train Saturdays, rentals and the new Explorers Club kids membership program.

The Museum continues to participate in WPD events which include Taste of Wheaton, Shakespeare in the Park, Week of the Young Child, Summer Camp Open House, Create Discover Play Day, Brewfest, and the Reindeer Run.

Marketing focuses on press releases, feature articles, print advertisements, e-marketing, exhibit logo creation, social media and digital marketing. Digital marketing included advertisements on targeted websites such as familytimemagazine.com, wheatonpatch.com, oakleesguide.com, and chicagofun.com, which link directly back to the Museum website.

The marketing and development staff collaborate on a regular basis to identify and seek potential sponsors for various Museum and Foundation events. Those sponsors have provided monetary support and/or product donations for events such as the Santa Express Train, Casino Night, and *Wedding Traditions Unveiled*.

The Museum website, dupagemuseum.org, continues to see an increase in visitors. In 2015, more than 16,000 people visited the website which is an increase of 5% from 2014. The following pages showed the most growth in 2015: membership, birthdays, appeal, foundation, rentals, and the Museum Guild.

Social Media

Museum and marketing staff cooperatively maintain Facebook and Twitter accounts. Both social media platforms are updated several times per week. Posts focus on programs, exhibits, and events at the Museum, as well as historical topics, facility closures, and other important information.

In 2015, the Museum and Foundation boosted two posts on Facebook. This advertising feature will be explored in 2016 to market special events. An additional emphasis to engage page visitors in discussions and encourage them to ask questions and leave comments will be further developed. The charts below describe statistics from the Museum’s Facebook and Twitter accounts.



In 2015, the Museum participated in the #ThisPlaceMatters Selfie Challenge on social media. Image by Museum Staff.

Facebook

Year	Posts	Total “Likes”	Average Views/ Post	Highest # to see a post
2012	84	213	48	297
2013	94	329	63	378
2014	221	471	243†	11,636†
2015	341	651	114†	2,891†

† This data includes “Boosted” posts. This feature “boosts” a post to the top of followers’ News Feed, making it more likely that followers will view the post.

Twitter

Year	Total “Tweets” (Posts)	Total Followers
2012	130	80
2013	100	195
2014	34	278
2015	150	404



Casino Night. Image by WPD Staff.



Shakespeare in the Park play *A Midsummer Night's Dream*. Image by WPD Staff.

2015 Foundation

Scott Shorney, President

Mike Benard, Secretary

Amy Grant, Treasurer

Mike Fortner

Bob Jacobsen

Susan Janowiak

Don Puchalski

David Thiel



On Par for DuPage Golf Outing. Image by WPD Staff.

DuPage County Historical Museum Foundation

DuPage County Historical Museum Foundation is a 501(c)(3) recognized by the State of Illinois. The Foundation's primary function is to raise funds to support the Museum's mission of educating the general public through the collection, preservation, interpretation, and exhibition of materials which document the history of DuPage County and its relationship to Illinois and the nation, and to provide local history services for historical organizations and scholarly endeavors. The foundation meets once a month at the Museum to strategize and set goals for the future.

The Foundation works closely with the Development Director, Museum staff, and Park District staff, with the goal to solicit corporate and individual donations and coordinate fundraising events. These initiatives include:

Casino Night takes place at the Museum in March each year, and boasts approximately 150 guests. This event typically raises \$10,000 or more per year.

Shakespeare in the Park is a partnership event with Wheaton College Arena Theater at Memorial Park during the month of August. The Museum is the named beneficiary of the event proceeds. In 2015, the Theater performed *A Midsummer Night's Dream*.

On Par for DuPage Golf Outing is held at Arrowhead Golf Club. It features an Oktoberfest theme in October every year. The Museum partners with People's Resource Center and generates close to \$20,000 each year.

The **Annual Membership Program** offers unique benefits such as discounts on research requests, programs, and events. The Foundation continues to grow its adult and children membership numbers. New in 2015, the Explorers Club, a membership for kids, provides access to a members-only event each year and a private viewing on specific train Saturdays.

Each November, the Museum designs an **end of year appeal** message to reach thousands of individuals. In 2015, the Museum received \$3,255.

In 2015, the Museum was the recipient of a \$200,000 corporate donation for the roof replacement. The construction began in 2015 and expected to be complete in early 2016.

DCHM Foundation Budget Comparison*

DCHM Foundation raised an estimated \$286,278.63 with net revenue of \$224,160.24 in 2015.

Description	2015 Actual	2014 Actual	2013 Actual	2012 Actual
Special Events	0	0	3,339.00	0
Music and Lecture	n/a	n/a	1,108.00	2,316.00
CSADA	n/a	5,433.00	6,529.00	6,405.00
On Par for DuPage Golf	40,133.13**	39,756.25**	43,464.00**	n/a
Hope & History	n/a	34,675.00	n/a	n/a
Casino Night	11,174.20	14,126.59	11,623.05	10,740.00
Annual Appeal	3,255.00	4,540.00	3,930.00	4,315.00.00
Sponsorships-Special Events	625.00	175.00	12,000.00	0
Gift Shop Sales	25.00	100.00	4,309.80	0
Grants and Donations	226,062.04+	34,248.55	15,850.88	772.76
Auction/Raffle proceeds	4,370.00	0	1,555.00	1,897.19
Foundation Memberships	529.62	486.21	712.39	866.37
Miscellaneous Income	104.64	0	0	0
Revenue Sub Totals:	\$286,278.63	\$133,540.60	\$104,421.12	\$29,812.32
Music and Lecture	n/a	162.50	3,385.61	2,944.70
CSADA	n/a	1,890.11	1,624.35	1,302.00
On Par for DuPage Golf	0	0	10,514.60	n/a
Hope & History	n/a	28,165.49	n/a	n/a
Casino Night	4,972.36	7,262.60	2,789.41	3,693.32
Annual Appeal	0	1,456.82	1,942.85	3,070.89
Contractual-Other	9,922.61	9,181.20	269.00	26,451.29
Salary Reimbursement	22,455.36	35,134.77	29,130.24	19,923.17
Credit Card Processing Fees	294.44	881.53	733.26	205.98
Entertainment	600.00	600.00	600.00	0
Printing	1,852.72	2,897.42	1,794.67	0
Supplies	3,115.33	11,672.10	9,401.60	6,285.18
Board Expenses	15.82	87.39	1,712.57	560.75
Fundraising Expenses	180.00	0	0	1,500.00
Operating Donations Made	11,901.05	15,703.23	12,372.77	0
Capital Donation to WPD	0	5,000.00	0	0
Audit	2,625.00	2,500.00	0	0
Dues and Subscriptions	25.00	375.00	125.00	25.00
Advertising and Publicity	0	445.00	716.23	55.00
Postage	983.78	884.69	2,472.59	0
Membership	0	0	0	0
In-Kind Services	2,725.00	3,175.00	0	0
Prizes and Giveaways	449.92	617.39	0	0
Expense Sub Totals:	\$62,118.39	\$128,092.24	\$79,584.75	\$63,321.45
Fund Revenue Sub Totals:	\$286,278.63	\$133,540.60	\$106,798.07	\$29,812.32
Report Totals:	\$224,160.24	\$5,448.36	\$24,836.37	(\$33,509.13)

**Indicates the inclusion of revenues collected directly by PRC for event.

+Includes Inland's \$200,000 donation for the roof project. Project will be paid for in 2016 fiscal year.

*All 2015 calculations are preliminary and will be confirmed through a professional annual audit.

Appendix

Appendix 1: Education

Educational Tour and Program Groups

Group/Organization	Type	Program	Location
Timothy Christian High School	School	Tour of "Inheriting DuPage"	Elmhurst
Belmont Villages	Adult	Tour of "Inheriting DuPage"	Carol Stream
Classical Conversations	School	Living History: Butter and Seeds	Wheaton
Atria Senior Living	Adult	Tour of "Inheriting DuPage"	Glen Ellyn
Wolf Cub Scouts	Scout	Museum Detectives & Tour	Wheaton
Daisy Girl Scouts	Scouts	Daisy Tea Party	Lisle
Boy Scout Troup 73	Scouts	Tour	Wheaton
The Montessori School	School	Living History: Butter & Quilts	Englewood
Girl Scouts	Scout	Daisy and the Girl Scouts	Wheaton
Philanthropic Education Organization	Adult	Tour of "Inheriting DuPage" Exhibit	Downers Grove
Private Tour	Adult	Tour	Downers Grove
Junior Girl Scouts	Scout	G.S. Traditions & Badges Through the Years	
Windy City Miata Car Club	Adult	Tour	Lisle
Cub Scout Den 4 Whittier Elementary	Scout	Tour	Wheaton
Junior Girl Scouts	Scout	Social Butterfly Tea Party	
Scouts	Scout	Tour	
Tiger Cubs, Pack 335	Scouts	Local History Program & Tour	Wheaton
Kensington School	School	Living History: Seeds	Wheaton
Washington School	School	Tour	Wheaton
Lincoln Elementary Exploremore Day	School	Living History: Calligraphy & Seeds	Wheaton
Cantigny Foundation	Adult	Tour	Wheaton
Girl Scout Program	Scout	Daisy & the Girl Scouts, G.S. Celebration	Downers Grove
The Muff Family	Family	Architectural Walking Tour	
Brookdale Assisted Living	Adult	Tour of "Inheriting DuPage"	Lisle
Islamic Center of Wheaton	Camp	Timeless Toys, Scavenger Hunt, Walking Tour	Wheaton
WAYS Field Trip	Camp	Tour & DPSME Presentation	West Chicago
Tabor Hills Supported Living	Adult	Tour	Naperville
Red Oak Nature Center	Adult	Tour	Batavia
Brownies	Scout	Girl Scout Celebration	Wheaton
Wheaton Women's Department Club	Adult	Tour of "Wedding Traditions Unveiled"	Wheaton
Brownies Girl Scouts	Scout	Girl Scout Celebration	Wheaton
St Jude School Joliet	School	Harvest Day: Calligraphy	Joliet
Wheaton College	School	Drawing Class	Wheaton
Family Tour	Family	Tour and Architectural Walking Tour	
LEAF Homeschool Group	School	Living History: Tin Punching	Aurora
High school students	Students	Tour	
Museum Guild	Adult	Tour	
Family Tour	Family	Tour	

Educational Programming 2015

- 33rd Annual Guild Bazaar
- Abraham Lincoln in Song
- Chicago Suburban Preservation Alliance meeting with Wheaton Historic Commission
- Civil War Detectives Workshop
- Eastland Disaster with DuPage County Genealogical Society
- Fischer Farm Tour with Bensenville Park District
- Fullersburg Woods Tour with the Forest Preserve District of DuPage County
- Golden Age of Radio with DuPage County Historical Society
- Inside "Inheriting DuPage" Exhibit
- Landscape Workshop
- McDowell Woods Hike with Forest Preserve of DuPage County
- Pearls and Cuffs: Making Wedding Accessories Workshop
- Postcard History Lecture
- Prairie Tour (2) with College of DuPage
- Preservation Week Architectural Walking Tour
- Preserving Your Family History with College of DuPage
- Santa Express (5)
- Victorian Craft Day
- Victorian Valentines (2)
- Walt Whitman's Lincoln
- Week of the Young Child: Museum Explorers
- Wheaton Wedding Walk with Downtown Wheaton Association

Appendix 2: Accreditation

A Guide to the First-Time Accreditation Process

After several years of listening to the field through surveys, interviews, and convenings, a new, streamlined *first-time accreditation process* has been created.

- Through a combination of policy, process, and technology changes, the time needed to complete an accreditation review has been reduced by 50% or more.
- More emphasis is being put on institutional impact and less on process/policy.
- The Self-Study has gone paperless.

However, there has been no dilution of the standards, and the core architecture of a Self-Study, a site visit by peers, and review by the Accreditation Commission remains.

Application

- The online application is short and collects enough information to help the Alliance staff determine if the museum is eligible and ready for accreditation.
- There is no application fee.
- Before the museum can apply, it must have taken the Pledge of Excellence and successfully completed the Core Documents Verification Program.

The Self-Study

- Is comprised of the following sections and is completed entirely online:
 - **Organizational Data** – Simple demographic questions, such as museum type, governance, budget, and staff size.
 - **Museum Overview** – Questions that gather more detailed information about the museum's mission, collections, and other certifications; and special questions if the museum is (or part of) a museum system.
 - **Operational Data** – Questions that gather detailed data on finances, facilities, human resources, attendance, and types of collections.
 - **Educational Role** – Questions about how interpretive content is developed, and how the museum carries out its educational role, does research, and evaluates impact and success.
 - **Public Service Role** – Questions about what the museum knows (and how) about the people it serves, and how it reflects/serves its community and audiences.
 - **Collections Stewardship Role** – Questions cover all areas of collections management, including accessioning/deaccessioning and loan practices, environmental conditions and controls, accountability measures, documentation, insurance, and conservation/preservation.
 - **Planning** – Questions address the museum's near-term planning processes and its preparedness for the long-term future, and how it defines and measures success
 - **Organizational Health** – Questions on governance, financial stability, staff, security and emergency planning; and questions that show the museum operates in an accountable and transparent manner.
 - **Wrap-Up** -- An accredited museum is more than the sum of its parts. Here the museum is asked to summarize why it is important, to whom, and how it makes a difference.
 - **Attachments** – A list of documents to upload: 8 required; 2 if applicable; 4 optional.
 - **Help** – Definitions, resources, information on standards, and guidance on how to answer selected questions.
- A review fee, based on the museum's Alliance membership status, is due at the time of submission. Tier 3 Members receive a significant discount.

Appendix 2: Accreditation

The Site Visit

- Site visits will happen only during three periods of the year, and will be pre-assigned based on your museum’s Self-Study due date (see the chart below).
- With this approach you will know far in advance the six-week window when your site visit will occur so you can plan accordingly. You will work with your peer reviewers to set the exact dates of the 2-3 day site visit.
- You will have the chance to vet a list of potential peer reviewers; the Alliance staff will select both team members.

Schedule

Applications Reviewed	Begin Self-Study	Self-Study Due	Site Visit	Commission Review
June	July	January	July 15 - Aug 30	October
October	November	May	Nov 1 - Dec 15	February
February	March	September	March 1 – April 15	June

- The time from the Self-Study’s submission to the Commission’s decision will be about 11-16 months, barring any issues you need to remedy during the process. (See below for a detailed timeline.)
- Once accredited, accredited status will expire in ten years. Exceptions to this are:
 - In select cases the Commission may designate a shorter award period due to concerns.
 - Requests (from the museum) for extensions to the Self-Study due date or site visit period will be approved only in rare cases due to highly unusual extenuating circumstances. Any such extension time granted will be deducted from the museum’s next 10-year accreditation period.

Tips for Preparing for Accreditation

- Get informed about the process and the standards!
 - Talk to your colleagues at other accredited museums, or who do accreditation site visits, about their experiences with accreditation
 - Review information on the Alliance website
 - Review the eligibility criteria to determine if your museum can participate
 - Review the Characteristics of Excellence online
 - Read the publication, “National Standards and Best Practices for U.S. Museums”...and share it with the staff and governing authority
- Take the Pledge of Excellence.
- Gain support and commitment from your staff and governing body to seek accreditation.
- Undertake some type of formal assessment to get feedback on operations (e.g., Museum Assessment Program, Conservation Assessment Program, a consultant). . . and implement the recommendations before applying for accreditation.
- Revisit your mission and assess if it still accurately aligns with current operations.
- Build in accreditation preparation steps into your institutional plan.
- Allocate time, resources, capacity (human and financial) you will need to support the accreditation process. Build this into the strategic plan.
- Self-assess, and develop or improve, as needed, your Core Documents using online Alliance Resource Guides. Then apply for Core Documents Verification—successful completion of this program is a pre-requisite for applying for accreditation.
- Review the list of Self-Study attachments to determine what other documents your museum is missing and if any need to be developed or updated.

Appendix 2: Accreditation

Accreditation Timeline

PRE-REQUISITE: TAKE THE PLEDGE OF EXCELLENCE	Click a box or send an email	
PRE-REQUISITE: COMPLETE CORE DOCUMENTS VERIFICATION	2 months for Alliance review once all documents submitted*	
THE ACCREDITATION PROCESS	TIME for this phase (months)	CUMULATIVE TIME for the review* (months)
APPLICATION <ul style="list-style-type: none"> Once all Core Documents are verified, Museum submits application online. Application reviewed. If accepted, the online Self-Study link is shared and a due date is assigned (6 months). 	2 (weeks)	2 (weeks)
SELF-STUDY <ul style="list-style-type: none"> Museum spends up to 6 months completing online questionnaire and uploading documents. Museum submits all materials by assigned due date. Alliance staff does thorough review of materials for completeness. In 1 month, museum receives review results (Self- Study Review Checklist). Museum responds to any requests for clarification or information, and/or submits any missing documents within 1 month. Program staff determine whether or not the museum is ready for a site visit. 	8	8 ½
SITE VISIT <ul style="list-style-type: none"> Process begins when museum submits Self-Study (Site Visit and Self-Study phases run concurrent for two months). Museum receives list of potential Peer Reviewers to approve; museum returns list within 1 week. Accreditation Program staff makes requests to two of the approved individuals to serve as the site visit team (the Visiting Committee). The Visiting Committee coordinates with museum to set visit date within the pre-assigned six-week window. Museum prepares for site visit. Visit occurs. Visiting Committee writes and submits report to Accreditation Commission. Museum placed on pre-assigned Commission meeting agenda. 	2-4	10-12
ACCREDITATION COMMISSION REVIEW & DECISION <ul style="list-style-type: none"> Accreditation Commission reviews Self-Study and Visiting Committee report. Commission grants or denies accreditation, or tables its decision for up to 1 year so museum can address specific concerns. Museum receives decision letter and a copy of the Visiting Committee report. When accreditation is granted, the next Self-Study due date is stated in the decision letter. Accreditation is granted for 10 years (shorter terms of 5 years are sometimes applied instead). 	1-4	11-16

* Times given are approximate and do not factor in additional time the museum must take to remedy incomplete items throughout the process or tabling actions by the Commission at final decision stage.

IHC ROAD SCHOLARS SPEAKERS BUREAU

February 16, 2015

DuPage County Historical Museum
Michelle Podkowa
102 E Wesley St
Wheaton, IL 60187-5321

Dear Michelle:

Re: IHC Road Scholar Award #CC_CC52 / Brian (Fox) Ellis
Event Date: 5/28/2015 at 06:30 PM

It is my pleasure to inform you that the Illinois Humanities Council has agreed to award an IHC Road Scholars Speakers Bureau grant in support of the program titled *Walt Whitman's Lincoln* to the **DuPage County Historical Museum**. Please keep this letter as it will serve as a contract between **DuPage County Historical Museum** and the IHC.

IHC pays the speaker an honorarium and reimburses travel expenses associated with the program, including meals and lodging. Payment will be sent directly to the speaker, not through your organization. Again, **YOU DO NOT NEED TO PAY THE SPEAKER**. However, with this contract the **DuPage County Historical Museum** is responsible for the following:

Program Coordinator Checklist:

- Promote event w/ attached press release and calendar listing**
- Contact speaker two weeks prior to event**
- Copy and distribute Audience Surveys (2 pages!)**
- Submit Final Report w/ Audience Surveys**

1. Keep a record of time and expenses.

Save your receipts and keep track of the volunteer and staff time put into planning and promoting the event in order to help you accurately complete the final report form (enclosed).

2. Promote your event.

Attached to your award email and in this document, you will find a few documents to help you promote your event.

Appendix 3: Grants & Awards

1. A “How-To” Sheet created by our Communications Manager, Carlos Velazquez, along with templates for a press release and media calendar listing.
2. Program artwork to include in print and online materials.
3. Digital versions of the IHC logo. You must include our logo in any and all promotion.

The IHC suggests using the following statement to indicate our support:

The Illinois Humanities Council [IHC] is supported in part by the National Endowment for the Humanities (NEH) and the Illinois General Assembly [through the Illinois Arts Council, a state agency], as well as by contributions from individuals, foundations and corporations.

Any views, findings, conclusions, or recommendations expressed by speakers, program participants, or audiences do not necessarily reflect those of the NEH, the IHC, our partnering organizations or our funders

Also, the IHC should be acknowledged in the introduction of the speaker.

3. Re-confirm with your speaker.

Two weeks before your program, remember to call your *IHC Road Scholar* speaker to re-confirm the date, time and location of the program, along with any other necessary logistics. It is always helpful if you can provide your speaker with information on accommodations in the area, including hotel/lodging and restaurants. Of course, we love for our scholars to feel at home in your town. If anyone in your community is willing to host a Road Scholar in their home, we'd be very appreciative. The money we'd be saving on lodging can help fund additional events around the state.

4. Copy and distribute audience profile surveys.

Please copy and distribute the enclosed audience profile survey to all participants and audience members. Failure to submit surveys with your final report may result in denial of future programs.

5. Return surveys and final report.

After your program has taken place, complete and return the final report form to the IHC by **6/28/2015**. Failure to submit the final report and its accompanying documents by this date may result in denial of future programs.

The IHC congratulates you on the receipt of this grant and is delighted to have the opportunity to work with you in providing this public humanities program to your community.

Sincerely,



Angel Ysaguirre
Executive Director

Appendix 3: Grants & Awards



January 6, 2015

Brian Failing
Historical Administration
Eastern Illinois University

Dear Mr. Failing:

It is my pleasure to inform you that your research project titled, *Postcards of DuPage County: A Digital Collection of the Past* has been selected by the Awards Committee of the Council on Graduate Studies to receive a Fall 2014 Graduate School Research/Creative Activity Award. Congratulations on your achievement and that of your faculty mentor, Dr. Terry Barnhart. The \$700 award for the project will be transferred to your departmental account for use to support the proposed research budget. Please have someone from the department contact Lana Beasley, 581-7490 or libeasley@eiu.edu at the Graduate School for further information concerning this transfer.

Formal recognition of your achievement will occur at the Distinguished Graduate Student Awards Ceremony during Graduate Exposition week; this year's ceremony is Thursday, April 9, 2015. You will also be featured in the 2014 *Graduate Journal of Scholarship*. Lori Henderson in the Graduate School will be in touch with you to schedule a photograph at a later date. I encourage you to share your research with the EIU community during Graduate Expo week either by exhibiting a poster during the awards ceremony or scheduling a presentation during the week. Members of the Graduate Student Advisory Council and staff of the Graduate School will be contacting you regarding those opportunities.

I look forward to extending my personal congratulations the day of the ceremony and I applaud your scholarship

Sincerely,

A handwritten signature in black ink that reads "Robert M. Augustine".

Robert M. Augustine, Ph.D.
Dean

c: Dr. Terry Barnhart, Mentor and Graduate Coordinator
Dr. Anita Shelton, Department Chair
Mr. Glenn Hild, Dean, College of Arts and Humanities

Appendix 3: Grants & Awards



3000 Woodcreek Dr., Suite 310
Downers Grove, Illinois 60515-5408

p 630.665.5556
f 630.598.5276

dupagefoundation.org

November 20, 2015

Ms. Michelle Podkova
DuPage County Historical Museum Foundation
102 E. Wesley Street
Wheaton, IL 60187

Dear Michelle,

Congratulations! I am pleased to inform you that the DuPage Foundation Board of Trustees, at its November 19, 2015 Board Meeting, approved a grant to your organization in the amount of \$2,500. This grant, made upon recommendation from the Grant Committee, is to be used to support the Fun Unplugged exhibit that will educate children and adults about the history of play in DuPage County through artifacts, interactive stations, and special programming and was made possible with the earnings from the Cleve E. Carney Fund.

Please review, sign and upload the grant agreement to your account by Wednesday, December 9. The terms and conditions outlined in the agreement must be met in order for you to receive your grant check and to be eligible to apply for future grants. If there are changes in your organization that would affect your ability to carry out the program for which this grant was made, please notify me as soon as possible.

We will be distributing grant checks and recognizing this cycle's grant recipients at our Holiday Open House on Wednesday, December 16 from 4:00-6:00 p.m. at the DuPage Foundation, 3000 Woodcreek Dr., Suite 310 Downers Grove, and look forward to seeing you there. You are welcome to invite a member of your board or staff to join us in this celebration. Please RSVP to Elizabeth DiNovis at (630) 598-5295 or elizabeth@dupagefoundation.org with the names of the attendees from your organization.

At the conclusion of your grant or by November 1, 2016, whichever occurs first, you will be required to complete a final report. The final report is an opportunity for your organization to reflect upon the challenges and successes you have experienced related to this grant and will provide the DuPage Foundation with valuable information to evaluate the impact of our grantmaking in the community. The final report form is available at [Final Report Forms](#) under the Community Needs section.

On behalf of the Board of Trustees, thank you for all you do to improve the quality of life for the residents of DuPage County.

Sincerely,

Barb Szczepaniak
Director of Programs

P.S. A media release and photo will be sent to you after the Holiday Open House. In the meantime, please share the news about your grant on social media and don't forget to tag the DuPage Foundation.

Officers

Stephen M. Burt
Chair

Denice A. Gierach
Vice Chair

Ernest J. Mrozek
Secretary

Charles B. McKenna
Treasurer

Board of Trustees

Betsy K. Brosnan

Phillip R. Cabrera

Lamounte Coleman

Marilyn K. Gaston

Christopher M. Janc

William J. Kennedy

Mary Kay Kluge

Richard W. Kuhn

Bruce K. Lee

Daniel Maguire

Nathaniel P. Wasson

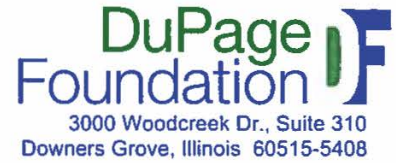
Joyce A. Webb

Joseph L. Weidenbach

President

David M. McGowan

Appendix 3: Grants & Awards



p 630.665.5556
f 630.598.5276

dupagefoundation.org

November 27, 2015

Ms. Michelle Podkova
Museum Educator
DuPage County Historical Museum Foundation
102 E. Wesley Street
Wheaton, IL 60187

Dear Ms. Podkova:

At the suggestion of the Shebik family, a \$1,000 grant is being awarded to DuPage County Historical Museum Foundation from the History DuPage Fund, a donor-advised fund of The DuPage Community Foundation, d/b/a the DuPage Foundation. The grant is to fund operations and must be used within 12 months of the issue date.

If you publicize this grant, please list it as a donation from the History DuPage Fund of the DuPage Foundation.

Please sign and return this letter to indicate 1) that there have been no changes in your organization's IRS status, 2) your agreement to the terms of the grant, and 3) that all funds will be spent for charitable purposes.

In addition, your organization confirms 1) that this grant does not fulfill the payment of any pledge or other financial obligation, 2) that no goods or services of value will be provided to the donor or to the Foundation as stipulated by Internal Revenue Service regulations and our agreement with the donor, and 3) that, in compliance with Executive Order 13224 and the Patriot Act, no funds provided by the DuPage Foundation will be used to support terrorist activity nor to promote or engage in violence, terrorism, or bigotry.

On behalf of the Shebik family and the DuPage Foundation Board of Trustees, I am pleased to forward this grant and hope it will further your mission. If you have any questions regarding this grant, please feel free to call me.

Sincerely,

Barb Szczepaniak
Director of Programs

I hereby acknowledge receipt of your check for \$1,000 and agree to the terms of the grant.

Michelle Podkova Museum Manager & Educator 12/9/15
Signature Title Date

Enclosure

- Officers**
Stephen M. Burt
Chair
- Denice A. Gierach
Vice Chair
- Ernest J. Mrozek
Secretary
- Charles B. McKenna
Treasurer
- Board of Trustees**
Betsy K. Brosnan
Phillip R. Cabrera
Lamonte Coleman
Marilyn K. Gaston
William M. Giffin
Christopher M. Janc
William J. Kennedy
Mary Kay Kluge
Richard W. Kuhn
Bruce K. Lee
Daniel Maguire
Charles G. Mueller
Nathaniel P. Wasson
Joyce A. Webb
Joseph L. Weidenbach

President
David M. McGowan

Appendix 3: Grants & Awards



3000 Woodcreek Dr., Suite 310
Downers Grove, Illinois 60515-5408

p 630.665.5556
f 630.598.5276

dupagefoundation.org

December 23, 2015

Ms. Michelle Podkova
Museum Educator
DuPage County Historical Museum Foundation
102 E. Wesley Street
Wheaton, IL 60187

Dear Michelle:

At the suggestion of the donor-advisor, a \$5,500 grant is being awarded to the DuPage County Historical Museum Foundation from the Conrad and Doris Brassine Charitable Fund, a donor-advised fund of The DuPage Community Foundation, d/b/a the DuPage Foundation. The grant is unrestricted and must be used within 12 months of the issue date.

If you publicize this grant, please list it as a donation from the Conrad and Doris Brassine Charitable Fund of the DuPage Foundation.

Please sign and return this letter to indicate 1) that there have been no changes in your organization's IRS status, 2) your agreement to the terms of the grant, and 3) that all funds will be spent for charitable purposes.

In addition, your organization confirms 1) that this grant does not fulfill the payment of any pledge or other financial obligation, 2) that no goods or services of value will be provided to the donor or to the Foundation as stipulated by Internal Revenue Service regulations and our agreement with the donor, and 3) that, in compliance with Executive Order 13224 and the Patriot Act, no funds provided by the DuPage Foundation will be used to support terrorist activity nor to promote or engage in violence, terrorism, or bigotry.

On behalf of the donor-advisor and the DuPage Foundation Board of Trustees, I am pleased to forward this grant and hope it will further your mission. If you have any questions regarding this grant, please feel free to call me.

Sincerely,

Barb Szczepaniak
Director of Programs

I hereby acknowledge receipt of your check for \$5,500 and agree to the terms of the grant.

Michelle Podkova Museum Manager + Educator 1/5/16
Signature Title Date

Enclosure

- Officers**
- Stephen M. Burt
Chair
- Denice A. Gierach
Vice Chair
- Ernest J. Mrozek
Secretary
- Charles B. McKenna
Treasurer

- Board of Trustees**
- Betsy K. Brosnan
- Phillip R. Cabrera
- Lamounte Coleman
- Marilyn K. Gaston
- William M. Giffin
- Christopher M. Janc
- William J. Kennedy
- Mary Kay Kluge
- Richard W. Kuhn
- Bruce K. Lee
- Daniel Maguire
- Charles G. Mueller
- Nathaniel P. Wasson
- Joyce A. Webb
- Joseph L. Weidenbach

President
David M. McGowan

Appendix 3: Grants & Awards



AASLH
American Association
for State and Local History

1717 Church Street
Nashville, TN 37203-2991
Phone: 615/320-3203
Fax: 615/327-9013
membership@aaslh.org
www.aaslh.org

May 15, 2015

Ms. Mychal Brown
The DuPage County Historical Museum
102 E. Wesley St.
Wheaton, IL 60187

Dear Ms. Brown:

Thank you for submitting a nomination for the *Inheriting DuPage: A Family History exhibit and associated programming* to the 2015 AASLH Leadership in History Awards Program. The committee reviewed over 100 wonderful nominations this year and was quite impressed with the strength of the nominations and the impact America's history institutions are making in their communities.

I regret to inform you that your nomination was not chosen as an award winner this year. To be a national finalist is a testimony to the fine work of your nomination. We very much appreciate your participation in this program and the fine work you are doing in the field of state and local history.

The committee appreciated that the project provides training for families who want to research their family history. They felt, however, that the exhibit needed to include more viewpoints to provide perspective for the narrative.

I would like to extend a personal invitation to attend the 2015 AASLH Annual Meeting in Louisville, KY, on September 16-20. The meeting is a wonderful place to meet your colleagues in state and local history. The numerous sessions, workshops, tours, and evening events also provide excellent opportunities for professional development.

Should you have any questions regarding the nomination, please contact your state awards chair, Jeanne Schultz Angel (illinoismuseums@gmail.com), or your regional awards chair, Jason Crabill (jcrabill@ohiohistory.org).

On behalf of the officers, Council, staff, and membership of AASLH, I offer my sincere thanks for your excellent work to make the past meaningful to all Americans. Thank you for your participation in the Leadership in History Awards program. We look forward to working with you again in the future.

Sincerely,

John Dichtl
President and CEO

YOUR HOME FOR STATE AND LOCAL HISTORY

Appendix 3: Grants & Awards



Illinois Association of Museums
1 Old State Capitol Plaza
Springfield, IL 62701
www.illinoismuseums.org
HPA.IAM@illinois.gov

August 19, 2015

DuPage Society of Model Engineers
102 E Wesley Ave
Wheaton, IL 60187
Attn: Mychal Brown

Dear Ms. Brown,

Congratulations! The DuPage Society of Model Engineers will be recognized with a Gold Award on its 50th anniversary by the Illinois Association of Museums.

The Illinois Association of Museums will present this award during our Annual Fall Conference, September 24-25, 2015. The presentation will be at the awards dinner Friday, September 25, 6:00pm – 9:00pm at the Trutter Museum in Springfield. IAM is extending the early bird dinner rate of \$45.00 each for two members of your staff.

We hope you and members of your organization will attend this exciting conference and join us to celebrate Illinois museums and their accomplishments. Registration forms are available at the IAM website, <http://www.illinoismuseums.org/inspire/annual-conference/>

Please RSVP your dinner attendance by September 1 to IAM Board and Awards Committee members, Claudia Dent, Wabash County Museum, Board President, ctdant@frontier.com

or

Jeff Woodard, McLean County Historical Museum, Director of Marketing & Community Relations
jwoodard@mchistory.org

Again, congratulations, and we look forward to seeing you in Springfield.

Sincerely,

A handwritten signature in cursive script that reads 'Pamela I. Rohleder'. The signature is written in black ink on a light blue background.

Pamela I. Rohleder
Awards Chairperson

Appendix 3: Grants & Awards



Illinois Association of Museums
1 Old State Capitol Plaza
Springfield, IL 62701
www.illinoismuseums.org
HPA.IAM@illinois.gov

August 19, 2015

DuPage County Historical Museum
102 E Wesley Ave
Wheaton, IL 60187
Attn: Mychal Brown

Dear Ms. Brown

Congratulations, the DuPage County Historical Museum's "Inheriting DuPage: A Family History" has been recognized with an Award of Excellence in the Exhibit's category. The reviewers commended the museum on focusing on one family and telling the generational stories using the large collections of artifacts from one of its descendants. It is a unique way to experience, learn and celebrate the 175th anniversary of the founding of DuPage County.

The Illinois Association of Museums will present this award during our Annual Fall Conference, September 24-25, 2015. The presentation will be at the awards dinner Friday, September 25, 6:00pm – 9:00pm at the Trutter Museum in Springfield. IAM is extending the early bird dinner rate of \$45.00 each for two members of your staff.

We hope you and members of your organization will attend this exciting conference and join us to celebrate Illinois museums and their accomplishments. Registration forms are available at the IAM website, <http://www.illinoismuseums.org/inspire/annual-conference/>

Please RSVP your dinner attendance by September 1 to IAM Board and Awards Committee members, Claudia Dent, Wabash County Museum, Board President, ctdant@frontier.com
or
Jeff Woodard, McLean County Historical Museum, Director of Marketing & Community Relations
jwoodard@mchistory.org

Again, congratulations, and we look forward to seeing you in Springfield.

Sincerely,

Pamela I. Rohleder
Awards Chairperson

Appendix 4: Intern & Volunteer Hours

Museum Intern and Volunteer Hours

Intern Name	Semester	Hours
Brian Failing	Fall	390
Colleen Filipek	Spring	141.5
Andrea Martinez	Spring	51.5
Debra Smetana	Summer	48.5
Dan Will	Summer	400
Amelia Winston	Summer-Fall	214
Total		1,245.5

Volunteer Name	Year Started	2015 Hours
Melody Coleman	2014	85.5
Brian Failing	2015	24.5
Peggy Goddeau	2015	12.25
Irina Gorbunova-Ford	2014	24.5
Jean Gieraltowski	2000	43.25
Jerry Gieraltowski	2004	43.25
Matthias Joireman	2015	60
John Kelly (approx.)	2014	15
Larry Kmiecik	2015	28.5
Emily McCafferty	2012	110.25
Nancy Morris	2010	81
Jackie Niemeyer	2015	6.5
Craig Passley	2014	92
Ashley Serwas	2015	18
Clare Sokolowski	2014	33
Jennifer Warner	2012	20.25
Brandon West	2015	49
Joseph Ward	2015	24.5
Totals		771.25



All Aboard!

2015 Train Schedule

Each hour are open to all ages and are free admission (except Saturday which costs \$5.00).

January 17 & 24
February 7
March 7
April 6
May 6 & 20
June 6
July 15
August 19 & 26
September 19
October 17 & 24
November 17
December 13

102 East Wesley • Wheaton, IL 60187 • 630.510.4941 • dupagemuseum.org



Discover & Explore

with the DuPage County Historical Museum

Current Changing Exhibit:
Subversive DuPage: A Family History
 Open through September 7, 2015
 Learn about the history of the county through an exhibit that tells the story of the county through an exhibit that tells the story of the county through an exhibit that tells the story of the county.

Victorian Craft Day
 Saturday, July 11 (10 AM - 4 PM) - DuPage County Historical Museum 1200 E. East Ave. • Wheaton, IL 60187 • 630.510.4941 • dupagemuseum.org

Preserving Your Family History: An Archival Workshop
 Thursday, July 23 (7 PM - 9 PM) - DuPage County Historical Museum 1200 E. East Ave. • Wheaton, IL 60187 • 630.510.4941 • dupagemuseum.org

Walking Tour of Historic Fletcher Farm - Make It a Picnic
 Saturday, August 15 (10 AM - 4 PM) - Fletcher Farm & Winery 1200 E. East Ave. • Wheaton, IL 60187 • 630.510.4941 • dupagemuseum.org

All Aboard and HO Gauge Model Railroad
 Saturday, July 18, August 15 & 22, 29 August 19 & 26, September 19 & 26, October 17 & 24, November 17, December 13
 102 E. Wesley Street | Wheaton, IL | 630.510.4941 | dupagemuseum.org



Camps 2015

Look inside for our terrific LEGO® summer camps!

General Information
 Please contact the museum at 630.510.4941 for questions regarding any of the summer camps. Registration is available online at wheatonparkdistrict.com and by visiting the museum.

Reservations for camps will only be given if requested by the Wednesday before the first day of camp.

102 E. Wesley Street
 Wheaton, IL 60187
 630.510.4941
dupagemuseum.org

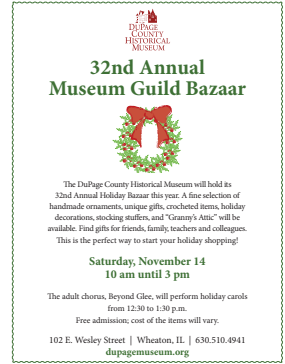
Museum Hours
 Monday-Friday 9:30A-4:30P
 Saturday/Sunday 10A-4P



Camps 2015

Look inside for our terrific LEGO® summer camps!

102 E. Wesley Street | Wheaton, IL | 630.510.4941 | dupagemuseum.org



32nd Annual Museum Guild Bazaar

The DuPage County Historical Museum will hold its 32nd Annual Holiday Bazaar this year. A fine selection of handmade ornaments, unique gifts, crocheted items, holiday decorations, stocking stuffers, and "Cranmy Arts" will be available. Find gifts for friends, family, teachers and colleagues. This is the perfect way to start your holiday shopping!

Saturday, November 14
 10 am until 3 pm

The adult chorus, Beyond Glee, will perform holiday carols from 12:30 to 1:30 pm.
 Free admission; cost of the items will vary.

102 E. Wesley Street | Wheaton, IL | 630.510.4941 | dupagemuseum.org



Wedding Traditions

Over 100 Years of Wedding Traditions and Wedding Traditions in DuPage County

October 17, 2015 - July 31, 2016

your county. your history.



The DuPage County Historical Museum welcomes visitors to an intimate history lesson on the importance of DuPage County.

- Permanent exhibit on DuPage County history
- 100+ group social activities for DuPage County residents
- Hands-on activities for younger visitors
- Changing exhibits on DuPage County's history
- Special events, open, educational, programs, summer camps, and more!
- Museum Gift Shop

Opening Events

- October 6, 2015 - On Par for DuPage Golf Outing Event
- October 16, 2015 - Wedding Traditions Unveiled Preview Event
- November 2015-January 2016 - Holiday Spins
- February 2016 - Casino Night Event
- January 23, 2016 - Wedding Traditions Unveiled Behind the Scenes Event
- April 9, 2016 - Wedding Traditions Unveiled Victorian Wedding and Formal Dinner Sale

Future Exhibits

- October 17, 2015 - July 31, 2016 - Wedding Traditions Unveiled
- February 13, 2016-February 26, 2018 - Fun Enigmas Exhibit Series
- September 17, 2016-July 2017 - Fun Enigmas II
- October 2016 - March 2017 - History of Photography
- April 2017-October 2017 - Alan's Natural Library History

DuPage County Historical Museum is open:

- Monday-Friday, 9:30 am to 4:30 pm
- Saturday, 10:00 am to 4:00 pm
- Free Admission

102 E. Wesley Street, Wheaton, IL, 630.510.4941 | dupagemuseum.org



Explorers Club

Become a part of the most recent membership program and discover a whole new side to the DuPage County Historical Museum.

JOIN TODAY FOR ONLY \$20* and start receiving member-only benefits - perfect for the young explorer.

Member Exclusive Benefits:

- **Train Saturdays**** - The train exhibit will stay open on certain hours for Explorers Club members on March, June, September and December.
- **LEGO Exhibits**** - One hour early admission to the popular, semi-annual LEGO® exhibit.
- **Night at the Museum Party**** - admission to the Explorers Club members-only annual party.
- **Birthday Party Discounts** - 10% off basic birthday party packages.

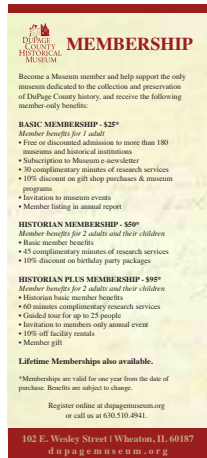
Free Member Gift & ID Card

*Explorers Club membership is valid for one year. Additional children in the same household can be added for only \$10 per child.

**Admits under the age of 2 and parents of Explorers Club members also admitted.

To join, register online at dupagemuseum.org or call 630.510.4941.

102 E. Wesley Street | Wheaton, IL 60187 | dupagemuseum.org



MEMBERSHIP

Become a Museum member and help support the only museum dedicated to the collection and preservation of DuPage County history, and receive the following member-only benefits:

BASIC MEMBERSHIP - \$25*

- Free or discounted admission to more than 180 museums and historical institutions
- Subscription to Museum e-newsletter
- 30 complimentary minutes of research services
- 10% discount on gift shop purchases & museum programs
- Invitation to museum events
- Member listing in annual report

HISTORIAN MEMBERSHIP - \$50*

- Member benefits for 2 adults and their children
- Basic member benefits
- 45 complimentary minutes of research services
- 10% discount on birthday party packages

HISTORIAN PLUS MEMBERSHIP - \$95*

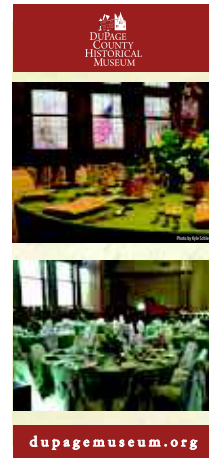
- Member benefits for 2 adults and their children
- Historic basic member benefits
- 60 minutes complimentary research services
- Guided tour for up to 25 people
- Invitation to members only annual event
- 10% off facility rentals
- Member gift

Lifetime Memberships also available.

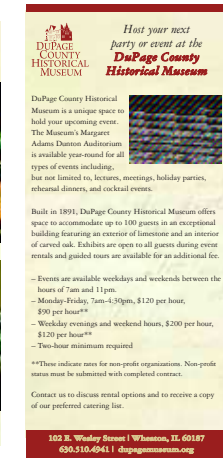
*Memberships are valid for one year from the date of purchase. Benefits are subject to change.

Register online at dupagemuseum.org or call us at 630.510.4941.

102 E. Wesley Street | Wheaton, IL 60187 | dupagemuseum.org



dupagemuseum.org



Have your next party or event at the DuPage County Historical Museum

DuPage County Historical Museum is a unique space to hold your upcoming event. The Museum's Margaret Adams Dutton Auditorium is available year-round for all types of events including, but not limited to, lectures, meetings, holiday parties, rehearsal dinners, and cocktail events.

Built in 1891, DuPage County Historical Museum offers space to accommodate up to 100 guests in an exceptional building featuring an exterior of limestone and an interior of carved oak. Exhibits are open to all guests during event rentals and guided tours are available for an additional fee.

- Events are available weekdays and weekends between the hours of 7am and 11pm.
- Monday-Friday, 7am-4:30pm, \$120 per hour, \$50 per hour**
- Weekend evenings and weekend hours, \$200 per hour, \$120 per hour**
- Two-hour minimum required

**These indicate rates for non-profit organizations. Non-profit status must be submitted with completed contract.

Contact us to discuss rental options and to receive a copy of our preferred catering list.

102 E. Wesley Street | Wheaton, IL 60187 | 630.510.4941 | dupagemuseum.org



FUN Unplugged

Exhibit Series

Childhood Memories
 February 13, 2016-September 25, 2016
 Enjoy the simplicity of a time where play and learning were stimulated without electronics. Become absorbed in the delightful innocence of DuPage County's past as you learn about the various toys and games of the 19th and 20th century.

Little Adults
 November 12, 2016-May 29, 2017
 Throughout the 19th and early 20th centuries, childhood was seen as a wasteful, unproductive stage in life. Learn how everything from army figurines to tea sets were creatively used to make children grow up faster.

Outdoor Adventures
 July 15, 2017-February 26, 2018
 Nothing says more about childhood than the great outdoors. Those magical moments and lasting impressions are recreated in this imaginative exhibit.



FUN Unplugged


Exhibit Series

Childhood Memories
 February 13, 2016-September 25, 2016
 Relive fond memories of childhood glory. Enjoy the simplicity of a time where play and learning were stimulated without electronics. Become absorbed in the delightful innocence of DuPage County's past as you learn about the various toys and games of the 19th and 20th century.

Little Adults
 November 12, 2016-May 29, 2017
 Throughout the 19th and early 20th centuries, childhood was seen as a wasteful, unproductive stage in life. Toys and games were created to push children into adulthood; miniature versions of adult activities taught children rules and expectations of proper behaviors, etiquette and morals. Learn how everything from army figurines to tea sets were creatively used to make children grow up faster.

Outdoor Adventures
 July 15, 2017-February 26, 2018
 Nothing says more about childhood than the great outdoors. With creativity sparked by the endless possibility of the open air, specific accessories, toys and games helped to create memories in the backyard and school playground. Those magical moments and lasting impressions of outdoor fun are recreated in this imaginative exhibit.

Signage



*Rent the
Museum Auditorium*
Meetings ~ Celebrations ~ Weddings
dupagemuseum.org
Photo by Kyle Schlegel



DUPAGE COUNTY HISTORICAL MUSEUM
FREE ADMISSION!
*All Aboard for
Train Saturdays*
Third & Fifth Saturday of each Month
1:30-3:30pm
dupagemuseum.org



DUPAGE COUNTY HISTORICAL MUSEUM
GREAT NEWS!
We are getting a
NEW ROOF!
The Museum will be open
during construction.
dupagemuseum.org

FUN
Unplugged
Toys & Games Exhibit Series

Childhood Memories
February 13, 2016-
September 25, 2016

Little Adults
November 12, 2016-
May 29, 2017

Outdoor Adventures
July 15, 2017-
February 26, 2018

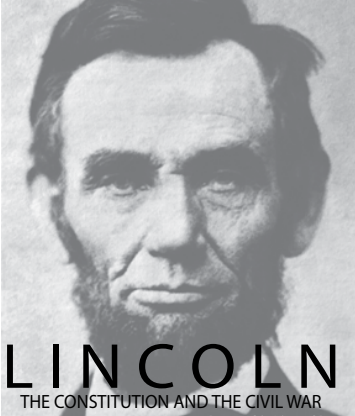
DUPAGE COUNTY HISTORICAL MUSEUM



Holiday Bazaar
DuPage County Historical Museum Guild
Saturday | 10A-3P
Ornaments | Wreaths | Gifts
630.510.4941
dupagemuseum.org

The Museum Guild's
Holiday Bazaar
is this Saturday!
dupagemuseum.org


Web & Print Ads





Visit the DuPage County Historical Museum to see the traveling exhibition "Lincoln: The Constitution and the Civil War" from May 13 through June 26.

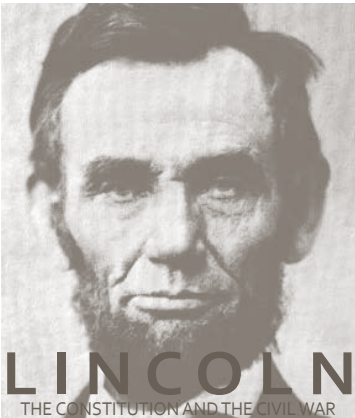
With the nation on the brink of Civil War, President Lincoln struggled with issues of secession, slavery and civil liberties. Lincoln used the Constitution to confront these three intertwined crises of war, ultimately reinventing the Constitution and the promise of American life.

LINCOLN
THE CONSTITUTION AND THE CIVIL WAR
Courtesy of the Library of Congress

Funded by  Humanities

Presented by  ALA American Library Association


 NATIONAL CONSTITUTION CENTER





Visit the DuPage County Historical Museum to see the traveling exhibition "Lincoln: The Constitution and the Civil War" from May 13 through June 26.

With the nation on the brink of Civil War, President Lincoln struggled with issues of secession, slavery and civil liberties. Lincoln used the Constitution to confront these three intertwined crises of war, ultimately reinventing the Constitution and the promise of American life.

LINCOLN
THE CONSTITUTION AND THE CIVIL WAR
Courtesy of the Library of Congress

Funded by  Humanities

Presented by  ALA American Library Association

 NATIONAL CONSTITUTION CENTER

Invitations

Please join us at the

2015 Gatsby Casino Night

benefiting
The DuPage County Historical Museum Foundation

Local Celebrity Dealers | Beer & Wine | Appetizers | \$50 Charity Chips

Saturday, March 7, 2015 | 7:00pm-10:00pm

DuPage County Historical Museum
102 E. Wesley Street | Wheaton, Illinois

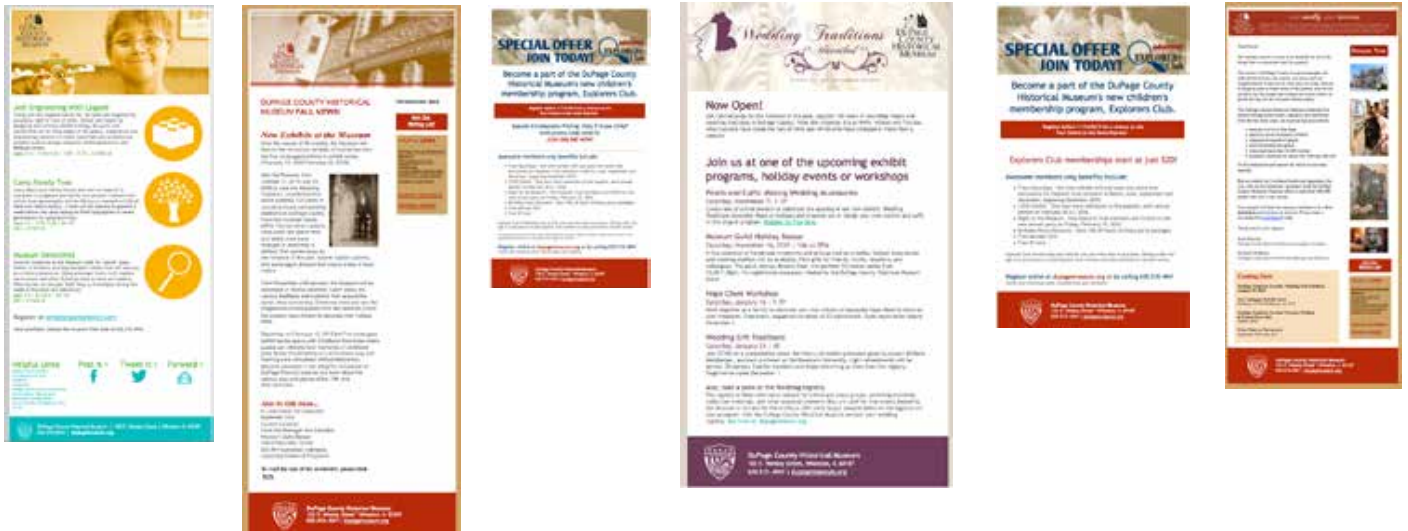
\$75 Per Person | \$125 Per Couple | \$500 Group of Ten
Register online at dupagemuseum.org or return response card by Monday, March 2, 2015.
Questions, please call 630-510-4986 or email RSVP@wheatonparks.org.
Sponsorship information available online at dupagemuseum.org.
Gatsby or Cocktail Attire | 21 and Older Event

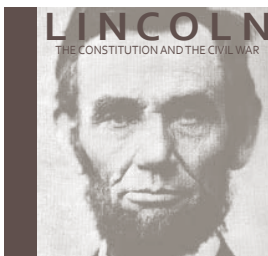
Presented by  WHEATON BANK & TRUST COMPANY
A WENTWORTH COMMUNITY BANK



Appendix 5: Marketing

Eblasts & Social Media





LINCOLN
THE CONSTITUTION AND THE CIVIL WAR

May 13-June 26
DuPage County Historical Museum | Free Admission
dupagemuseum.org

Funded by Presented by



FREE ADMISSION

Permanent & Changing Exhibits
Summer Camps
HO Gauge Model Railroad
Programs & Events



Wedding Traditions
Unveiled

DUPAGE COUNTY HISTORICAL MUSEUM

October 17, 2015 - July 31, 2016

Over 100 Years of Courtship,
Rituals, and Wedding Traditions
in DuPage County



Museum Curator Mychal Brown talks about the "Inheriting DuPage" exhibit at the DuPage Historical Museum in Wheaton.

'Inheriting DuPage' tells the story of early settlers

By JESSICA CILELLA
jcilella@dailypress.com

Through just one person, the stories of five founding families in DuPage County can be told.

That person — Patricia Torode Vaillancourt Woodstrup — devoted much of her life to preserving documents, photos and artifacts from the generations that came before her.

The collection eventually grew to more than 5,000 pieces, most of which Patricia's family donated to the DuPage County Historical Museum after her death in 2003.

"A lot of collections and donations to museums do not come in that kind of shape," said museum educator Michelle Podkova. "They're not as large, they're not as all-inclusive for such a large number of family members, and a lot of them, they're just a piece here and there of something historically significant."

Patricia's artifacts are now on display at the museum, in an exhibit called "Inheriting DuPage: A Family History," which is being held in conjunction with the 175th anniversary of the founding of DuPage County.

Exhibit Curator Mychal Brown laughed as she said she knows more about the founding families in the exhibit than she does of her own ancestry. She has been working on the project since 2010.

Her passion for preserving the history of some of the county's early settlers — including the Torodes, the Fullers, the Rodgers, the Plummers and the Thurstons — was evident as she led a tour through the exhibit, which is spread over three floors.

"It's the largest donation we've ever received and a lot



A family tree of Patricia Irene Vaillancourt Woodstrup at the "Inheriting DuPage" exhibit at the DuPage Historical Museum in Wheaton.

of it dates back to the early period of DuPage history, so it's very exciting," she said.

Brown will explain what's involved in putting together an exhibit during "Inside Inheriting DuPage," a free event taking place at 1 p.m. Saturday at the museum.

"We'll have a presentation at the beginning and I'll give more of a history about the collection — about Patricia, how we got the collection — and then what we've done at the museum to process the collection," Brown said.

The event will also include a tour where Brown hopes to highlight some of her favorite artifacts and stories that didn't get into the exhibit.

"Now, we have a pretty good

handle on what is in the collection and the history of family, but there is like this fringe area, and everywhere there's room for more research, more information," she said.

Even though the exhibit is based on Patricia's lineage, Brown and Podkova said it serves as a way to explain the shared experiences of early pioneers in the county; their hard work, sharp business sense, attempts to be frugal, perseverance.

"This is an average settler story," Brown said. "There are a lot more stories that different families have, from the same time period, the same type of story, but to be able to focus so minutely on one collection kind of gives you depth."

Getting to know some of DuPage County's first families

The Torodes

Nicholas James Torode Sr. brought his family to the U.S. from the Isle of Guernsey off France in 1818. They settled in Massachusetts and later moved to Ohio for work.

A carpetbag and travel blankets that the Torodes brought on their six-week trip across the ocean are featured in the exhibit.

In the early 1830s, Nicholas' second son, Peter, rode on horseback through Michigan, Indiana and Illinois to find land that had access to water, forest and limestone.

"It's not the stereotypical settler story that I would have thought of, where they just sold all their belongings and got a wagon and went," exhibit curator Mychal Brown said. "They were very, very shrewd in their planning. They were building wealth, they were saving money to purchase land."

The place Peter found was in DuPage County, near what is now Roosevelt and York roads. The Torodes farmed the land, grew one of the first fruit orchards in the county, gathered limestone from a quarry, ran a saw mill and managed a hotel.

One of the sons, Philander, inherited the homestead and married Abigail Fuller, a member of another founding family of DuPage. Although the Fullers are probably the most well-known family in the exhibit, many of the artifacts are from the Torodes.

The quarry was eventually shut down, filled with water and turned into a swimming hole. When the Torodes sold the land it was made into the county's first forest preserve — York Woods.

The exhibit features ledgers the Torodes kept of limestone purchases, along with stays at the hotel and other business mementos. There is also a large dough box they used for making bread, a branding iron with the Torode name on it

and Philander's wedding suit.

The Fullers

Benjamin Fuller had 12 siblings whom he convinced to move with him — kids and spouses in tow — from New York to Illinois.

"The Great Fuller Exodus," as Brown put it, was more "Oregon Trail" style, in covered wagons and steamboats over the Great Lakes. The area where the family settled eventually was named Fullersburg. It is now Oak Brook and Hinsdale.

Benjamin's sister Catherine was the mother of Abigail — Philander's wife.

Confused yet? Family trees throughout the exhibit help show how everyone is related.

Two women who stand out include Loie Fuller, who was born in a tavern in DuPage and went on to become a world-famous dancer, and Mary Fuller, who was the first teacher in the Salt Creek area.

(Mary) traveled house to house, teaching the schoolchildren," Brown said, adding that she brought two large dogs with her to scare away wolves and bears.

A video of Loie twirling in a silk dress is on display in the exhibit, along with reward cards Mary gave her students.

The Rogers

Patricia's grandmother Minnie was a descendant of the Rogers family.

The exhibit includes love letters Minnie wrote to her future husband, John Torode, tea towels she sewed and artifacts that explain her fondness for gardening.

Minnie's father, Frank Rogers, settled in Downers Grove with his family in the 1840s and started a farm.

Frank was also a township collector. His brother, Theodore, was one of the first male schoolteachers in the county and was influential in starting

the Downers Grove Ploymboys Group, an early political organization that supported Republicans.

The Plummers
Frank's wife, Mary, was a member of the Plummer family.

Her father, Benjamin, came to DuPage in 1846. He owned the York Center Cheese Factory on York Road with his brother and served in the same Civil War cavalry as Frank.

Some items of interest from the Rogers and Plummers include Mary's well-preserved hand muff made of seal skin and a box containing locks of Minnie's hair from her childhood, likely set aside to be put into a piece of jewelry.

The Thurstons

The fifth founding family that Patricia is a descendant of are the Thurstons, who Brown admits get "swept in with the Fullers" in the exhibit.

Patricia's great-great-grandfather David Thurston was first connected with the Fullers back in New York, where he married Catherine Fuller.

The two had Patricia's great-grandmother Abigail in tow when they migrated to DuPage County with the Fuller clan. David bought a hotel in Hinsdale and later sold it to Abigail's husband, Philander Torode.

"A lot of these first families, because of the nature of a rural area ... they had to be very creative with their skills," museum educator Michelle Podkova said.

That almost always involved farming, but also starting businesses and — as seen in the Thurstons' case — renting land or property.

"We do have some records in Katherine's diary and Aba (Gail)'s diary that talk about when their sons or husbands are off, that they were collecting rent from some of these properties," Podkova said.

6

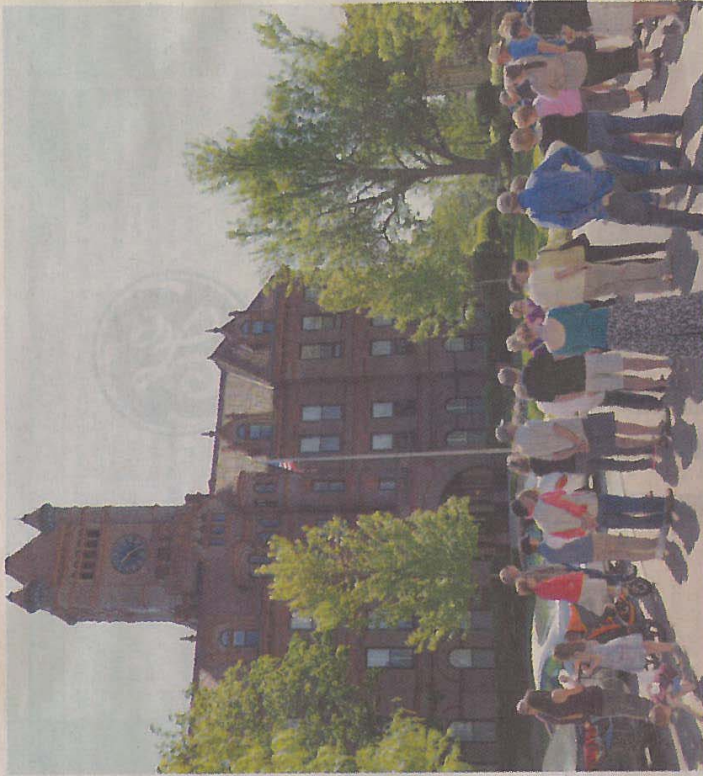
NEWS

mysuburbanlife.com • Thursday, June 4, 2015 • CD

A stroll through time



DuPage County Historical Museum manager and educator Michelle Podkova leads a tour May 23 of historic landmarks in downtown Wheaton. Attendees learned about the city's railroad stop, the old county courthouse and other landmarks in downtown Wheaton in celebration of its long and storied history.



Photos by Steve Bittinger - For Shaw Media
A tour group stops in front of the old county courthouse May 23 during a history walk of downtown Wheaton. Community members got a grand tour of historic Wheaton on May 23 courtesy of the DuPage County Historical Museum.

Museum celebrates founding families with 'Inheriting DuPage'

13 NEWS
 CH • Thursday, July 9, 2015 • mysouthbanlife.com • Southban Life WTL/MCP



Nathan Lurz - nlurz@shawmedia.com
 Wendi Woodstrup, daughter of Patricia Torode Vaillancourt Woodstrup, looks over her family's collection of artifacts from the 1800s during a July 2 visit to the DuPage County Historical Museum.

By NATHAN LURZ
 nlurz@shawmedia.com

WHEATON - Thanks to the love one woman had for her family's legacy, more than 5,000 pieces of century-old history are at the DuPage County Historical Museum.

Longtime DuPage County resident Patricia Torode Vaillancourt Woodstrup, who died in 2003, was passionate about her family, daughter Wendi Woodstrup said.

"Family was always important," she said. "We always thought of it as storytelling. We didn't know the people in these photos ... but it wasn't just a story. It's a look at how many people lived and worked in this area."

Wendi is one of Patricia's five children who inherited the thousands of photos, clothes and other items largely dating back to the middle and late 1800s.

The collection highlights the history of five prominent DuPage County families to whom Patricia was related - the Torodes, Fullers, Rodgers, Plummers and Thurstons - to give a glimpse into the lives of the county's early settlers. Wendi came to the exhibit, titled "Inheriting DuPage: A Family History," last week during a visit from her home in Hawaii.

Museum Assistant Mychal Brown, who has been working on the project since 2010, said the museum wanted to focus on the subject for the county's 175th anniversary this year, but could display only 288 pieces because of space restraints.

The collection proved to be a museum coordinator's dream. Most items were meticulously labeled with names of owners, approximate dates and explanations.

"Most of the work was done for us," museum Manager and Educator Michelle Podkova said. "That really let us dive into it even further to put together the story."

Podkova said the size and depth of the loan was a first for the museum. Wendi said she and her siblings - who all live in the area - have loved seeing many items that filled their childhood home and attic on display.

"It's a little overwhelming," she said. "It's so incredible. We knew this museum was where we wanted it." The display runs through Sept. 7 at the museum, 102 E. Wesley St.

For information, visit dupagemuseum.org.

KNOW MORE...



Glen Ellyn Park District

Q: How do I attract Monarch butterflies to my garden?

A: Planting a garden that supports pollinators can be a very rewarding task and you don't have to have a large garden to make a difference. The Monarch butterfly has experienced a rapid decline in recent years and if homeowners across the country start planting "Monarch Waystations", we can help the survival of the species.

If you are looking to attract Monarchs there is one plant that you must include in your garden planning: milkweed. Monarch butterfly caterpillars are picky eaters and adult Monarch females lay their eggs on milkweed as it is the only plant larvae will eat!

In this area, there are a number of plants you can add to your landscaping which will attract Monarchs, as well as other butterflies, bees, moths and even hummingbirds. Many flowers - especially native plants - are a great source of nectar for adult Monarchs.

Choose a spot that receives at least six hours of sun a day, which is required by most butterfly-loving plants. When selecting milkweed, be sure you choose one that is appropriate for this area. This includes Common, Swamp, and Whorled milkweed or the vibrant orange Butterfly Weed.

In order to attract adult butterflies, add a mix of annuals and perennials that bloom throughout the growing season. For example, you may want to include allium or chives (early season), along with bee balm or black-eyed susan for the mid-season, and aster or sedum (late season).

Many of these plants can be picked up at your local nursery and specialty nurseries carry native plants and have knowledgeable staff to help answer questions.



Pharmacy

Q: What is the difference between a food allergy and a food sensitivity?

A: A food allergy is usually an immediate response with a symptom and it comes from an immune response (IgE and IgG immune reactions)

A food sensitivity is a measure of inflammation by the amount seen of white blood CELL swelling. This response is usually delayed and when you eat that food you get a serotonin release which to the brain is "happy chemical" and when you don't you have withdrawal symptoms (craving, headache, unpleasant feeling)

ALCAT is a brand of food sensitivities blood testing. Some doctors believe 60% of all illnesses. Glen Ellyn Pharmacy sells ALCAT tests.



Bob Listock, Pharmacist

Glen Ellyn Pharmacy
 an Integrative Health Center
 486 Roosevelt Rd • Glen Ellyn
 630-469-5200

Wedding traditions

DuPage Historical Museum exhibit looks at how nuptials have changed over the years

BY BRETT PRETO
Wheaton Park District

Have you ever wondered how much marriage can evolve over a century? Find out how the nature of nuptials has changed — or stayed the same — across DuPage County at “Wedding Traditions Unveiled,” DuPage County Historical Museum’s latest exhibit.

Museum visitors can explore the county’s wedding traditions, see extravagant dresses, and find out what customs have stood the test of time and which have changed in more than a century.

The exhibit opens Saturday, Oct. 17,

and continues through July 31 at 102 E. Wesley St., Wheaton. Hours are 8:30 to 4:30 p.m. weekdays and noon to 4 p.m. weekends.

The exhibit focuses on the approximately 100 years between the stately Victorian era and the tumultuous times of World War II.

“Today, many brides wear white, but that tradition did not start until after Queen Victoria married in 1840 in a white dress with orange blossoms,” said Michelle Podkova, museum manager and educator.

“Even until (the) 1890s, it was common to find brides in colored dresses because

If you go

What: Wedding Traditions Unveiled

When: Saturday, Oct. 17, to July 31

Hours: 8:30 a.m. to 4:30 p.m. weekdays; noon to 4 p.m. weekends

Where: DuPage Historical Museum, 102 E. Wesley St., Wheaton

Cost: Free; donations accepted

Info: dupagemuseum.org or (630) 510-4941

white dresses could be expensive and would often become dirty quickly.”

Get a first look at the exhibit from 6:30 to 8 p.m. Friday, Oct. 16, at the

See **EXHIBIT** on **PAGE 2**

DAILY HERALD 10/5/2015

Michael Zamora of Wheaton photographed the recent lunar eclipse from the Leask Lane Lake Trail in Wheaton.

Exhibit: Programs celebrate weddings

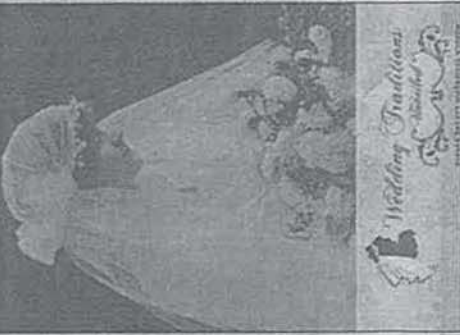
Continued from Page 1

Engagement Party Exhibit Preview. Admission is \$20 per person, \$30 per couple. Register at dupagemuseum.org.

At the exhibit's grand opening from noon to 4 p.m. Saturday, Oct. 17, munch on light refreshments, tour the exhibit, and satisfy your curiosity by asking the curator whatever comes to mind. Admission is free.

Then, from 1 to 3 p.m. Saturday, Nov. 7, you can make your own necklace and bracelet set or design your own necktie and cuffs in a drop-in program suitable for ages 3 and older. The program is free, but registration is required at dupagemuseum.org.

Exhibit activities continue into the new year, when you can decorate a miniature hope chest to store your keepsakes on Saturday, Jan. 16, and absorb the history of wedding showers from Northwestern



DuPage Historical Society's "Wedding Traditions Unveiled" exhibit opens Saturday, Oct. 17.

University Assistant Professor Michelle Weinberger on the same day. Registration opens Tuesday, Dec. 1, at dupagemuseum.org. Admission is \$5, free for members.

Next spring, a Victorian wedding comes to the

museum on Saturday, April 9, 2016. Shop nearly a dozen vendors at the wedding expo and get a peek into history with authentic demonstrations of a Victorian wedding, which were often orchestrated around superstitions and focused on keeping bad luck and evil spirits away from the newlyweds.

Admission is \$10, free for visitors who bring an item purchased from the wedding registry, which will help support museum programs.

For museum curator Ashley Downing, two Victorian-era dresses stand out.

"The daughter of one (original dress owner) and granddaughter of another decided to wear the wedding dresses at their own weddings," she said.

"Many women save their dresses hoping that, one day, their daughters will want to wear them, and the fact that in the 1930s and 1950s, someone thought the dress was so beautiful and memorable

that they wanted to show their own family history (is) just amazing."

Guests can add their own experiences to the displays, too. The museum invites visitors to submit their wedding photos to be included in a public collage. Photos should be in JPEG format at 5-by-7 inches and at least 300 dpi. The cost is \$10 per entry and the deadline is Saturday, Oct. 17.


The museum also has opened a wedding registry on Amazon.com. Interested parties can purchase items needed for school and Scout groups, workshop materials, collection materials, and other essential elements used for free events hosted by the museum or to care for the artifacts.

Gift cards to put toward items on the registry also are accepted. Search DuPage Museum under Wish Lists to view the registry.

For information, visit dupagemuseum.org or call (630) 510-4941.

Get the news you need when you need it: Follow us on Twitter @dailyherald

Daily Herald

 dailyherald.com

of the few outweigh
strong with a designated,
angelan

and willing breaking the
n and to segregate them
Michelle Mimi

This is a difficult issue that is best
handled by the local school board — not
by the federal administration in Wash-
ington. My guess is that the vast majority
of taxpayers and parents in District 211
agree with the decision of the local school
board. — posted by **Mark Taylor**

DuPage museum to get a new roof

BY ROBERT SANCHEZ

bsanchez@dailyherald.com

The 124-year-old building in downtown Wheaton that houses the DuPage County Historical Museum finally is getting a new roof, thanks to a \$200,000 private donation.

On Tuesday, it was announced the charitable arm of the Inland Real Estate Group Inc. donated the money after a promised state grant for the work failed to materialize because of Illinois' budgetary problems.

"I believe in public-private partnerships," said Dan Goodwin, chairman and CEO of the Inland Real Estate Group. "I believe that we in business must do our share to help the county."

Officials with the Wheaton Park District, which operates the museum, say the donation makes it possible for the roof repairs to start within the next week. The work is expected to be completed by late November.

"It eases our mind that our artifacts are going to be even more well protected with a roof that doesn't leak," said Michelle Podkova, museum manager and educator. "And our building, which we like to call our largest artifact, will be more protected."

In 2014, the countywide historical museum at 102 E. Wesley St. was awarded a \$600,800 grant from the state to replace its deteriorating asphalt

shingle roof with historically accurate red slate. But the county, which owns the building, never got the grant money. Goodwin said he learned about the museum's leaking and damaged roof — and the struggle to raise money to fix it — during a tour he did last year of the building. He said the first thing he did was suggest the museum use a material other than slate to fix the roof. After taking that advice, officials were able to reduce the cost of roof repair to less than \$300,000. Goodwin said he agreed to donate money to the project because the museum is part of the county's heritage.

"This is the legacy that we're going to leave behind," he said, "and it's a wonderful place."

Podkova said new shingles on the roof will be red. "So it actually will look like the building initially was supposed to," she said.

In addition to replacing the roof, other work will include exterior repairs and fixing water damage that extends beyond the roof itself, officials said. DuPage has agreed to pay for most of the project's total cost, which is estimated at \$451,000.

"This is an important building, which deserves to be revitalized as it houses important artifacts and itself serves as an important part of our history," county board member Amy Grant said. "We are fortunate this need will not go unanswered."



ESY OF
HOWIAK
wn at
clud-

will
ld

riders
ur
N.
of

Getting married soon?

Brides can learn wedding history, see what Wheaton has to offer at Saturday event

BY JESSICA CILELLA
jcilella@dailyherald.com

Brides taking part in the Downtown Wheaton Association's Wedding Walk on Saturday might not think hope chests, elegant folding fans used for flirting and brown wedding dresses are in style, but all those things took turns being all the rage between the Victorian era and World War II.

After doing some planning for their modern weddings, the brides and anyone interested in history are welcome to stop by the DuPage County Historical Museum, 102 E. Wesley St., for the grand opening celebration of a new exhibit called *Wedding Traditions Unveiled*.

Attendees will have a chance to tour the exhibit — which will remain open through July — enjoy some refreshments and chat with Curator Ashley Downing from noon to 4 p.m.

The wedding walk begins at AlphaGraphics, 128 N. Main St., and runs from 11 a.m. to 3 p.m. Each bride will receive a free goody bag and map of all the participating stores, and any bride who visits 75 percent of the shops will be eligible to win one of three gift baskets.

Registration is free for the bride and her "entourage," whether that includes her mom, her fiancé or her bridesmaids. Brides can register at the door or online before the event, at downtownwheaton.com.

"The idea is that they visit with all of our businesses down here and they get to know what restaurants have good spaces for rehearsal dinners, they visit some of the merchants, like flower shops," said Cara Bove, administrative and events assistant for the Downtown Wheaton Association. "We want to open their minds, to see all that downtown Wheaton has to offer."

More than 20 businesses in



SCOTT SANDERS/ssanders@dailyherald.com



SCOTT SANDERS/ssanders@dailyherald.com

downtown are participating, including shops like Moore Toys & Gadgets, which might offer unique items that could be used at a bachelorette party or as wedding favors.

"It's a day for them to target a different customer," she said. "It's nice to have a focused group coming in, so they can set up special displays for them, offer them special deals and coupons and things like that."

Bove said the wedding walk and opening of the wedding exhibit "happened by chance." To encourage brides to visit the exhibit, it has been listed as a stop on their map.

"I think they'll enjoy some of the history. It's entertaining," Downing said. "We tried to showcase how wedding

Wedding dresses dating to the 1860s, above, and historic photos, left, are part of a new exhibit at the DuPage County Historical Museum called *Wedding Traditions Unveiled*. The exhibit opens Saturday. The Downtown Wheaton Association's Wedding Walk is also taking place that afternoon.

Watch the video



Curator Ashley Downing discusses the DuPage County Historical Museum's new exhibit, at dailyherald.com/more.

traditions and courtship changed through time."

The exhibit is split into various decades, starting in the late 1800s, where black and white photos, detailed marriage licenses and the most well-preserved dresses are on display.

Aside from admiring the artifacts, which also include jewelry, headpieces and a cake topper, visitors will learn interesting facts as they browse the cases, including the ways couples would sometimes form around the turn of the century.

"A lot of these people, they'd actually do newspaper advertisements," Downing said. "They would write and say, 'This is such a great connection, let's get engaged.' So they would actually never meet and get engaged to a person they

If you go

What: Wheaton Wedding Walk

Where: More than 20 stops in downtown Wheaton; starts at AlphaGraphics, 128 N. Main St.

When: 11 a.m. to 3 p.m. Saturday, Oct. 17

Cost: Free

Info: downtownwheaton.com or (630) 682-0633

What: Wedding Traditions Unveiled

Where: DuPage County Historical Museum

When: Exhibit preview, 6:30 to 8 p.m. Friday, Oct. 16; exhibit opening, noon to 4 p.m. Saturday, Oct. 17

Cost: \$20 per person or \$30 per couple for preview, with champagne toast and appetizers; exhibit opening is free

Info: dupagemuseum.org or (630) 510-4941

met over the newspaper. The newspapers actually started putting warnings out into those sections. Then you have today's online dating, where it's kind of the same thing."

Several decades later, social status began to correlate with the number of people you dated, Downing said.

"In the 1920s, it became a game," she said. "This was one of the few periods where you're not trying to find someone to marry, you're just finding somebody because you wanted to show off to all your friends."

DuPage County residents are invited to take part in the exhibit by submitting their wedding photos to the museum. Submissions will be entered into a drawing to win a two-hour rental of the museum and an overnight stay at a hotel.

Suburban Life

YOUR NEW WHEATON LEADER

Council hears plans for street improvements

By NATHAN LURZ
nlurz@shawmedia.com

WHEATON – Since early 2014, the City Council has pointed to the Wheaton Downtown Strategic and Streetscape Plan as the future of the downtown area.

Now, the council may be taking its first steps toward making the first of the improvements a reality.

Two architecture firms gave presentations on their proposals for the first phase of the improvements near Liberty Drive and Main Street on the south side of the railroad tracks in downtown Wheaton during the council's Oct. 12 planning session.

The city issued a request for proposal to 30 design firms in July, and staff whittled down the responding firms to the Lakota Group and Design Workshop, the firm responsible for the overarching strategic and streetscape plan.

The firm that receives the bid later this month will provide three designs for the council to choose from with a range of different costs.

Design Workshop presented first, detailing a plan that includes a large permanent structure for the French Market constructed in several steps;

See IMPROVEMENTS, page 13



UNVEILED

New nuptial exhibit to open at DuPage County Historical Museum

PAGE 3

Curator Ashley Downing fluffs a 1957 wedding gown that is part of the DuPage County Historical Museum's new "Wedding Traditions Unveiled" exhibit.

David Toney - For Shaw Media

3

NEWS

CD • Thursday, October 15, 2015 • mysuburbanlife.com • Suburban Life WTL

Celebrating wedding traditions

SUBURBAN LIFE MEDIA

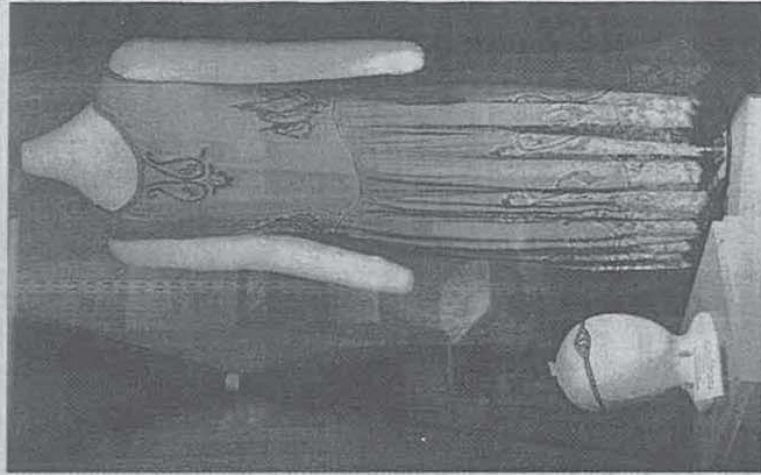
WHEATON - The DuPage County Historical Museum will explore 100 years of courtship, nuptials, strange customs, dresses and more for its new "Wedding Traditions Unveiled" exhibit.

Featuring items and history from the Victorian Era to World War II, the exhibit opens to the public Oct. 17. Those looking to take in the exhibit beforehand can purchase a ticket to a special engagement party preview the night before with a champagne toast and appetizers. The event will run from 6:30 to 8 p.m. To attend, visit dupagemuseum.org.

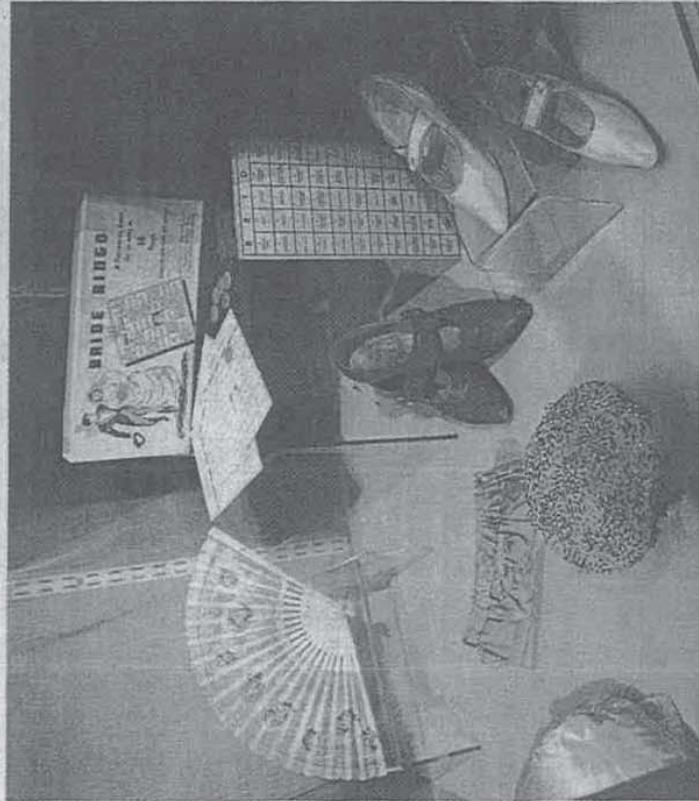
RIGHT: The "Wedding Traditions Unveiled" exhibit features a variety of wedding memorabilia, including bridal shoes, at the DuPage County Historical Museum in Wheaton.

Photos by David Toney - For Shaw Media

LEFT: A cake topper and jewelry are a few items on display as part of the DuPage County Historical Museum's new "Wedding Traditions Unveiled" exhibit.



A 1920s dress (above) is on display at the historical museum. One tradition involves family and friends giving a teacup from their set (left) to help the bride begin her collection.



Pathe Murray, Broker, J.D., MBA
pmurray@koenguborff.com
 (630) 842-6063

Divine Danada West Home!
 1757 Lucky Debonair, Wheaton - \$599,900

Simply perfect and gracious home. Almost 4,000 sqft of lofty, light filled space. Fabulous layout offers excellent entertaining space. KIT opens to awesome Sunroom. Don't miss

Walk to Town, Train and Schools!
 1005 Warrenville Rd, Wheaton - \$475,000

Beautifully updated home nestled on a lush, mature lot. Flexible floor plan! Unique lines and architecture—3 fireplaces including the MBRIKIT w/SS applis.



Museum to replace roof after donation

DuPage County businessman's \$200,000 gift replaces state grant tied up in budget battle

By **NATHAN LURZ**
nlurz@shawmedia.com

WHEATON — The DuPage County Historical Museum finally will be able to protect what museum staff members call its largest artifact: its building.

Despite obtaining a state grant to repair a leaking roof in 2014, funding never materialized for the \$600,000-plus project.

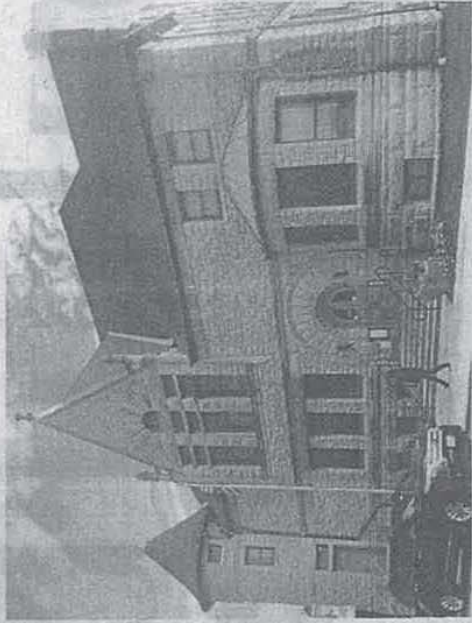
However, thanks to a \$200,000 donation to the museum foundation from Dan Goodwin and his company, Inland Real Estate Group, during the Oct. 13 DuPage County Board meeting, the museum finally will be able to replace it with historically accurate red tile roof.

Goodwin said he learned about the museum's problem after being awarded its inaugural Making a Historical Difference Award in 2014. While touring the facility, he spoke with staff and saw leak damage around the otherwise sound historic 1891 building and roof tiles that had fallen into the surrounding alley.

"This is our heritage, this is the legacy that we're going to leave behind, and it's a wonderful place and it's still a nascent entity," he said.

The DuPage County Historical Museum in downtown Wheaton will be getting a new roof thanks to a \$200,000 donation from area businessman Dan Goodwin with Inland Real Estate Group.

Nathan Lurz
nlurz@shawmedia.com



After speaking with the museum and the Wheaton Park District, which oversees the museum, Goodwin suggested changing the materials used in the project to cut the total cost down to \$471,000. In addition to his donation and \$5,000 from the local Women's Auxiliary group, the county has agreed to cover the remaining expense as the owners of the building.

Park District Executive Director Mike Benard thanked Goodwin and the county for their support for the museum, calling the donor a "hero."

"Your commitment to your county's history is a commitment to your county's future, and I congratulate you all for being a part of it," he said.

DuPage County Board Chairman Dan Cronin said Goodwin's unique involvement was a prime example of the importance of bringing in interested corporate and personal partnerships, especially as state funding dwindled.

Michelle Podkova, museum manager and educator, said the improvement would be a sigh of relief among museum staff now that its artifacts would be even better protected.

Goodwin said he only agreed to the public ceremony to serve as an example to others across the county who might be willing and able to step up and help an organization in need.

"I believe in public-private partnerships," he said. "We in business must do what we can to help our county." Construction will start as early as this week on the six-to-eight-week project, Benard said.



Dan Goodwin

WHEATON Suburban Life

Wheaton Suburban Life is the successor publication to the Wheaton Leader.

Suburban Life Media
mysuburbanlife.com/wheaton

Call: 630-368-1100
Newsroom fax: 630-969-0228
1101 W. 31st St., Suite 100, Downers Grove, IL 60515
Missed delivery & customer service: 630-368-1144

MEET THE NEWS TEAM



Mary Beth Versaci, web editor
630-427-6249
mversaci@shawmedia.com

Nathan Lurz, reporter
630-427-6264
nlurz@shawmedia.com

Jason Rossi, sports editor
630-427-6271
jrossi@shawmedia.com

Administration

Laura Burke, general manager
630-427-6213, lburke@shawmedia.com

Bill Korbel, local sales manager
630-427-6230, bkorbel@shawmedia.com

Dave Lemery, editor
630-427-6250, dilemery@shawmedia.com

To place an ad:

Display: 630-427-6230
Legal notice: 630-427-6275
publicnotice@mysuburbanlife.com

Classified:

Service Directory: 630-427-6238
Recruitment & General Classified: 877-264-2527

General information

CORRECTIONS

DAILY HERALD
10/29/15

If you go

What: DuPage County Historical Museum Guild's 32nd annual Holiday Bazaar

When: 10 a.m. to 3 p.m. Saturday, Nov. 14

Where: DuPage County Historical Museum, 102 E. Wesley St., Wheaton

Admission: Free

Info: (630) 510-4941 or dupagemuseum.org

Holiday bazaar supports museum

BY BRETT PETO

DuPage County Historical Museum

Hundreds of years ago women would get together in quilting bees, creating blankets and other needed supplies for their families and communities. The DuPage County Historical Museum Guild is kind of like that.

The members meet throughout the year, sewing and crafting holiday gifts and seasonal decor to help the museum by selling their wares.

The 32nd annual Holiday Bazaar is 10 a.m. to 3 p.m. Saturday, Nov. 14, at the DuPage County Historical Museum, 102 E. Wesley St., Wheaton. Admission is free.

The bazaar will include homemade Christmas ornaments, wreaths and greenery,

See **GUILD** on **PAGE 2**

Guild: Bazaar helps fund history museum

Continued from Page 1

scrapbook cards, notepads and crochet items. In addition to the crafts for sale during the bazaar, the vocal group Beyond Glee will perform from 12:30 to 1:30 p.m.

For several decades, guild members have dedicated their time and talents to creating sewing projects and crafts for the annual event while building their friendships with each other.

Guild Chairwoman Mary Udelhofen says she feels like her role is small. But, in reality, these women work hard all year long, meeting every other week to work and

socialize.

"We can see our contribution in very tangible ways throughout the museum," Udelhofen said.

Throughout the years, the guild has raised more than \$55,000 for the museum. The funds support the museum's ongoing work, including renovations to the historic building, purchasing supplies for public programs and events, and accommodating storage needs for the museum's collection.

"The guild is really inspiring," said Michelle Podkova, manager and educator at the museum. "They are such a

great group of women who develop a close friendship and enjoy sewing together. In many ways, their group reminds me of the quilting bees that occurred in the 1800s — sewing together to create items for their community while enjoying the companionship."

The guild is seeking new members to help sew, crochet, knit and craft new items in the following year. The guild meets the second and fourth Mondays of the month from 1 to 3 p.m. For information, call Podkova at (630) 510-4956.

For information about the

bazaar or the museum, call (630) 510-4941, visit dupagemuseum.org, or stop in at 102 E. Wesley St., Wheaton.

ND

Daily Herald

dh dailyherald.com

We're online

f Facebook: www.facebook.com/DailyHeraldFans

t Twitter: [@dailyherald](https://twitter.com/dailyherald)

p Pinterest: pinterest.com/thedailyherald/

Contact us

Mail: 4300 Commerce Court,
Lisle, IL 60532

General info: (630) 955-3500

Customer service

Home delivery, missing paper:
(before noon) (847) 427-4333
Before noon to speak to a rep
24/7 Automated system available

Back issues:
(before 11 a.m.) (847) 427-4405

Classified: (847) 427-4444;
class@dailyherald.com

Any form of Classified Advertising can be submitted in person, or online at dailyherald.com in our classified section.

Display ads: (847) 427-4624;



COURTESY OF WHEATON PARK DISTRICT

DuPage County Historical Museum Guild hosts its 32nd annual Holiday Bazaar from 10 a.m. to 3 p.m. Saturday at 102 E. Wesley St., Wheaton. Items for sale include homemade Christmas ornaments, wreaths and greenery, scrapbook cards, notepads, and crochet items. The vocal group Beyond Glee performs from 12:30 to 1 p.m. Free admission. Info: (630) 510-4941 or dupagemuseum.org.

Mark your calendar Things to do in DuPage County

Submitted | posted: 11/20/2015 8:59 AM

DuPage history museum wins state excellence award



The DuPage County Historical Museum recently won an Award of Excellence for its "Inheriting DuPage: A Family History" exhibit.

Daily Herald file photo

**By Brett Peto
Wheaton Park District**

Some historians say that history is using the past to make sense of the present. The [Illinois Association of Museums \(http://www.illinoismuseums.org/\)](http://www.illinoismuseums.org/) says the DuPage County Historical Museum is doing an excellent job of that.

The museum association honored the museum's exhibit "Inheriting DuPage: A Family History" with an Award of Excellence in September, and also recognized the [DuPage Society of Model Engineers \(http://dupagemuseum.org/model_engineers.htm\)](http://dupagemuseum.org/model_engineers.htm), which operates a train display at the museum, with a Gold Award for its 50 years of service.

"Inheriting DuPage" consisted of 300 objects from the more than 5,000 artifacts documenting the stories of five of DuPage County's founding families: the Torodes, the Fullers, the

Appendix 5: Marketing

Rodgers, the Plummers and the Thurstons. The artifacts were preserved by county resident Patricia Torode Vaillancourt Woodstrup and donated after she died in 2003.

"A lot of collections and donations to museums do not come in as complete and documented as this one," said Michelle Podkova, museum manager and educator. "They're not as large, they're not as all-inclusive for such a large number of family members, and many of them are just a piece here and there of something historically significant."

Mychal Brown, a volunteer in 2010 when she started documenting and cataloging the collection and now hired on as a museum assistant, was responsible for much of the exhibit.

"It's the largest donation we've ever received and a lot of it dates back to the early period of DuPage history, so it's very exciting," Brown said.

The exhibit's display coincided with the 175th anniversary of the county's founding.

Reviewers for the museum association "commended the museum on focusing on one family and telling the generational stories using the large collections of artifacts from one of its descendants," according to a letter announcing the award.

"It is a unique way to experience, learn and celebrate the 175th anniversary of the founding of DuPage County."

Another anniversary was celebrated this year: the 50th of the DuPage Society of Model Engineers, a nonprofit group separate from the museum that maintains and operates the HO-gauge model train on the museum's lower level.

Group members built the display in 1965 and have been its stewards since, running the trains for the public from 1:30 to 3:30 p.m. every third and fifth Saturday of the month.

The All Aboard train exhibit is on permanent display on the museum's lower level. "DuPage County Model Railroad: A Closer Look," a photograph-rich book of information about many sections of the model train, is for sale in the Museum Gift Shop.

"Inheriting DuPage: A Family History" was a temporary exhibit and recently came down to allow space for "Wedding Traditions Unveiled," an exploration of 100 years of courtship rituals and wedding traditions in the county. However, the museum maintains the artifacts of "Inheriting DuPage: A Family History" in its collections.

For information about the DuPage County Historical Museum, visit dupagemuseum.org (<http://dupagemuseum.org/>) or stop in at 102 E. Wesley St., Wheaton.

You May Like

Sponsored Links by Taboola

24 Overwhelming Images Showing The Effects Of Humans On Earth

DailyDisclosure

Illinois: Drivers Are Stunned By This New Rule

Provide Savings Insurance Quotes

Everything you have ever wanted to know about reverse mortgages. All o...

Yahoo

DuPage County | updated: 12/29/2015 11:59 PM

DuPage County Historical Museum getting new roof

Work being done to stop any leaks that would do damage in 1891 building



The DuPage County Historical Museum in downtown Wheaton is getting a new roof that curators say will look more like the original design.

Mark Black | Staff Photographer



Katlyn Smith

What's with all the scaffolding around the DuPage County Historical Museum?

From the stair tower to the sidewalks below, the downtown Wheaton building is encased in the structure.

It's not a major renovation, but replacing the roof on a building that dates to 1891 takes more than a couple of ladders.

Crews are navigating the steep, sloping roof, spires, the turreted tower -- all hallmarks of an architectural style adopted by Charles Sumner Frost when a distant relative of President John Quincy Adams hired him to design the building as a library.

Appendix 5: Marketing

Another Frost work? Just a little known destination called Navy Pier.

The existing, "brownish, grayish" roof isn't original to Frost's design. And it was nearing the end of its life. Even worse, curators were worried that a "few minor leaks" in the past could spring into a major problem for artifacts from across DuPage County inside.

"It will ease all of our minds to know that everything is brand new up there," said Michelle Podkova, the museum manager and educator.

After a state grant promised in 2014 fell through, the charitable arm of the Inland Real Estate Group Inc. donated \$200,000 and helped get the project off the ground. The DuPage County Historical Museum Guild contributed \$5,000, and the county is paying the rest of the bill, expected to cost a total of about \$450,000.

The work began late this fall, and now crews are tearing off the shingles and making repairs as needed underneath.

From there, the new shingles -- a shade of red that looks more like Frost's design -- will be installed.

And throughout the delicate process, the museum, owned by the county and run by the Wheaton Park District, will keep its normal hours.

Monday's ice and a wet December caused slight delays, Podkova said.

But the roof should be completed in the second or third week in January.

The finished product, she said, will make the museum even more eye-catching on the corner of Main and Wesley streets.

"It will make a drastic difference to the appearance of our building downtown," Podkova said.

Article Comments (0)

You May Like

Sponsored Links by Taboola

How I remember to tune in and pay attention to my kids

SheKnows

Unnerving Historical Photos That Will Leave You Speechless

Your Daily Dish

4 Cards With Jaw-Droppingly Long 0% Intro APR On Balance Transfers

LendingTree

New High Powered Flashlight Is Now Available in Illinois

TC 1200 Flashlight