

# 2024 AQUATICS ANNUAL REPORT



## CONTENTS

EXECUTIVE SUMMARY .....	2
HIGHLIGHTS .....	3
ATTENDANCE .....	6
TOTAL POOL PASSES SOLD.....	8
TOTAL PAID DAILY ADMISSION VISITS.....	8
COMBINED ATTENDANCE AND WEATHER .....	9
AQUATIC BUDGET ANALYSIS .....	10
FINANCIAL COMPARISON.....	11
CONCESSIONS .....	12
SWIM LESSONS .....	13
PART TIME WAGES .....	15
SUMMARY.....	17



# EXECUTIVE SUMMARY



Rice Pool and Water Park and Northside Family Aquatic Center operated from May 27<sup>th</sup> through Labor Day weekend. Both pools offer swim lessons, concessions, and a safe summer location for local family fun and recreation. Over the 2024 season, 120,270 patrons dove into our locations and enjoyed our facility amenities.

While Exceeding two Ellis & Associates audits and meeting standards on the third, the pools saw record numbers in Pool Pass sales. Both Rice and Northside experienced continued high attendance numbers in swim lessons, swim team and camp attendance both internal and external.

The financial strength of the 2024 season came evenly throughout the summer, with high temperature experienced consistently throughout the summer. Pool admissions staff played a vital role in selling pool passes to begin the season to families that were undecided or new community members. Revenue from Pool Passes, Daily Admissions, Swim Lessons, and Concessions were all up compared to previous years.

Wheaton Park District Staff are energized by the achievements of the 2024 season and remain committed to continuous improvement. By fostering innovation, prioritizing community, and empowering our amazing team, the Wheaton Park District Aquatics Department looks forward to another safe year of growth and success in serving our community.



# HIGHLIGHTS

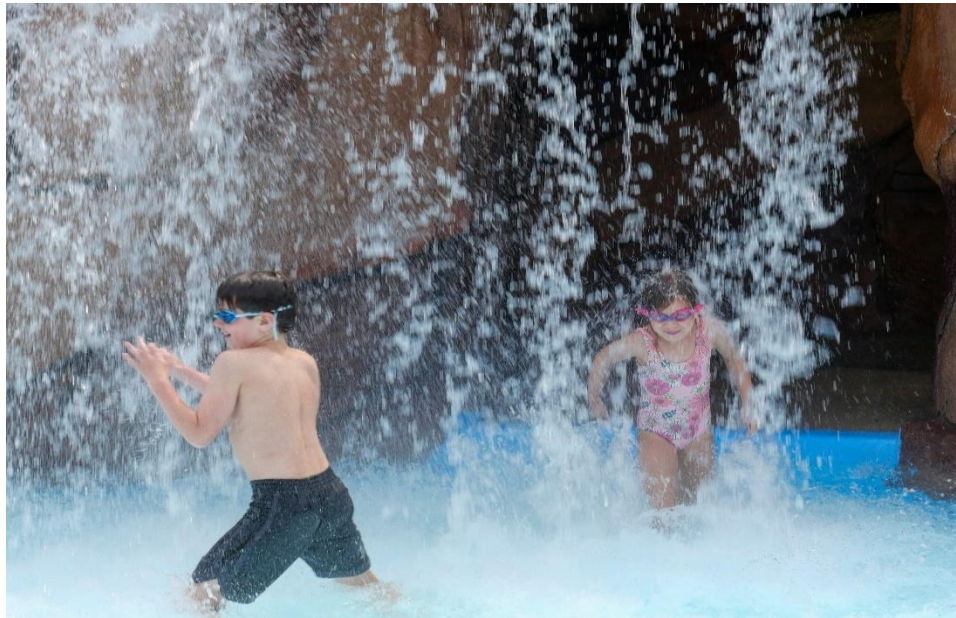
- Wheaton Park District aquatic facilities employed 254 individuals during the 2024 summer season; Rice Pool employed 187 while Northside Pool employed 76. 94% of the pool staff are high school or college aged.
- 115 total lifeguards were hired for both facilities, with 9 lifeguard hires resigning before trainings began, 5 candidates withdrawing from class, and 10 candidates not passing. There were a total of 91 lifeguards between both facilities by July 25<sup>th</sup> (35 at Northside and 56 at Rice). Total Lifeguard applicants were up from 2023 by 14 applicants, while Northside Pool increased in working lifeguards by 4 while Rice Pool increased by 11.
- A job at one of our aquatic facilities is a first time employment opportunity for most of our staff. Safety and customer service is the utmost priority. Weekly in-services and daily pre-shift meetings ensure our facilities' excellence. Lifeguards average over 110 hours of training, while water park and concessions staff average 30 hours of training per season. Sustained increases in preseason training were possible due to the later start of the season in 2024.
- Wheaton residents accounted for 86% of aquatic staff, resulting in approximately \$653,366 returned to the local economy through wages.



- The Wheaton Park District participated in the Ellis & Associates International Pool and Water Safety Lifeguard Training Programs. Through this program and certification agency, lifeguards are audited on an individual basis as well as through Team Management Rescues. Audits are done by Ellis & Associates representatives with lifeguards being scored on skills such as professionalism, personal safety, aquatic accident prevention, observational skills, managing aquatic emergencies and team rescues.
- Both Northside Family Aquatic Center and Rice Pool and Water Park received two "Exceeds" and one "Meets" on the 2024 audits for Ellis & Associates. Scores can be Exceeds, Meets, and Fails based on actions by lifeguards.



- A Thanksgiving Sale was offered November 20 to December 17. During the sale, 2,647 passes were sold at a 20% discount five months prior to opening day. During the winter 15% discount period (December 18 through January 15), 750 passes were sold. During the pre-season 10% discount period (January 16 to May 1), 1,435 passes were sold. Regular season rates began May 2. From May 1 throughout the 2024 season 3,254 passes were sold. A regular season resident family of 4 paid \$280, while a non-resident family of 4 paid \$386. **60% of total sales occurred during a discounted period.**
- Preseason sales were almost identical in 2024 compared to 2023 and remain a crucial component for pool revenue. With over half of all pool passes sold before the first drop of water enters the pool, preseason pool pass sales are instrumental in gaging the upcoming season.



- The swim lesson program experienced strong enrollment throughout the summer. Waitlists were cleared at both pools and included in classes, with over 2,000 swimmers participating in our life-changing lessons once again in 2024.
- The Parent and Tot program was successfully modified this summer to include Thursday evening classes and the Saturday class. The half-hour weekly lesson provided parents the opportunity to learn techniques to get their young children comfortable in water. Participation declined as the summer went on with lower July registration and attendance compared to June.
- The Barracuda Swim Team enrollment totaled 130 participants this season, which was an increase of 10 participants over 2023. We had returning head coach Mike Gasso and three assistant coaches, Hugh Farnum, Marin Czaplicki, and Holly Kirkman. Parents were exceptionally impressed with the coaching staff, and particularly praised Coach Gasso for his energy, attention to the swimmers, and positivity.



- The Barracudas Swim Team returned to the Western Suburban Swim Conference. The Conference ran with 6 teams this season, which included 6 “B” Team Duel Meets and 7 “A” Team Duel Meets. Our season concluded with the “A” Conference Meet hosted at Hinsdale on July 20<sup>th</sup>. The Wheaton Barracudas rallied to take SECOND in the conference.
- Wheaton is not scheduled to host a conference meet until the 2028 season.



- This was the fourth year Swim Instructors received uniforms for their time in the water. Parents liked the uniforms as it made it easier to distinguish who instructors were. The uniforms also acted as another form of marketing for our swim lessons.

- Daily safety checks continued to be implemented at both facilities in 2024. These daily checks ensure our ability to account for any children and guests accompanying them for the day and occur

roughly around 2pm each day. It also grants staff the opportunity to market swim lessons and concessions as well as issue heat advisories. This procedure is well received by patrons.

- Ice Cream sales at both pools totaled \$42,810 gross revenue, with Dippin’ Dots bringing in \$24,420 of that total. Rice Pool’s concessions sold a total of 6,073 units of French Fries over the summer, while both facilities sold 3,394 units of pretzels, and a total of 1,488 units of hot dogs.



# ATTENDANCE

## Rice Pool and Water Park

RICE POOL	2024 Season	2023 Season	2022 Season	Increase (Decrease) from last season	Percent Increase (Decrease) from last season
Pool Pass Visits	45,000	46,629	44,898	(1,629)	(3.4%)
Daily Admissions Paid	23,027	24,228	21,028	(1,201)	(4.9%)
Camps	6,303	4,504	4,146	1,799	39.9%
In-House Swim Lesson and Swim Team	9,078	9,745	12,230	(667)	(6.8%)
<b>Total</b>	<b>83,408</b>	<b>85,106</b>	<b>82,302</b>	<b>(1,698)</b>	<b>(2%)</b>
Days Open	82	79	79	3	3.8%
Avg. Daily Attendance	1,017	1,077	1,042	(60)	(5.6%)
Did Not Open	3	6	4	(3)	(50%)

- Rice Pool saw a decrease of (1,698) patrons compared to the 2023 season.
- Rice Pool's 2024 scheduled season operated with 3 more days of open swim days compared to 2023.
- Starting the season after Memorial Day allowed staff to more effectively train new staff and lifeguards. Returning staff from college received more trainings and enhanced preparation than previously possible.
- Camps at Rice saw an increase in camp attendance compared to the 2023 season as external camps continued to return to normalcy and traveled to outside facilities in 2024.



# ATTENDANCE

## Northside Pool

NORTHSIDE POOL	2024 Season	2023 Season	2022 Season	Increase (Decrease) from last season	Percent Increase (Decrease) from last season
Pool Pass Visits	19,707	16,876	17,189	2,831	16.8%
Daily Admissions	4,034	4,053	4,038	(19)	(0.5%)
Camp Visits	2,784	2,907	2,004	(123)	(4.2%)
In-House Swim Lesson and Swim Team	10,337	10,687	10,896	(350)	(3.3%)
<b>Total</b>	<b>36,862</b>	<b>34,523</b>	<b>34,127</b>	<b>2,339</b>	<b>6.8%</b>
Days Open	75	72	72	3	4.2%
Avg. Daily Attendance	491	479	474	12	2.5%
Did Not Open	2	5	3	(3)	(60%)



- Northside Pool saw an increase of 2,339 patrons from the 2023 season.
- Northside Pool's 2024 scheduled season operated with 2 additional days due to an earlier opening date and less rainout dates than 2023.
- Starting the season after Memorial Day allowed staff to more effectively train new staff and lifeguards. Returning staff from college received more trainings and enhanced preparation than previously possible.
- Pool Pass visitors at Northside Pool saw an increase of over 2,500 visits compared to the 2023 season.



# TOTAL POOL PASSES SOLD

Total Pool Passes Sold	2024 Season	2023 Season	2022 Season	Increase (Decrease) from last season	Percentage Increase (Decrease) from last season
Resident	<b>7,236</b>	7,388	7,882	(152)	(2.1%)
Non-Resident	<b>850</b>	864	872	(14)	(1.6%)
<b>Total</b>	<b>8,086</b>	8,252	8,754	(166)	(2%)

- Nonresident passes represented 10% of the total passes sold in 2024. This was a 1% decrease over 2023.
- Pool pass gross revenue increased \$21,664 from 2023.
- A Thanksgiving Sale was offered November 20 to December 17. During the sale, 2,647 passes were sold at a 20% discount five months prior to opening day. During the winter 15% discount period (December 18 through January 15), 750 passes were sold. During the pre-season 10% discount period (January 16 to May 1), 1,435 passes were sold. Regular season rates began May 2. From May 1 throughout the 2024 season 3,254 passes were sold. A regular season resident family of 4 paid \$280, while a non-resident family of 4 paid \$386.

# TOTAL PAID DAILY ADMISSION VISITS

Both Rice Pool and Northside Pool saw slight decreases in daily admissions in 2024 totaling a decrease of 1,220 compared to 2023.

Resident Daily Admission	2024 Season	2023 Season	2022 Season	Increase (Decrease) from last season	Percentage Increase (Decrease) from last season
Northside	<b>2,606</b>	3,244	3,140	(638)	(19.7%)
Rice	<b>14,751</b>	14,805	12,276	(54)	(0.4%)
<b>Total</b>	<b>17,357</b>	18,049	15,416	(692)	(3.8%)
Resident % of Total Daily Admission	<b>64%</b>	64%	65%		

Non-Resident Daily Admission	2024 Season	2023 Season	2022 Season	Increase (Decrease) from last season	Percentage Increase (Decrease) from last season
Northside	1,428	809	618	619	76.5%
Rice	<b>8,276</b>	9,423	7,850	(1,147)	(12.2%)
<b>Total</b>	<b>9,704</b>	10,232	8,468	(528)	(5.2%)
Non-Res % of Total Daily Admission	<b>36%</b>	36%	35%		

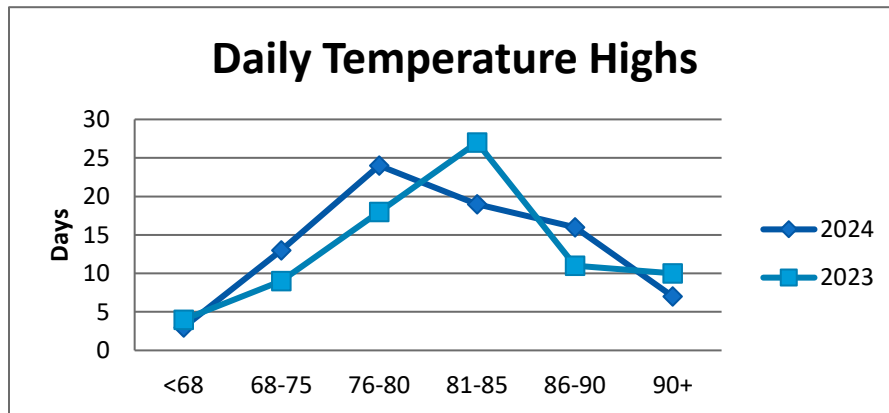
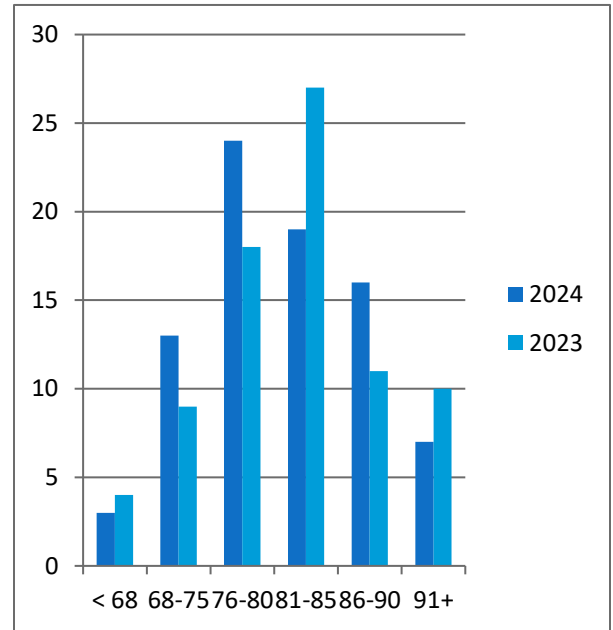
# COMBINED ATTENDANCE AND WEATHER

Average daily attendance between the facilities remained high in 2024 with additional open dates due to decreased inclement weather compared to 2023. Another important factor was continued increases in demand from patrons as competitor pools operated with shortened hours and closed earlier in the season due in part to staffing challenges and shortages.

Rice Northside Combined Attendance	2024 Season	2023 Season	2022 Season	Increase (Decrease) from last season	Percentage Increase (Decrease) from last season
Total Patrons	120,270	119,629	116,429	641	0.5%
Daily Average Patrons	1,467	1,514	1,474	(48)	(3.1%)

- 2024 recorded 42 days (51% of the season) over 80 degrees compared to 48 days (60%) in the 2023 season. Days under 75 degrees increased in 2024 to 16 days from 13 days in 2023.

Daily High Temp.	2024 Total Days in Temp. Range	2023 Total Days in Temp. Range	2024 Percent of Total Days	2023 Percent of Total Days
< 68	3	4	4%	5%
69-75	13	9	16%	11%
76-80	24	18	29%	23%
81-85	19	27	23%	34%
86-90	16	11	20%	14%
91+	7	10	9%	13%



# AQUATIC BUDGET ANALYSIS

Budget analysis is based on September 2024 financial status report and year end projections.

REVENUE	2024 Season Actual	2023 Season Actual	2022 Season Actual	Increase (Decrease) from last season	Percent Increase (Decrease) from last season
Rice Pool	817,299	765,972	703,717	51,327	6.7%
Northside	358,445	325,897	294,977	32,548	10%
<b>Total</b>	<b>1,175,744</b>	<b>1,091,869</b>	<b>998,694</b>	<b>83,875</b>	<b>7.7%</b>
EXPENSE	2024 Season Actual	2023 Season Actual	2022 Season Actual	Increase (Decrease) from last season	Percent Increase (Decrease) from last season
Rice Pool	1,005,605	913,838	776,324	91,767	10.0%
Northside	472,658	414,212	344,677	58,446	14.1%
<b>Total</b>	<b>1,478,263</b>	<b>1,328,505</b>	<b>1,121,001</b>	<b>149,758</b>	<b>11.3%</b>



## Aquatic Revenue & Expense Comparison

### 2024 vs 2023 Revenue Increased by \$83,875

- Pool Pass Sales Increased by \$21,644
- Daily Admission Increased \$13,753
- Swim Lessons Increased \$44,099
- Guest Passes Decreased (\$996)
- Concession Sales Increased \$2,450

### 2024 vs 2023 Expense Increased by \$149,758

- Aquatics Wages Increased by \$106,578
- Aquatics Supplies Increased by \$1,123
- Contractual Increased by \$23,845

NET Balance	2024 Season Actual	2023 Season Actual	2022 Season Actual	Increase (Decrease) from last season
<u>Rice Pool</u> Balance (Revenue over Expenses)	<b>(188,306)</b>	(147,866)	(72,607)	(40,440)
<u>Northside</u> Balance (Revenue over Expenses)	<b>(114,213)</b>	(88,315)	(49,700)	(25,898)
Total Balance (Revenue over Expenses)	<b>(302,519)</b>	(236,181)	(122,307)	(66,338)



# FINANCIAL COMPARISON

## Pool Pass Financials

REVENUE	2024 Budgeted Pool Pass Revenue	2024 Actual Pool Pass Revenue	Increase (Decrease) Budgeted Pool Pass Revenue	2023 Actual Pool Pass Revenue	Increase (Decrease) 2023 v. 2024 Actual	Percentage Increase (Decrease) 2023 v. 2024 Actual
Rice	350,000	<b>371,537</b>	21,537	<b>356,488</b>	15,049	4.2%
Northside	200,000	<b>182,996</b>	(17,004)	<b>176,381</b>	6,615	3.8%
Total	550,000	<b>554,533</b>	4,533	<b>532,869</b>	21,664	4.1%

- 2024 pool pass sales increased by \$21,664 compared to 2023 season.

## Guest Pass Financials

REVENUE	2024 Budgeted Guest Passes Revenue	2024 Actual Pool Pass Revenue	Increase (Decrease) Budgeted Pool Pass Revenue	2023 Actual Pool Pass Revenue	Increase (Decrease) 2023 v. 2024 Actual	Percentage Increase (Decrease) 2023 v. 2024 Actual
Rice	12,000	<b>10,637</b>	(1,363)	<b>11,455</b>	(818)	(7.1%)
Northside	5,000	<b>5,239</b>	239	<b>5,417</b>	(178)	(3.3%)
Total	17,000	<b>15,876</b>	(1,124)	<b>16,872</b>	(996)	(5.9%)

## Admission Financials

REVENUE	2024 Budgeted Daily Admission Revenue	2024 Actual Daily Admission Revenue	Increase (Decrease) Budgeted Daily Admission Revenue	2023 Actual Daily Admission Revenue	Increase (Decrease) 2023 v. 2024 Actual	Percentage Increase (Decrease) 2023 vs. 2024 Actual
Rice	210,000	<b>229,844</b>	19,844	<b>221,021</b>	8,823	4%
Northside	35,000	<b>36,859</b>	1,859	<b>31,929</b>	4,930	15.4%
Total	245,000	<b>266,703</b>	21,703	<b>252,950</b>	13,753	5.4%

- 2024 daily admissions increased \$13,753 compared to 2023.

## Combined Pool Pass, Admission, and Guest Pass

2024 Gross Actual Combined Admissions Revenue	2023 Gross Actual Combined Admissions Revenue	Increase (Decrease) 2024 vs. 2023	Percentage Increase (Decrease) 2024 vs. 2023
<b>837,112</b>	<b>802,691</b>	34,421	4.3%



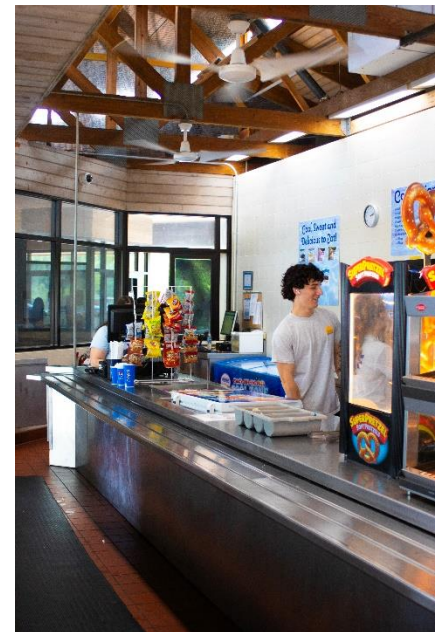
# CONCESSIONS

REVENUE	2024 Actual Concession Revenue	2023 Actual Concession Revenue	Increase (Decrease) From Last Season	Percentage Increase (Decrease) from last season
Rice	102,316	102,963	(647)	(0.6%)
Northside	18,780	15,683	3,097	19.7%
Total	121,096	118,646	2,450	2.1%

EXPENSES	2024 Actual Concession Expense	2023 Actual Concession Expense	Increase (Decrease) from last season	Percentage Increase (Decrease) from last season
Rice	66,423	59,973	6,450	10.8%
Northside	19,419	12,955	6,464	49.9%
Total	85,842	72,928	12,914	17.7%

2024 Concession Net	2023 Concession Net	Increase (Decrease) from last season	Percentage Increase (Decrease) from last season
35,254	45,718	(10,464)	(22.9%)

3 Concession Attendants cost the same in wages (\$38 per hour) in 2024 as 5 Concession Attendants in 2019 (\$39.25 per hour). 4 Concession Attendants in 2024 cost \$50.00 per hour in wages. Wage expenses increased to provide the expected customer service and to maintain the high volume associated with our revenue goals.

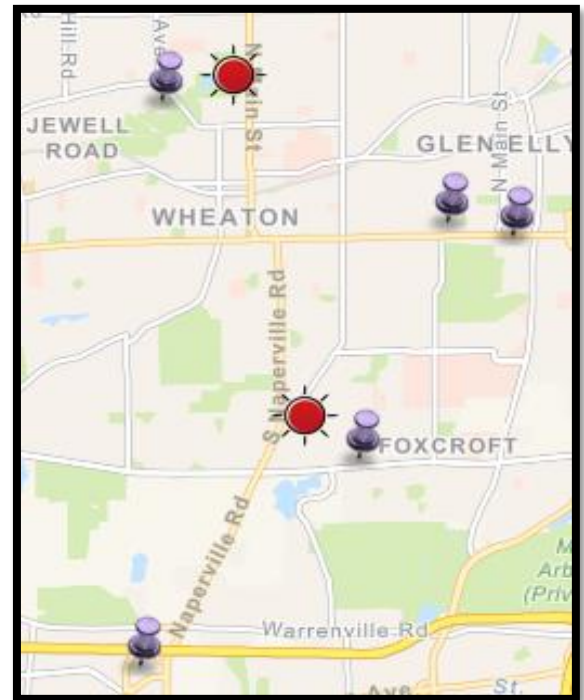


# SWIM LESSONS

In 2024, the swim lesson program operated at a 43% profit percentage.

SWIM LESSONS REGISTERED PARTICIPANTS	2024 Season	2023 Season	2022 Season	Increase (Decrease) from last season	Percentage Increase (Decrease) from last season
Northside Pool	1,119	1,180	1,117	(61)	(5.2%)
Rice Pool	1,266	1,279	1,090	(13)	(1%)
Total	2,385	2,459	2,207	(74)	(3%)

- Rice and Northside are proud to offer and provide swim lessons to the local community. This vital life skill is an important part of youth development and introduces families to safety around water.
- A switch to lower class ratios to provide closer instruction and higher quality classes was made last year based on parent feedback. This process continued this year and will continue into the future as it has been met with overwhelmingly positive reviews.
- Staffing challenges extended beyond lifeguard staff into swim instructors in 2024. In 2019, 87 Swim Instructors were employed by the Park District (56 at Rice, 31 at Northside). Post Pandemic seasons have seen drastically less Swim Instructor applicants, with a total of 66 Swim Instructors in 2023 (37 at Rice, 29 at Northside) and 67 in 2024 (39 at Rice, 28 at Northside).
- New and current competition in swim lesson programs is offered year-round at indoor swimming facilities. Local swim lesson competition includes Goldfish Swim School (3 miles away), Aqua-Tots Swim School (1 mile), British Swim School of DuPage (3 miles), Wheaton Sports Complex (1 mile), and B.R. Ryall YMCA (3 miles). Some competitors require payment plans mirroring subscriptions, making it difficult to pull students from their program during the summer months.



# SWIM LESSONS

REVENUE	2024 Budgeted Swim Lesson Revenue	2024 Actual Swim Lesson Revenue	Increase (Decrease) Budgeted Swim Lesson Revenue	2023 Actual Swim Lesson Revenue	Increase (Decrease) 2023 v. 2024 Actual	Percentage Increase (Decrease) 2023 v. 2024 Actual
Rice	60,000	<b>83,595</b>	23,595	<b>60,337</b>	23,258	38.5%
Northside	75,000	<b>101,795</b>	26,795	<b>80,954</b>	20,841	25.7%
Total	135,000	<b>185,390</b>	50,390	<b>141,291</b>	44,099	31.2%

- Enrollment in swim lessons and swim team decreased by (74) participants across both facilities in 2024.

EXPENSES	2024 Budgeted Swim Lesson PT Wages	2024 Actual Swim Lesson PT Wages	Increase (Decrease) Budgeted Swim Lesson Revenue	2023 Actual Swim Lesson PT Wages	Increase (Decrease) 2023 v. 2024 Actual	Percentage Increase (Decrease) 2023 v. 2024 Actual
Rice	40,000	<b>57,366</b>	17,366	<b>43,087</b>	14,279	33.1%
Northside	30,000	<b>47,064</b>	17,064	<b>42,840</b>	4,224	9.9%
Total	70,000	<b>104,430</b>	34,430	<b>85,927</b>	18,503	21.5%

Swim Instructor wages increased from \$10.50 to \$12.00 per hour in 2024. Due to minimum wage requirements, hourly wages will increase to \$13 in 2025, up \$1.00 from 2024.



2024 Net Balance Swim Lessons	2023 Net Balance Swim Lessons	Increase (Decrease) 2024 vs. 2023	Percentage Increase (Decrease) 2024 vs. 2023
<b>80,960</b>	55,364	25,596	46.2%



# PART TIME WAGES

## Rice Pool and Water Park

Rice Pool's 2024 scheduled season operated with 3 additional days compared to the 2023 season.

Rice Pool	Wage Range		2024 Budgeted PT Wages	2024 Actual PT Wages	Increase (Decrease) Budgeted PT Wages	2023 Actual PT Wages	Increase (Decrease) Actual 2023 vs. 2024	Percentage Increase (Decrease) 2023 vs. 2024
	Hourly Wage Under 18	Hourly Wage Over 18						
Preseason Maintenance	N/A	\$14	1,000	<b>2,068</b>	1,068	<b>815</b>	1,253	153.7%
Lifeguards	\$14**	\$15**	250,000	<b>257,147</b>	7,147	<b>232,520</b>	24,627	10.6%
Admissions	N/A	\$14	30,000	<b>52,845</b>	22,845	<b>32,549</b>	20,296	62.4%
Concessions	\$12	\$14	18,000	<b>22,176</b>	4,176	<b>18,812</b>	3,364	17.9%
Swim Instructors	\$12	\$14	40,000	<b>57,366</b>	17,366	<b>37,457</b>	19,909	34.7%
Private Swim	\$26	\$26	500	<b>132</b>	(368)	<b>1,050</b>	(918)	(87.4%)
Support Staff	\$12	\$14	75,000	<b>86,739</b>	11,739	<b>88,907</b>	(2,168)	(2.4%)
Asst. Pool Managers	N/A	\$16.45	20,000	<b>8,009</b>	(11,991)	<b>17,645</b>	(9,636)	(54.6%)
WPD CC Support	N/A	\$16	10,000	<b>9,904</b>	(96)	<b>9,722</b>	182	1.9%
Lifeguard Overtime			20,000	<b>30,317</b>	10,317	<b>36,769</b>	(6,452)	(17.5%)
Rice Totals			464,500	<b>526,703</b>	62,203	<b>476,246</b>	50,457	9.6%

\*\* Lifeguard wages were determined by experience. New lifeguards received \$14 per hour and returning lifeguards received \$15 per hour regardless of age.

- Lifeguard wages increased in 2024 due to the increase in minimum wage and increasing all lifeguards to the upcoming adult minimum wage rate. All Lifeguards made \$13 regardless of experience and age in 2023 compared to \$14 for new lifeguards and \$15 for returning lifeguards in 2024.
- Illinois state minimum wage increased for staff under 18 from \$10.50 to \$12 and from \$13 to \$14 for staff 18 and over in 2024. Support Staff saw the largest increase due to the amount of staff required and the greatest mixture of over and under 18 year old employees.
- 115 total lifeguards were hired for both facilities, with 9 lifeguard hires resigning before trainings began, 5 candidates withdrawing from class, and 10 candidates not passing. There were a total of 91 lifeguards between both facilities by July 25<sup>th</sup> (35 at Northside and 56 at Rice). Total Lifeguard applicants were up from 2023 by 14 applicants, while Northside Pool increased in working lifeguards by 4 while Rice Pool increased by 11.





## Northside Pool

Northside's 2024 scheduled season operated with 2 additional days compared to the 2023 season.

Northside Pool	Wage Range		2024 Budgeted PT Wages	2024 Actual PT Wages	Increase (Decrease) Budgeted PT Wages	2023 Actual PT Wages	Increase (Decrease) Actual 2023 vs. 2024	Percentage Increase (Decrease) 2023 vs. 2024
	Hourly Wage Under 18	Hourly Wage Over 18						
Preseason Maintenance	N/A	\$14	500	<b>1,008</b>	508	<b>364</b>	644	176.9%
Lifeguards	\$14*	\$15*	112,000	<b>137,543</b>	25,543	<b>105,950</b>	31,593	29.8%
Admissions	N/A	\$14	8,000	<b>9,647</b>	1,647	<b>7,799</b>	1,848	23.7%
Concessions	\$12	\$14	3,000	<b>6,097</b>	3,097	<b>1,437</b>	4,660	324.3%
Swim Instructors	\$12	\$14	30,000	<b>38,826</b>	8,826	<b>31,694</b>	7,132	22.5%
Private Swim	\$26	\$26	0	<b>0</b>	0	<b>0</b>	0	0
Support Staff	\$12	\$14	2,000	<b>3,422</b>	1,422	<b>1,028</b>	2,394	232.9%
Pool Managers	N/A	\$18	26,000	<b>17,872</b>	(8,128)	<b>25,412</b>	(7,540)	(29.7%)
Swim Team Coaches	\$15	\$18	9,000	<b>8,238</b>	(762)	<b>8,914</b>	(676)	(7.6%)
WPD CC Support	N/A	\$16	4,500	<b>3,790</b>	(710)	<b>4,133</b>	(344)	(8.3%)
Lifeguard Overtime			5,000	<b>6,582</b>	1,582	<b>7,277</b>	(695)	(9.6%)
Northside Totals			200,000	<b>233,025</b>	33,025	<b>194,008</b>	39,016	20.1%

\*\* Lifeguard wages were determined by experience. New lifeguards received \$14 per hour and returning lifeguards received \$15 per hour regardless of age.

- Lifeguard wages increased in 2024 due to the increase in minimum wage and increasing all lifeguards to the upcoming adult minimum wage rate. All Lifeguards made \$13 regardless of experience and age in 2023 compared to \$14 for new lifeguards and \$15 for returning lifeguards in 2024.
- 115 total lifeguards were hired for both facilities, with 9 lifeguard hires resigning before trainings began, 5 candidates withdrawing from class, and 10 candidates not passing. There were a total of 91 lifeguards between both facilities by July 25<sup>th</sup> (35 at Northside and 56 at Rice). Total Lifeguard applicants were up from 2023 by 14 applicants, while Northside Pool increased in working lifeguards by 4 while Rice Pool increased by 11.
- Lollapalooza, an annual 4 day music festival, also caused significant overtime at both facilities as Aquatics Staff fell directly into the event's target audience.



# SUMMARY



In 2025, Rice Pool will be entering its 36<sup>th</sup> year of operation, while Northside will enter its 32<sup>nd</sup> year.

The Wheaton Park District would like to thank Wendy Russell and Tom Grace for their combined 55 plus years of service to the Wheaton Community. They have been important staples at the Aquatic Facilities and continued their roles in 2024 as not only ambassadors of aquatic safety and swim lessons, but also as coaches and mentors to the young employees.

We will continue to navigate the increase in minimum wage for our part time staff along with continually increasing chemical and utility (water, electricity) costs and find creative ways to keep the aquatics facilities financially stable allowing us to continuously enhance them for the benefit of the community.

A challenging trend throughout the aquatics industry has been the lifeguard shortage. While the Wheaton Park District was not immune to this shortage, we have cultivated and maintained a higher return rate than many of our local competitors. The Aquatics Department has incentivized rehire candidates to complete their onboarding paperwork early with a \$50 bonus on their first paycheck if they manage to complete their work in mid-January, helping us anticipate our goals for hiring new staff and completing paperwork significantly before new hires begin their hiring process. The Human Resources Department has also reached out to local school districts and putting staff in front of potential new hires through mock interviews and career day activities to both cultivate interest in our jobs but also to create familiarity with potential candidates and eager employers.

Overview & Graphics	Seasonal Summary	Monthly Summary	Events
Events			
<ul style="list-style-type: none"> <li>▪ <b>August 27, 2024:</b> Stretch of Oppressive Heat Ends with Severe Storms</li> <li>▪ <b>July 15, 2024:</b> Derecho produces widespread wind damage and a record number of tornadoes in the local area</li> <li>▪ <b>July 14, 2024:</b> Line of storms produces swaths of wind damage and several embedded tornadoes</li> <li>▪ <b>July 13-14, 2024:</b> Significant flash flooding in Rockford and isolated wind damage from morning storms</li> <li>▪ <b>June 22, 2024:</b> Heavy rainfall, swaths of wind damage, and four EF-0 tornadoes in the Chicago suburbs</li> <li>▪ <b>June 16, 2024:</b> Thunderstorms and a gust front produce scattered wind damage in northern Illinois</li> <li>▪ <b>June 13, 2024:</b> Widespread wind damage in Ford County and an EF-1 tornado near Gibson City</li> </ul>			
NWS Chicago Science and Past Events Page			

The Aquatics Department continues to learn and grow as we navigate the global and local aquatic industry trends. We look forward to the 2025 season as recruitment begins in January 2025. Our commitment to living out the Park District's mission, vision and values in every interaction will continue to drive our success.

