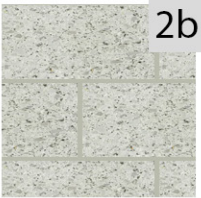


1  
Concrete Based Face Brick: Echelon Masonry "Harvard Brik" - Schoolhouse Red. Mortar Joint Color to Match Buff

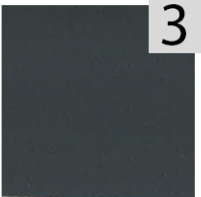


2 - Concrete Smooth Faced Stone Base and Stage Side Walls: Artisen Stone Veneers "Cordova Stone" Buff Smooth Texture (Acoustical Slots where Required) Mortar Joint Color to Match Buff

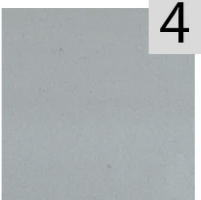
2a - Concrete Rock (Split) Faced Stone Walls - SW Elev: Artisen Stone Veneers "Cordova Stone" - Buff Rock Faced Texture. Mortar Joints to Match Buff



2b - Concrete Smooth Faced Stone Accent Bands and Parapet Caps: Artisen Stone Veneers "Cordova Stone" Alabaster Smooth Texture. Mortar Joint Color to Match Alabaster.



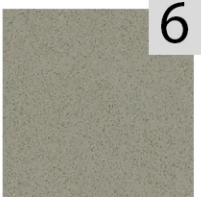
3  
Roof Fascia and Tube Steel: PAC-CLAD or Metal Era Two-Piece System. Standard Color: Graphite or Musket Grey. Tube Steel High Performance Paint: Color to Match



4  
Door Frames / Side Lights: Clear Anodized Storefront Frame. Bronze Tinted Insulating Glass on Exterior Pebble Texture FRP Doors. Gray Color to Match Frames



5  
Stage Surround: Nichiha Panels "Designer Series" Snow or Glacier, Smooth Texture. Attempt to Match Surface 2b Color



6  
Roof Deck Canopy (Underside), Painted Steel at Seating Truss and Columns: New Millennium "Form + Shape" "Architectural Deck Ceiling System" Flat, Ribbed, Lineal Plank, Smooth Surface Panels. Deck Smooth Surface Texture. Colors to Match PAC-CLAD Slate Grey or Granite

