

Wheaton Park District Memorial Park Memorial Plaza Narrative

JULY 2019



Wheaton Park District

Memorial Park

Memorial Plaza Narrative

One of the focal elements of the planned Memorial Park plan is a new memorial plaza collecting, organizing, and presenting existing and new memorial elements in the park.

The plaza is oriented east/west, with the existing World War II plaque located on the east wall of the Lubko Center remaining and acting as a terminus to the view west. Adjacent to the World War II plaque will be a series of five new plaques, recognizing the five branches of the military. The view east from the plaza is punctuated with a new flag pole feature, with night up-lighting.

The plaza itself is defined by a series of paving bands that alternate between red brick and tinted concrete. The thirteen bands are intended to reference the thirteen stripes on the American flag. They also establish a timeline with stone blocks etched with a year, placed at the transition from one paving band to another. The dates start at the west, with the birth of the Nation in 1776 and continue through the plaza in 20-year increments up to the year 2020.

Wheaton Park District

Memorial Park

Memorial Plaza Narrative

Framing the paver plaza are dark granite seatwalls on both the north and the south. In addition to providing a place to sit within the plaza, these seatwalls will have sandblasted inscriptions recognizing the major wars and conflicts that the United States was involved in. The inscriptions will be placed on the face of the wall, located appropriately on the timeline. The wall will break in two locations to allow for the existing Korean and Vietnam War memorial stones to be placed along the timeline. Additional inscriptions will be included that identify key dates in the history of Wheaton.

Wheaton Park District

Memorial Park

Memorial Plaza Narrative

The following is the draft descriptions that will be finalized before the pieces are fabricated:

1775-1783	American Revolution
1812-1815	War of 1812
1837-1838	Erastus Gary, Jesse Wheaton, and Warren Wheaton travel from New England and claim hundreds of acres
1846-1848	Mexican American War
1859	Wheaton Incorporated as a Village
1861-1865	U.S. Civil War
1867	Wheaton designated as DuPage County Seat
1890	Wheaton Incorporated as a City
1898	Spanish American War

Wheaton Park District Memorial Park Memorial Plaza Narrative

1914-1918	World War I
1921	Wheaton Park District Incorporated
	Memorial Park purchased from Judge Elbert Gary
1939-1945	World War II
1950-1953	Korean War
1960-1975	Vietnam War
1990-1991	Persian Gulf War
2001-	Afghanistan War
2003-2011	Iraq War

Wheaton Park District Memorial Park Memorial Plaza Narrative

Medal of Honor Recipients from Wheaton

James Howard Monroe 1944-1967 (Vietnam)

Robert James Miller 1983-2008 (Afghanistan)

Wheaton Park District

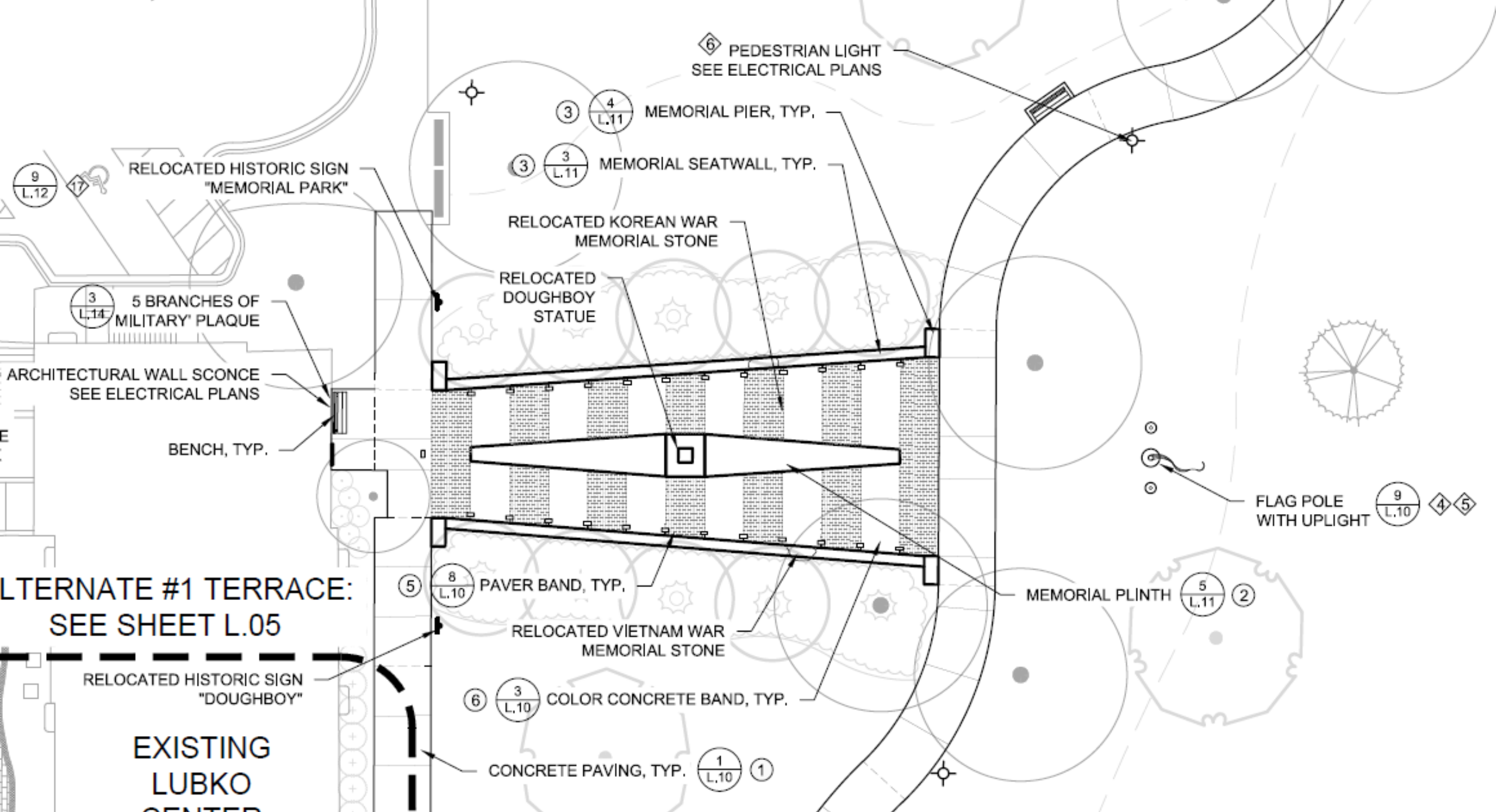
Memorial Park

Memorial Plaza Narrative

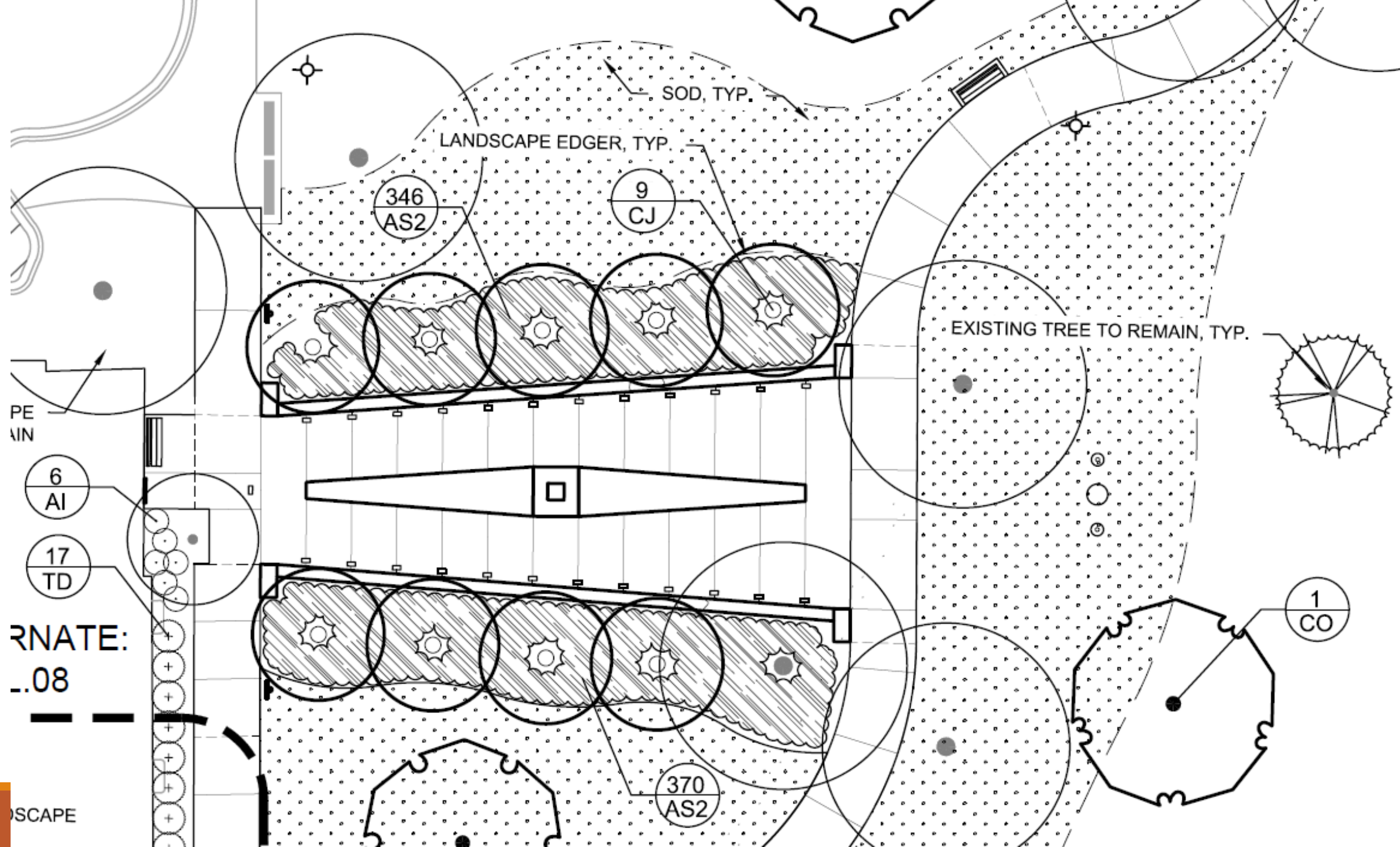
The seatwall will have an LED strip light hidden under the overhang of the cap which will provide soft, indirect lighting of the wall and plaza at night.

The central feature of the plaza will be the relocated Doughboy statue on a granite plinth. The Doughboy, like the other elements, will be located appropriately on the timeline. Extending to the east and west of the statue, there will be a sloped and tapered granite feature. This feature will have a polished black granite on the top, creating a reflective surface, enhancing views of the Doughboy. Skateboard deterrents are worked into the design of both the plinth and the seatwall to avoid damage from skateboarders.

Outside of the plaza to the north and south, will be a formal allée of trees creating shade for the plaza as the trees grow, and providing some buffering of the plaza from the other parts of the park.



ALTERNATE #1 TERRACE:
SEE SHEET L.05



RNATE:
..08

SCAPE

Wheaton Park District Memorial Park Memorial Plaza Narrative

Landscape Legend

9 CJ – Katsura Tree

716 AS2 – Summer Beauty Allium

6 AI – Black Chokeberry

17 Td – Dense Yew