

The background features abstract, overlapping green geometric shapes, primarily triangles and polygons, in various shades of green, creating a modern and dynamic visual effect.

# Memorial Park Renovations

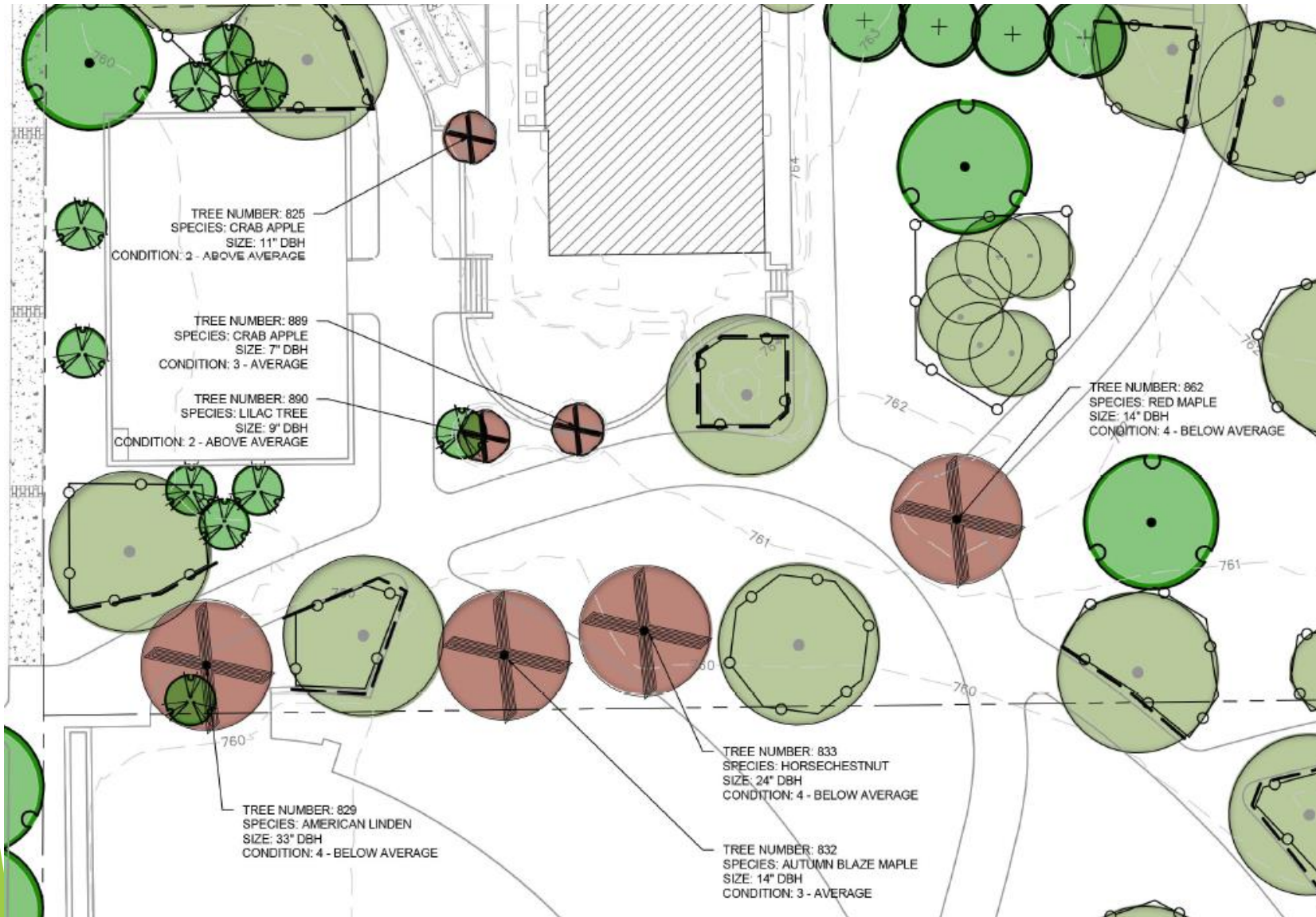
January 9, 2019

# Memorial Park Renovations

- ▶ Agenda for this evening
  - ▶ Landscape plan including new plantings as well as information about removals
  - ▶ Stormwater Progress
  - ▶ Programming Plans - Existing vs. Proposed
  - ▶ Park Access/Parking
  - ▶ Bandshell Revisions
  - ▶ Materials Selection Examples
  - ▶ Next meeting - February ?

[illegible]

# Landscape Plan - Trees





# Landscape Plan - Trees



# Landscape Plan - Trees

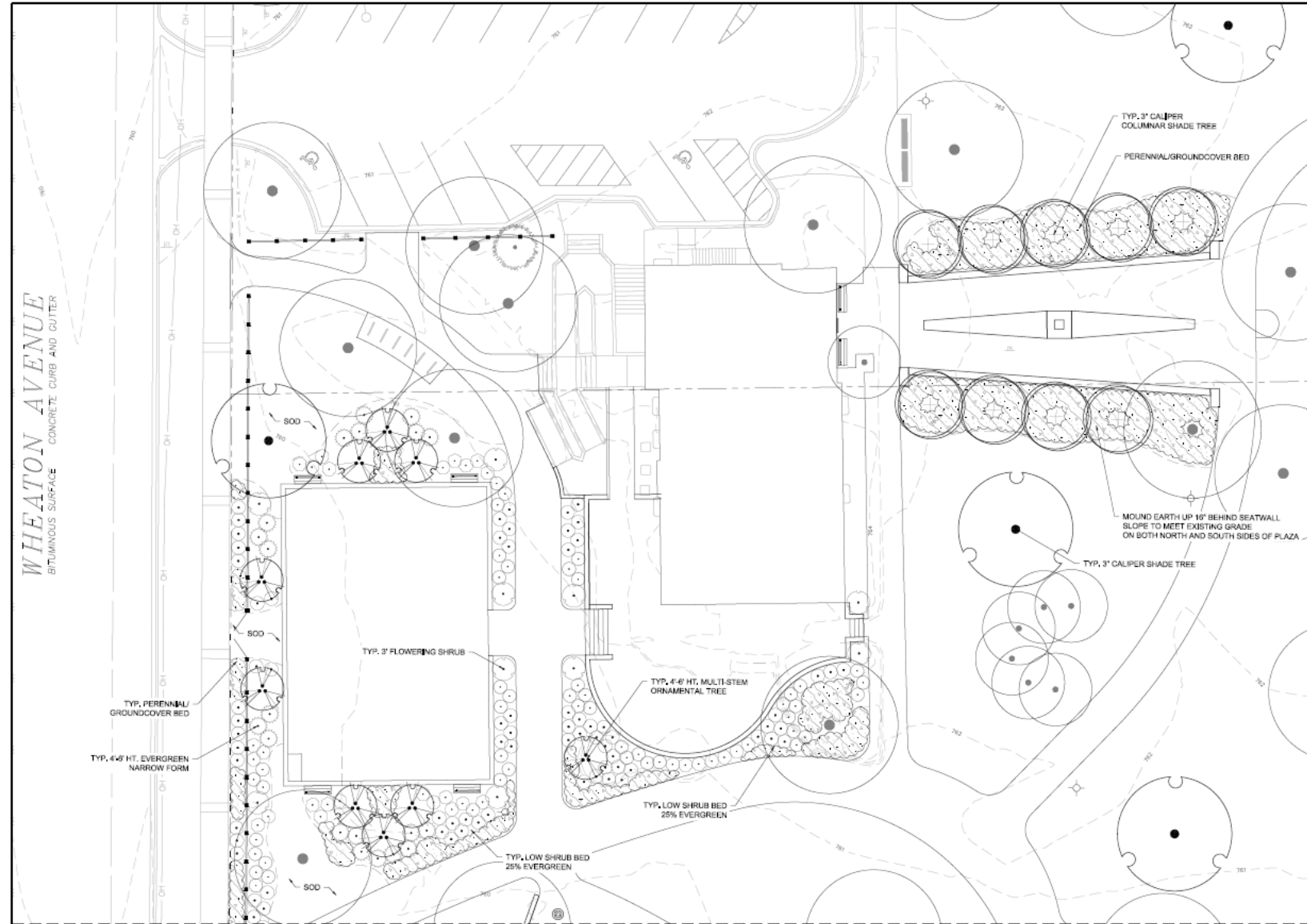




# Landscape Plan - Trees

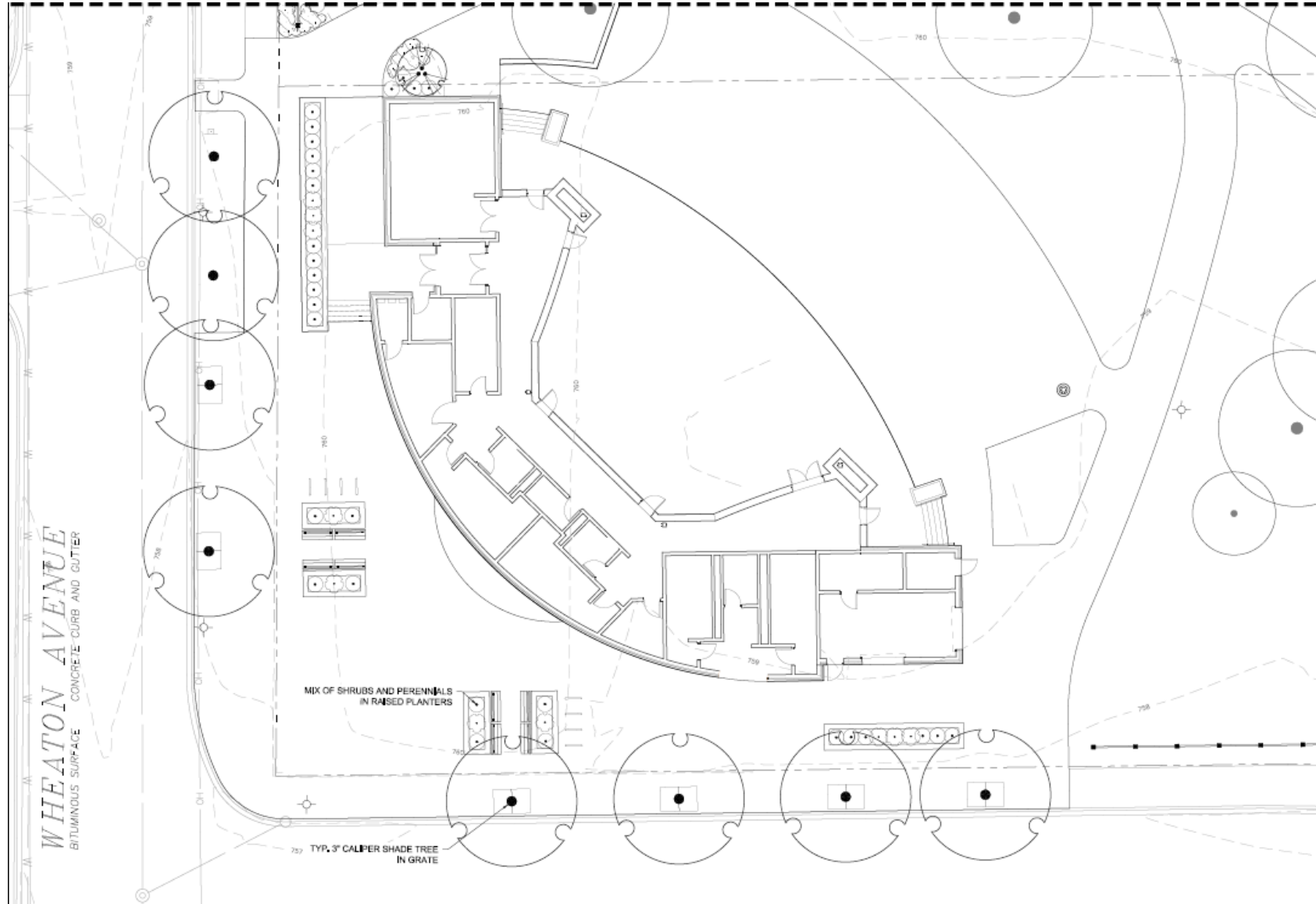


# Landscape Plan





# Landscape Plan

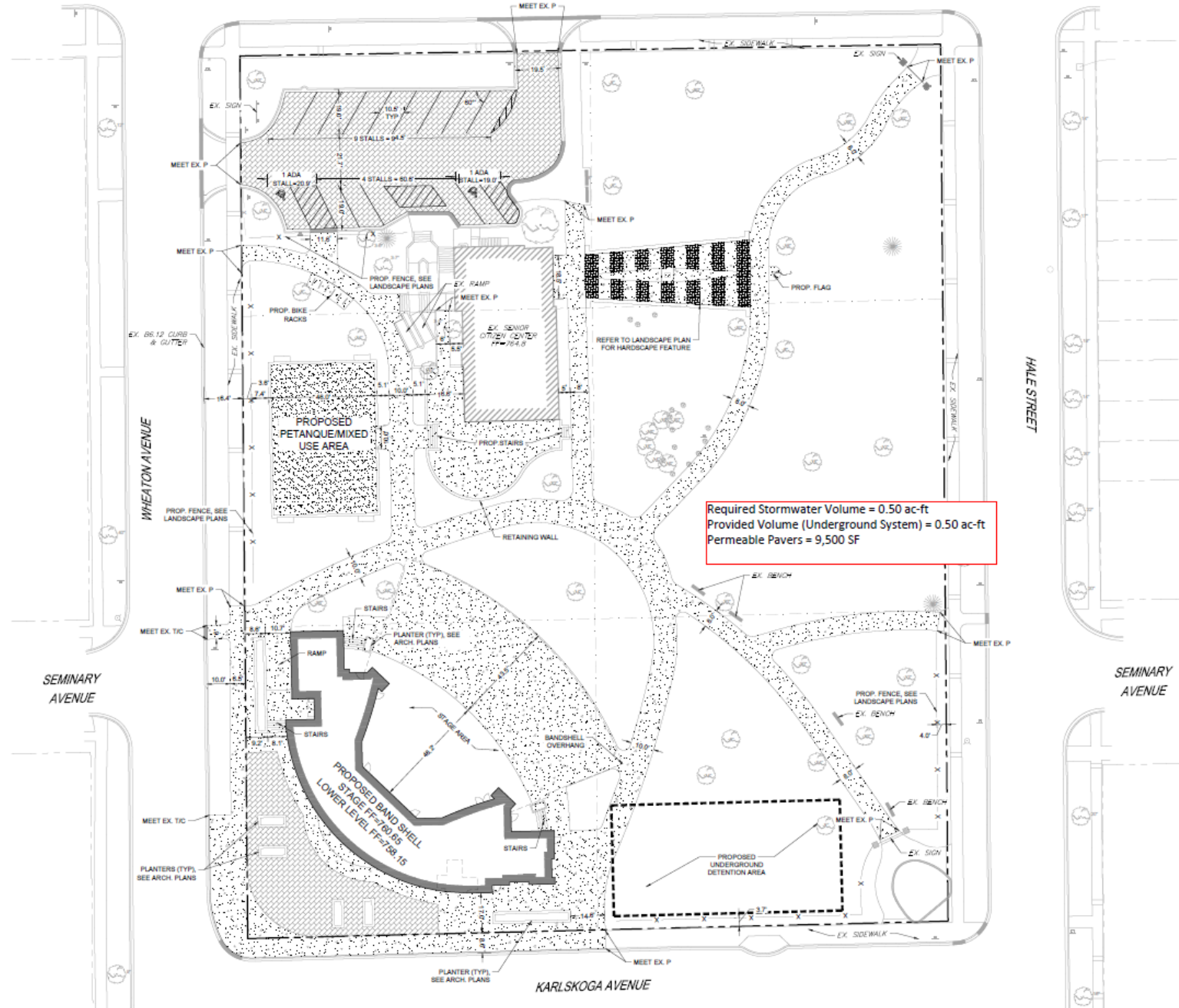


# Stormwater Planning

- ▶ Permeable pavement
- ▶ Detention Requirements
- ▶ Native Plantings/Urban Planter Boxes
- ▶ DuPage Water Quality Grant/OSLAD Grant



UNION AVENUE



| PAVEMENT LEGEND |  |
|-----------------|--|
|                 | POC SIDEWALK                           |
|                 | PERMEABLE PAVERS                       |
|                 | DECORATIVE PAVERS, SEE LANDSCAPE PLANS |
|                 | GRAVEL AREA                            |

| PARKING SUMMARY |    |
|-----------------|----|
| STANDARD STALLS | 13 |
| ADA STALLS      | 2  |
| TOTAL           | 15 |



Copyright © 2018  
 williamsarchitects.com

**Memorial Park**  
**Art Sweet Memorial Bandshell**  
 208 W. Union Ave.  
 Wheaton, IL 60187

|         |             |
|---------|-------------|
| WS No.  | 2018-001    |
| Date    | 22 JUL 2018 |
| Drawn   | AME         |
| Checked | AME         |

| REVISION | DATE | DESCRIPTION |
|----------|------|-------------|
|          |      |             |

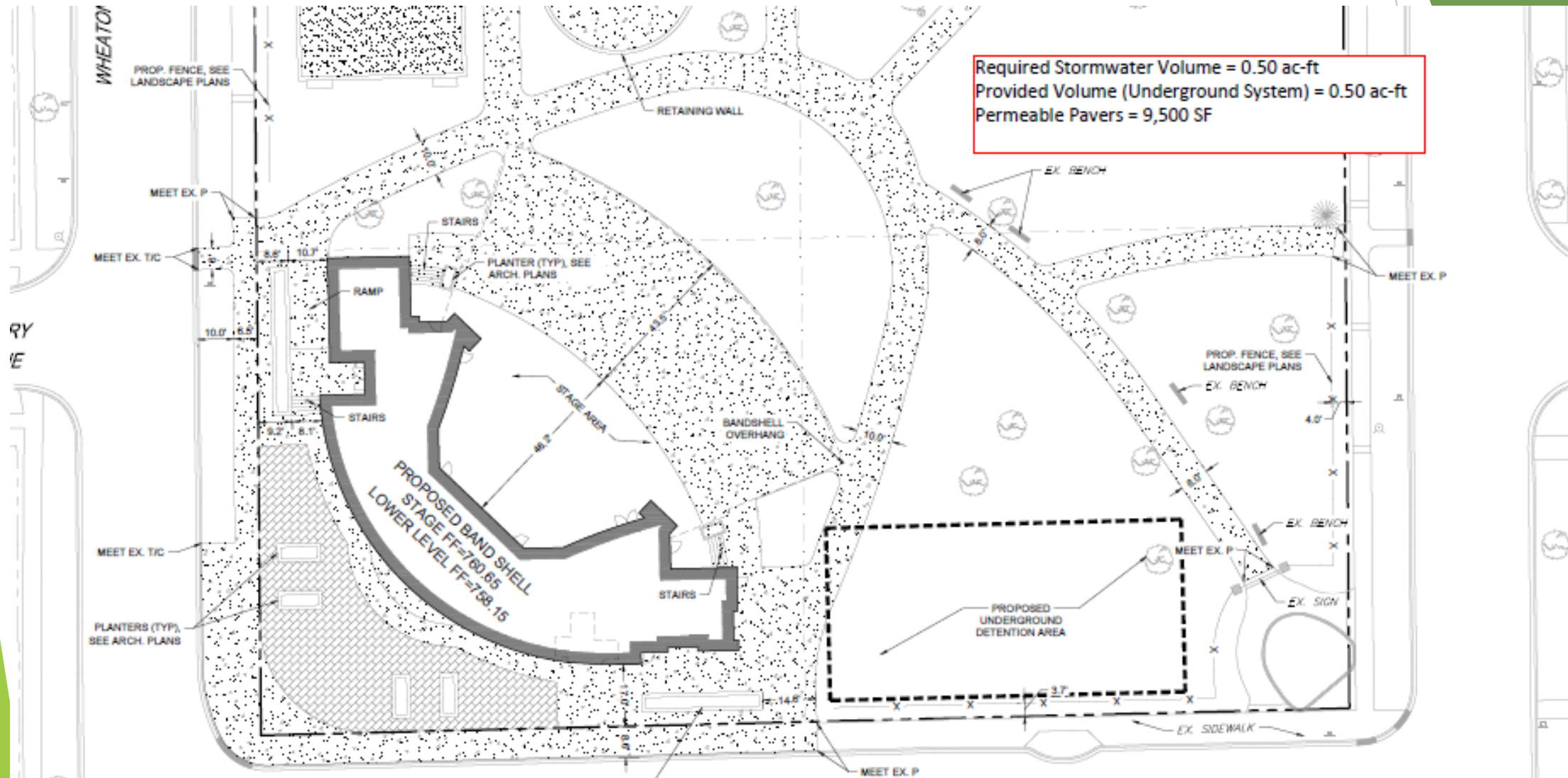
**WILLIAMS ARCHITECTS**  
 ARCHITECTURE | PLANNING | INTERIORS  
 200 First Southwest, Suite 800, Iowa, IA 50201  
 Phone: 515-251-5112 / Fax: 515-251-1220

GRAPHIC NORTH

**SITE LAYOUT PLAN**

**C1.2**  
 NOT FOR CONSTRUCTION

# Stormwater Detention





# Programming

## ► Existing Events / Program / Activities:

- Fun Run in Color
- Misc School - Easter Egg Hunts/Art Walk
- Taste of Wheaton/Run for the Animals
- Municipal Band
- Bible Studies/Church Services
- Monday Entertainment in the Park
- Brewfest/Corporate rental
- Misc City - National Night Out, Bike Festival, Festival of Cultures
- Shakespeare in the Park
- Oktoberfest

UNION AVENUE

WHEATON AVENUE

SEMINARY AVENUE

HALE STREET

KARLSKOGA AVENUE

Required Stormwater Volume = 0.50 ac-ft  
 Provided Volume (Underground System) = 0.50 ac-ft  
 Permeable Pavers = 9,500 SF

**PAVEMENT LEGEND**

- PCC SIDEWALK
- PERMEABLE PAVERS
- DECORATIVE PAVERS, SEE LANDSCAPE PLANS
- GRAVEL AREA

**PARKING SUMMARY**

|                 |    |
|-----------------|----|
| STANDARD STALLS | 13 |
| ADA STALLS      | 2  |
| TOTAL           | 15 |

**WILLIAMS ARCHITECTS**  
 ARCHITECTURE PLANNING INTERIORS  
 1000 N. MICHIGAN AVE. SUITE 1000  
 CHICAGO, IL 60610  
 TEL: 312.527.1234 FAX: 312.527.1235  
 WWW.WILLIAMSARCHITECTS.COM

**GRAPHIC NORTH**

**SITE LAYOUT PLAN**

**C1.2**

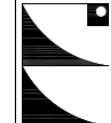
**NOT FOR CONSTRUCTION**

**Memorial Park  
Art Sweet Memorial Bandshell**  
208 W. Union Ave.  
Wheaton, IL 60187

|                 |             |
|-----------------|-------------|
| Y&R No.         | 2011-6-048  |
| Due to          | 12 DEC 2018 |
| Dr. with        | A.M.S.      |
| C. Faculties of | WZS         |

[illegible]

**WILLIAMS**  
**ARCHITECTS**  
ARCHITECTURE | PLANNING | ACQUISITION | INTERIORS  
500 Park Boulevard, Suite 902, Jersey, NJ 07103  
Phone 630-227-1212 / Fax 630-227-1220



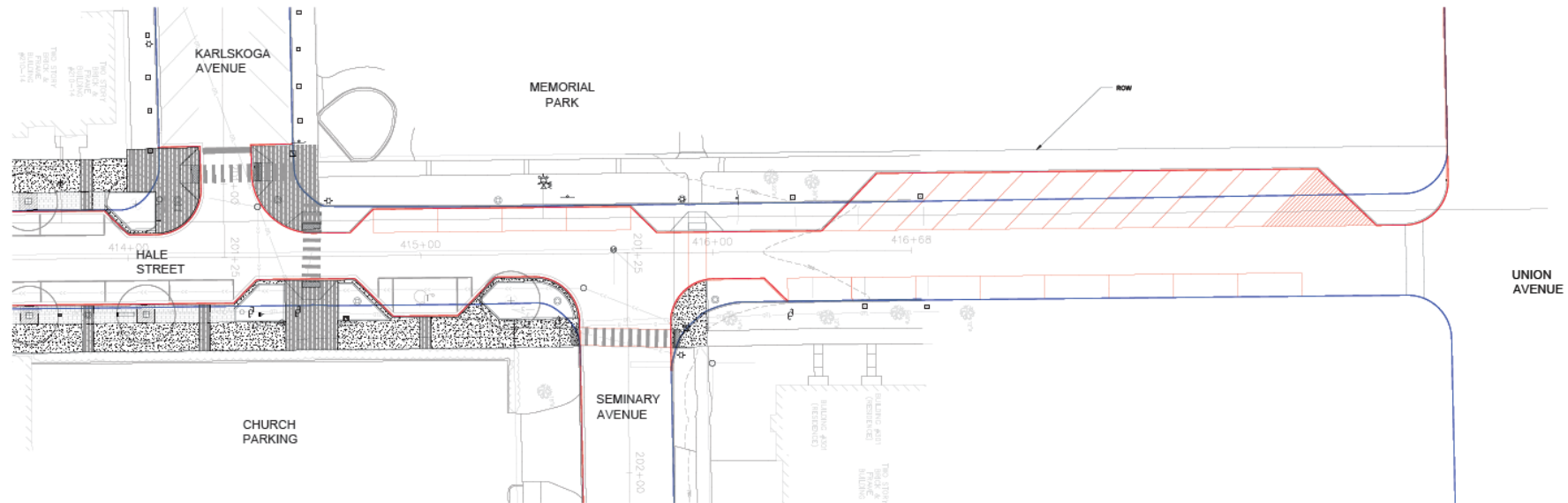
**SITE LAYOUT  
PLAN**

C1.2

NOT FOR  
CONSTRUCTION



# Park Access/Parking



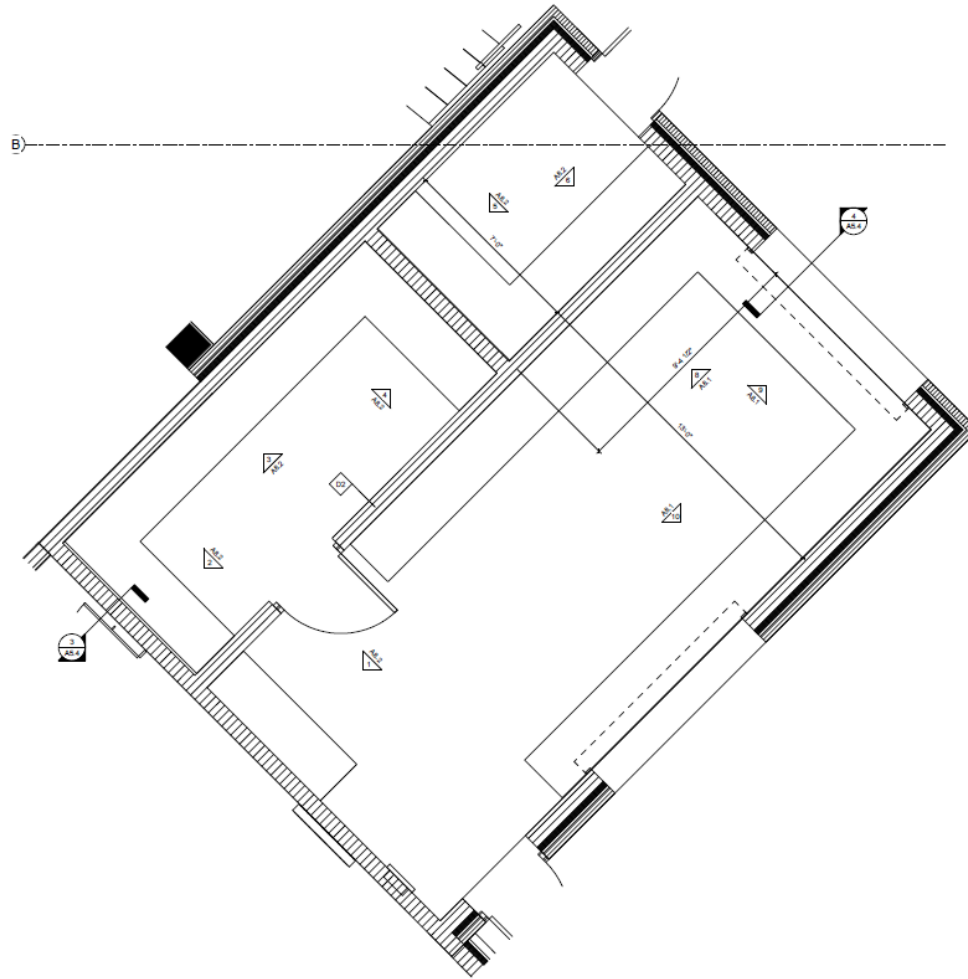
**PARKING**  
 WEST SIDE - KARLSKOGA TO UNION  
 EXISTING: 10  
 PROPOSED: 16 (15 IF YOU WOULD LIKE ONE TO BE ADA)  
 EAST SIDE - SEMINARY TO UNION  
 EXISTING: 9  
 PROPOSED: 8 (TO KEEP 30' CLEARANCE FROM X-WALK AT UNION)

**LEGEND**  
 — Existing Curb Location  
 — Proposed Curb Location



This architectural floor plan illustrates the interior layout of the Los Angeles Music Center. The plan is semi-circular, with a central corridor (CIRCULATION 019, 1267 SF) running horizontally. To the left of the corridor are several rooms: BAND STORAGE (008, 518 SF), REST (010, 111 SF), REHEARSAL (011, 46 SF), STORAGE (013, 46 SF), MECHANICAL (012, 210 SF), ELEC (021, 46 SF), and two DRESSING ROOMS (017 and 018, each 214 SF). To the right of the corridor are: PARK STO. (009, 96 SF), CONCESSION (002, 222 SF), WOMEN (004, 175 SF), FAMILY RR (003, 62 SF), MEN (005, 167 SF), and another CIRCULATION area (020, 139 SF). The plan also shows a STAGE (011, 3005 SF) at the top center. Various rooms are labeled with their room numbers and square footages. The plan includes a grid system with letters A through F and numbers 1 through 5. A 'ROOF ABOVE' label is at the top. The plan is oriented with a north arrow pointing towards the top right.

# Concessions







# Bandshell - Audio Visual

- ▶ Fixed system
- ▶ Ability to bring in special equipment
- ▶ Projection capabilities
- ▶ Remote speakers

# Material Selections



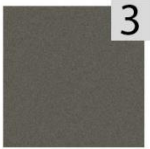
1

Face Brick: Match Existing at  
SE Entrance and Mary Lubko Center



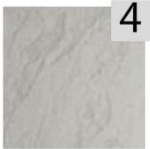
2

Cut Stone



3

Building Fascia / Bandshell Fascia



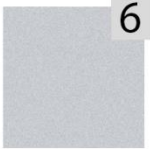
4

Fiber Cement Panel



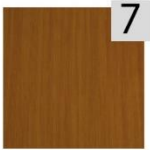
5

Stage Surround Panel



6

Window Frames / Column Cover



7

Bandshell Canopy / Building Soffits



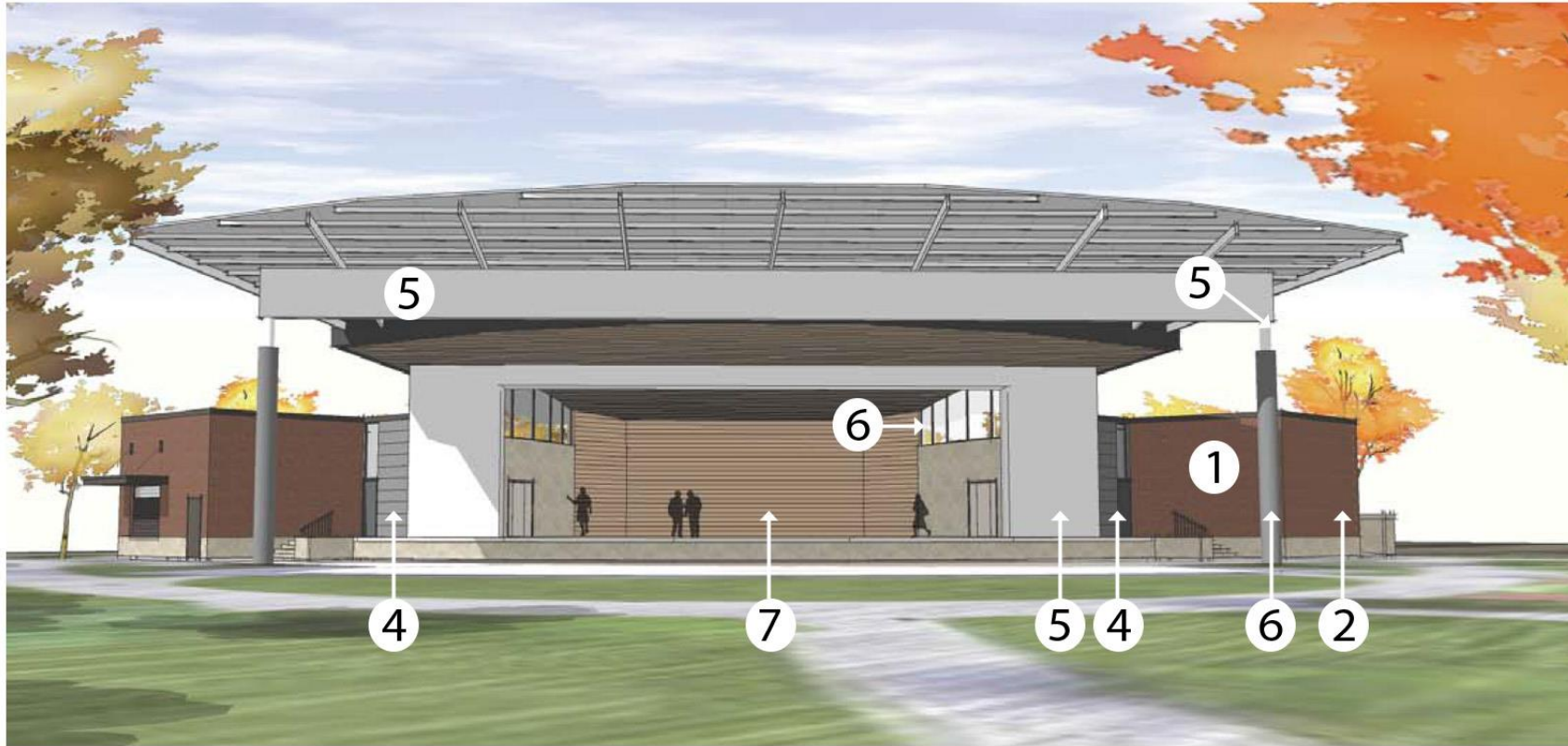
Sample Project - Metal Façade System



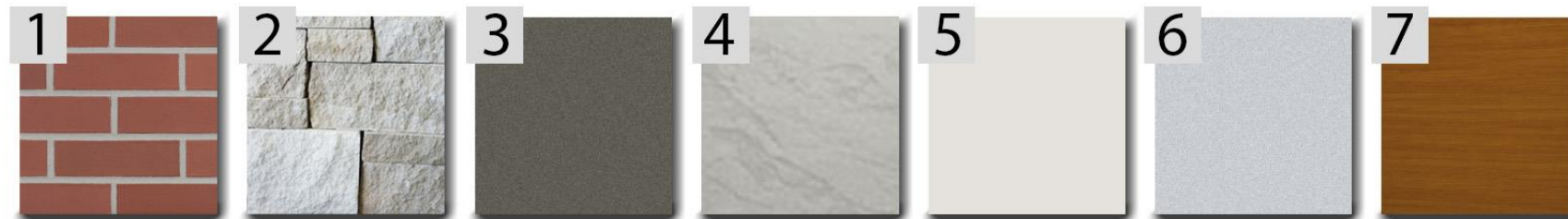
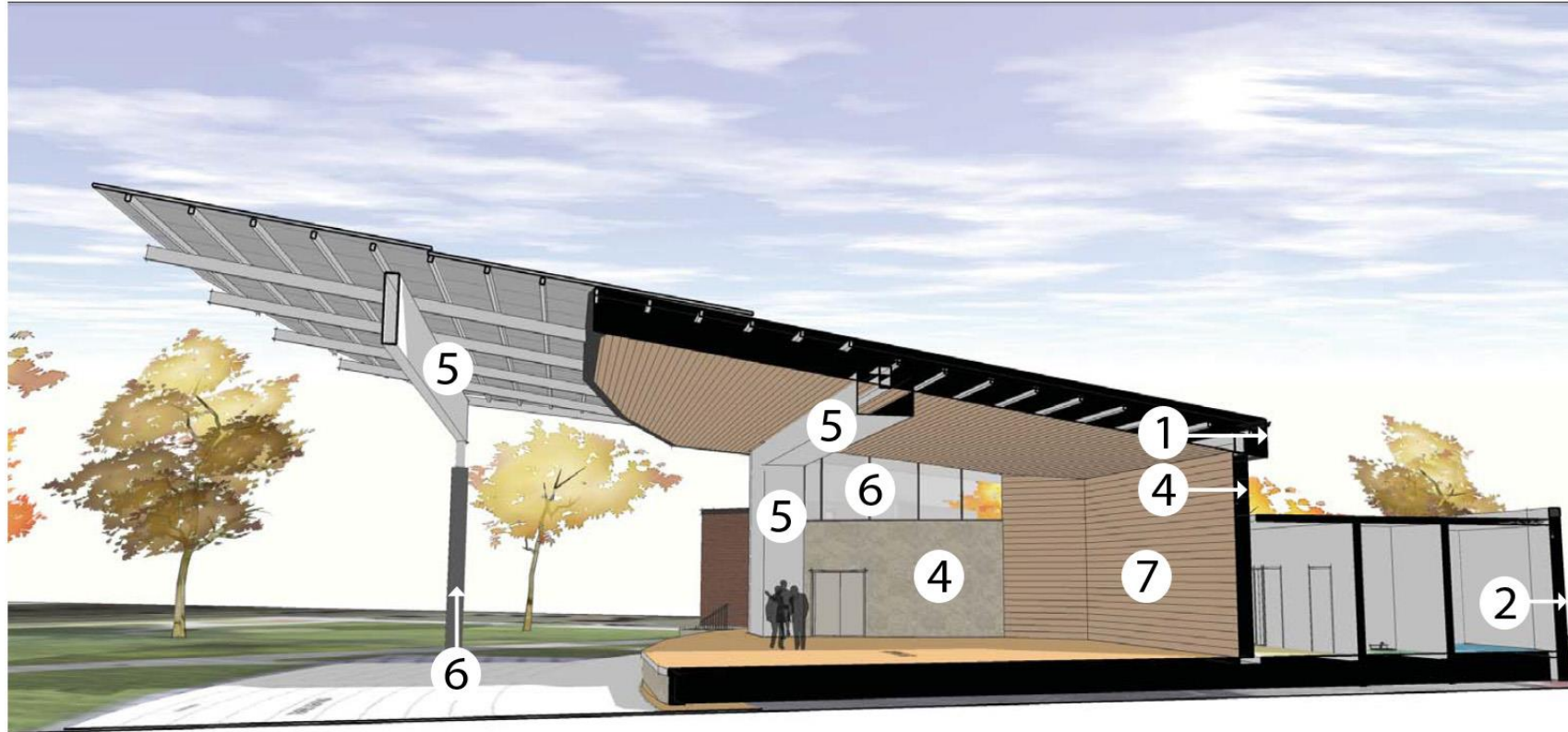
Sample Project - Stone Veneer



# Material Selections

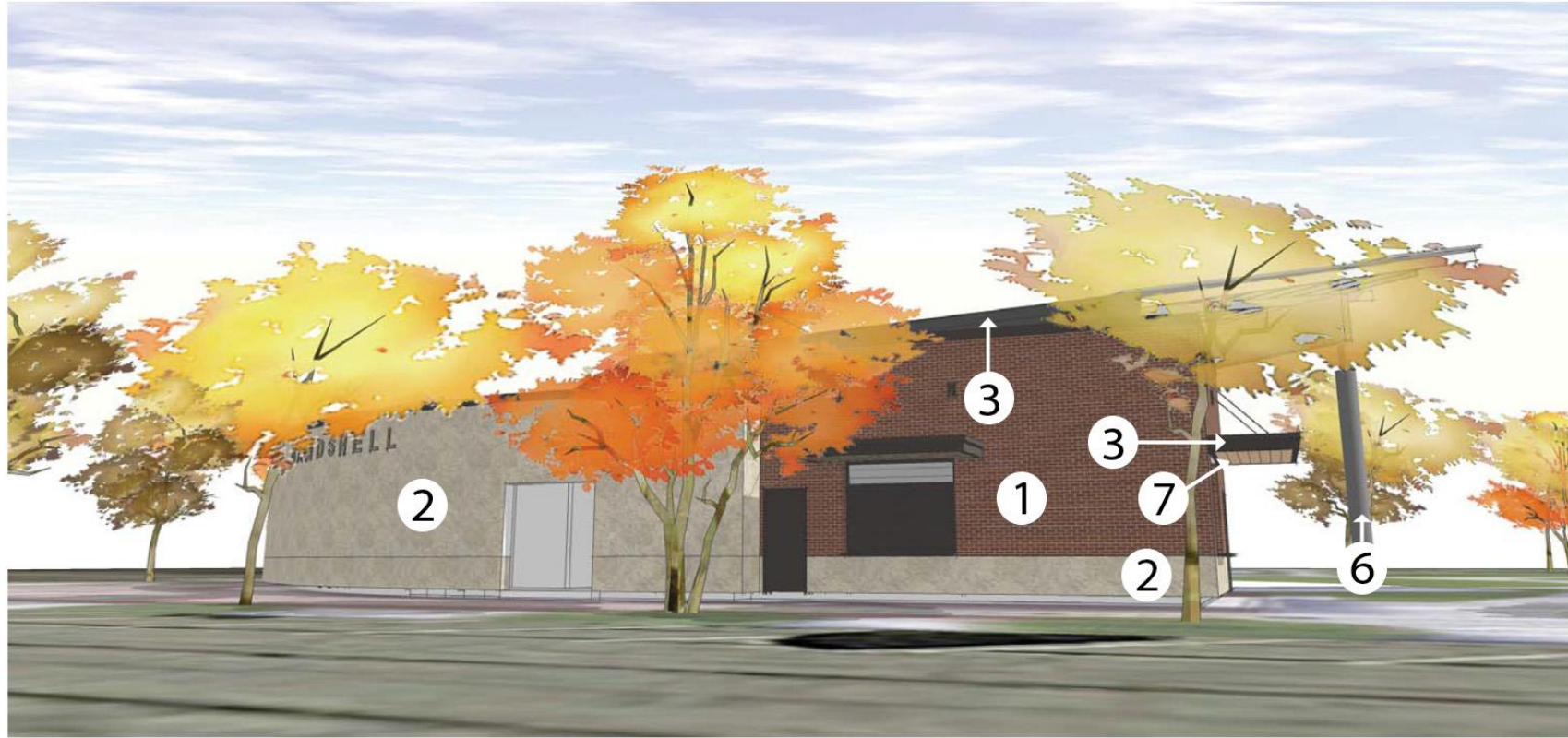


# Material Selections



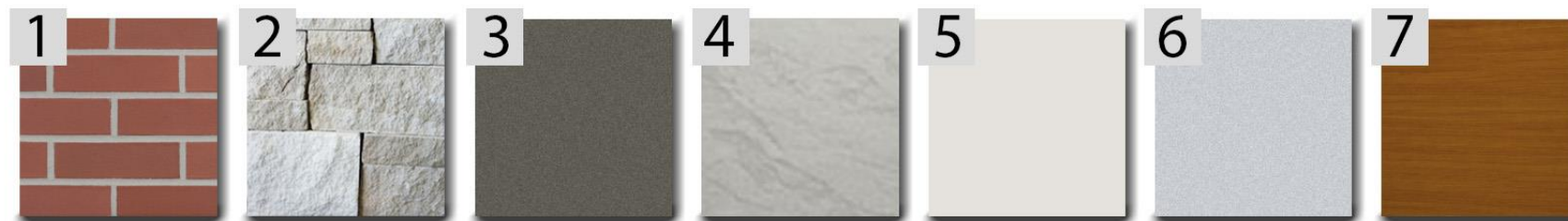


# Material Selections





# Material Selections



# Next Steps

- ▶ Budget Review
- ▶ Special Use Permit
- ▶ Grant Notices
- ▶ Building Permitting
- ▶ Bidding
  
- ▶ Questions
- ▶ Next Meeting