

The background features abstract, overlapping green geometric shapes in various shades of green, creating a modern, layered effect. The shapes are primarily triangular and polygonal, with some areas having a fine grid texture.

Memorial Park Renovations

April 2, 2019

Memorial Park Renovations

- ▶ Agenda for this evening
 - ▶ Budget Overview
 - ▶ Bandshell Revisions
 - ▶ Material Changes
 - ▶ Tree Removal Plan
 - ▶ Memorials
 - ▶ Programming Plans - Existing vs. Proposed
 - ▶ Next meeting - June?

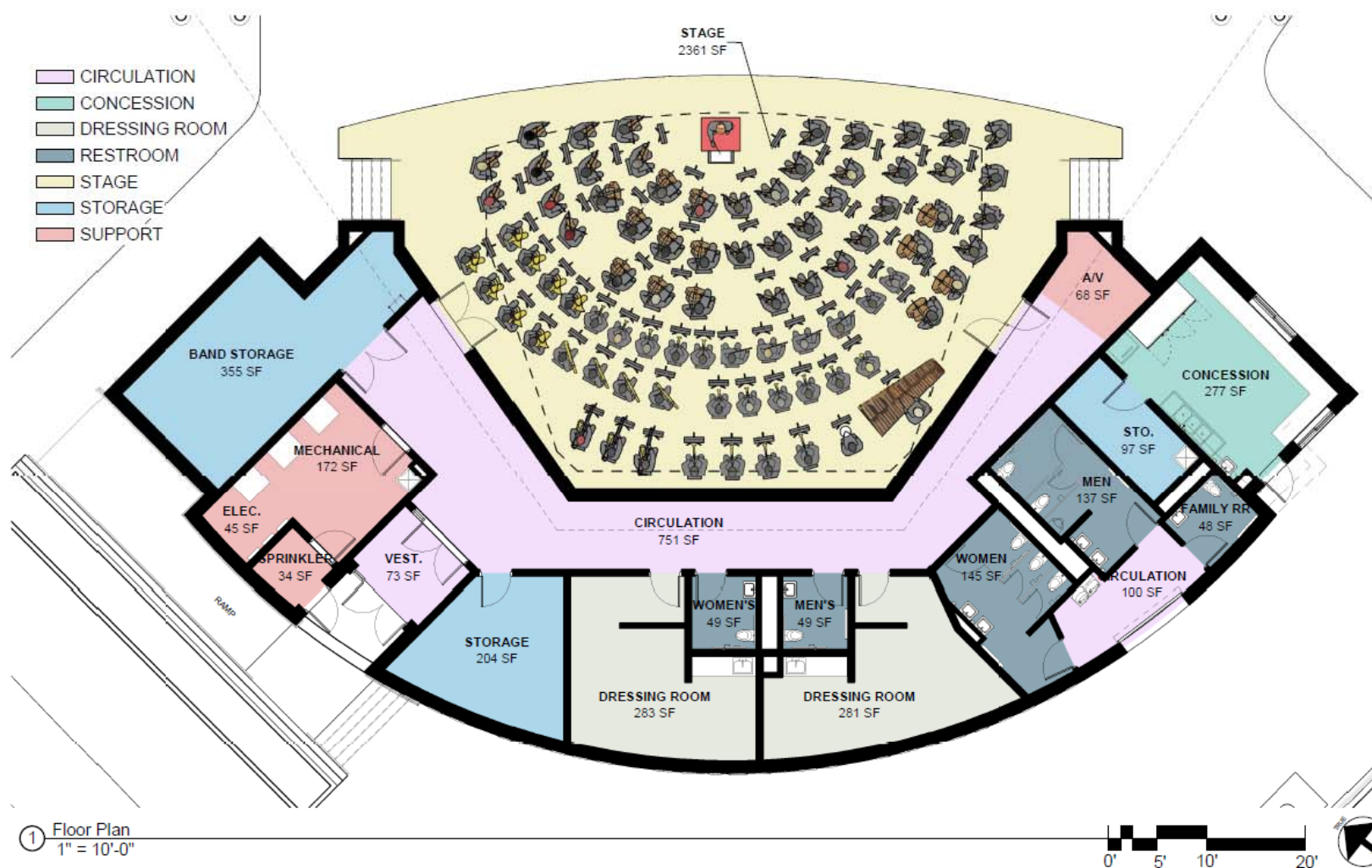
Budget Overview

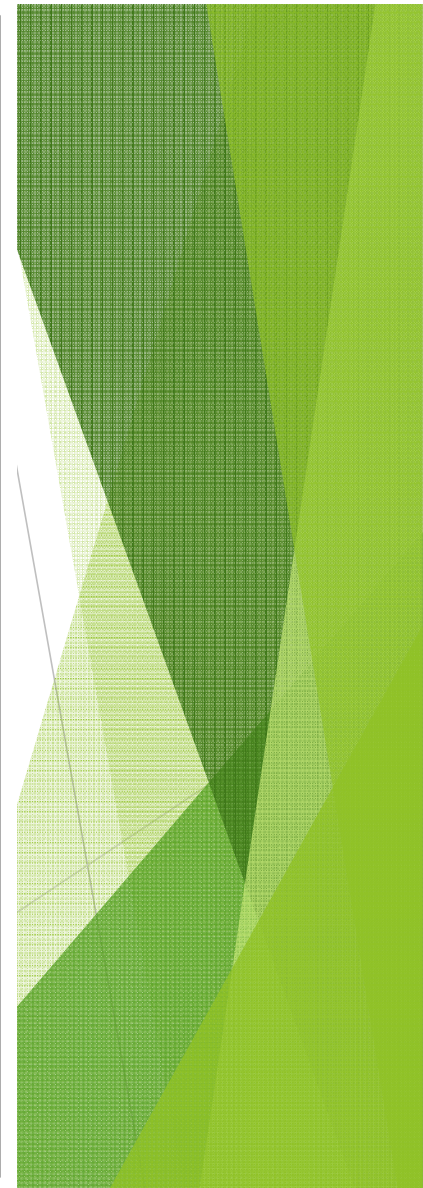
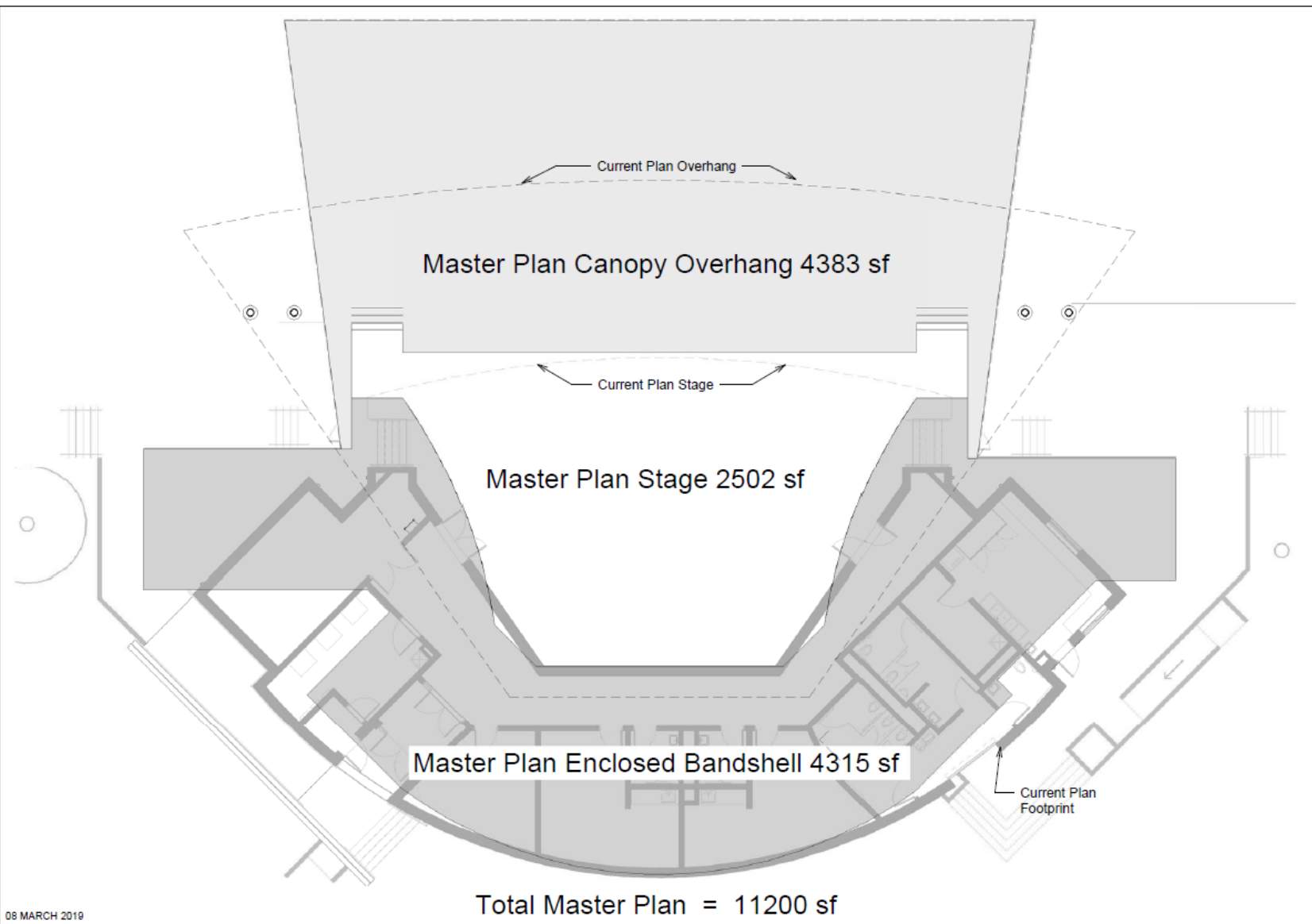
▶ Current Overall Estimate	\$5.7 million
▶ Bandshell	\$3.7 million
▶ Site development	\$2 million
▶ Grants Received	(\$465,000)
▶ OSLAD	(\$400,000)
▶ DuPage Water Quality	(\$ 65,000)
▶ Alternates Under Consideration	
▶ Reduce Bandshell canopy to stage	(\$300,000)
▶ Eliminate Lubko Center terrace	(\$80,000)

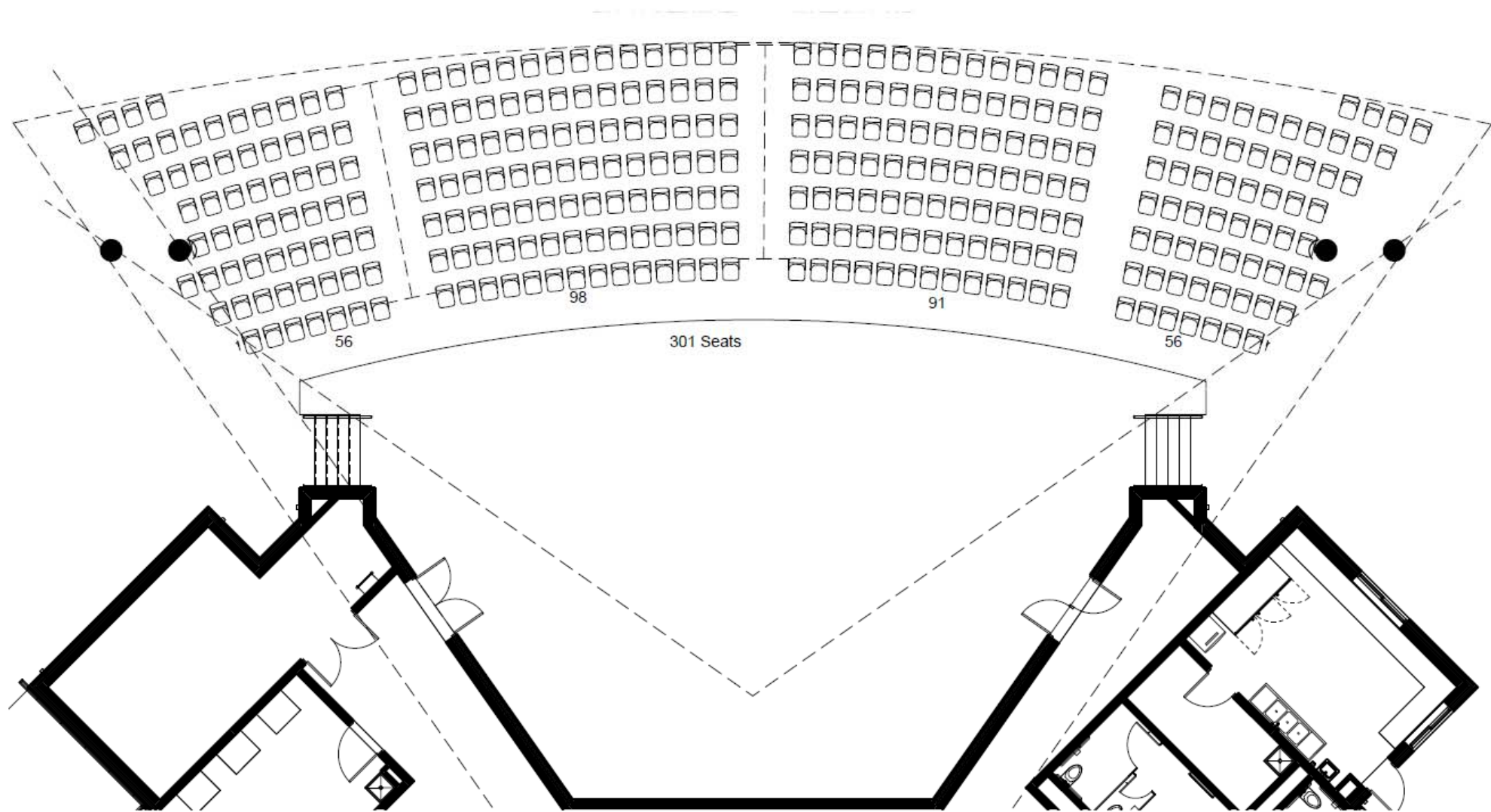
Bandshell Revisions

- ▶ Reconfigured the canopy to more compact design
- ▶ Reduced and reconfigured floorplan
- ▶ Overall Increases in size from existing
- ▶ Revised finishes

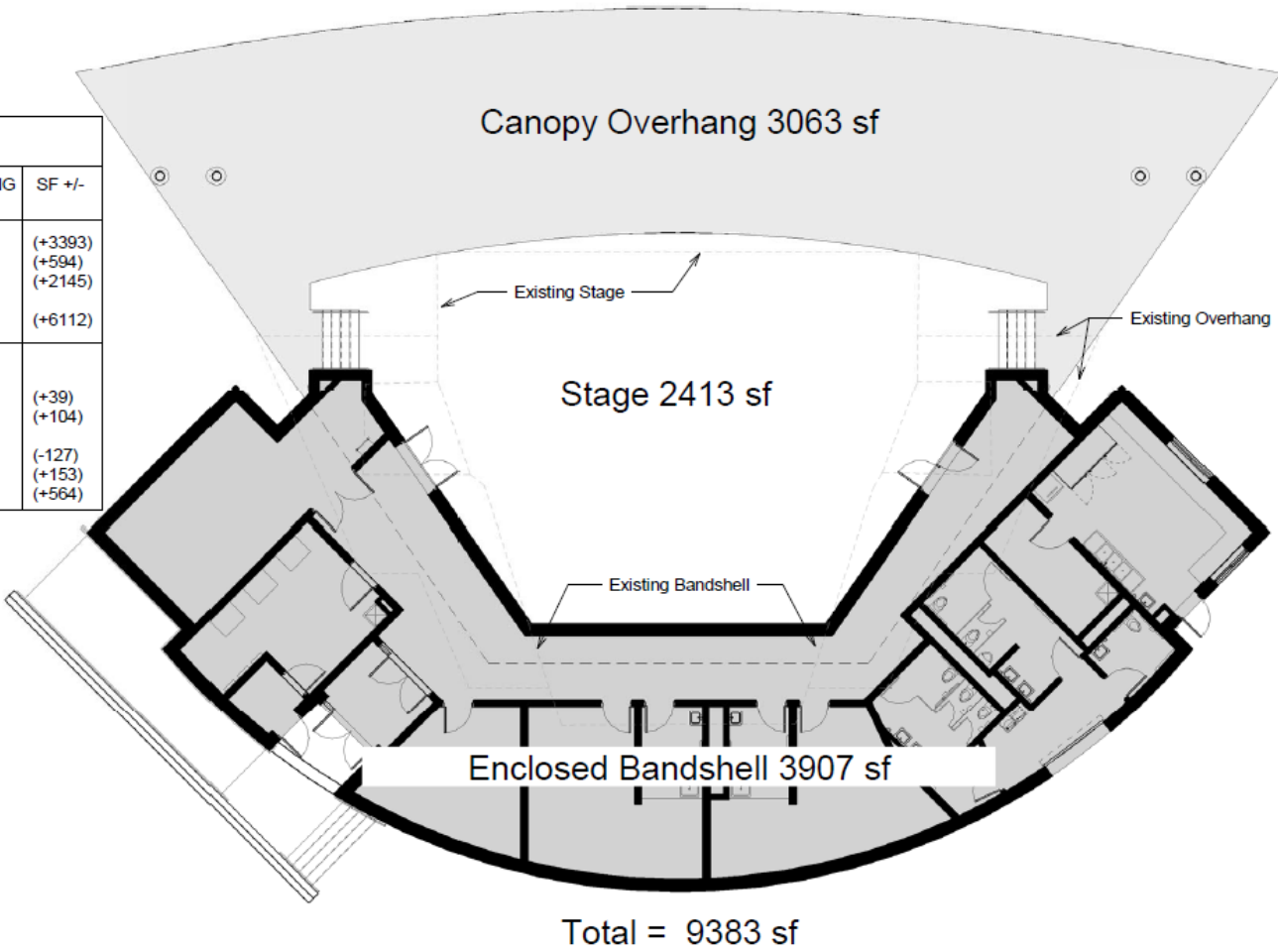


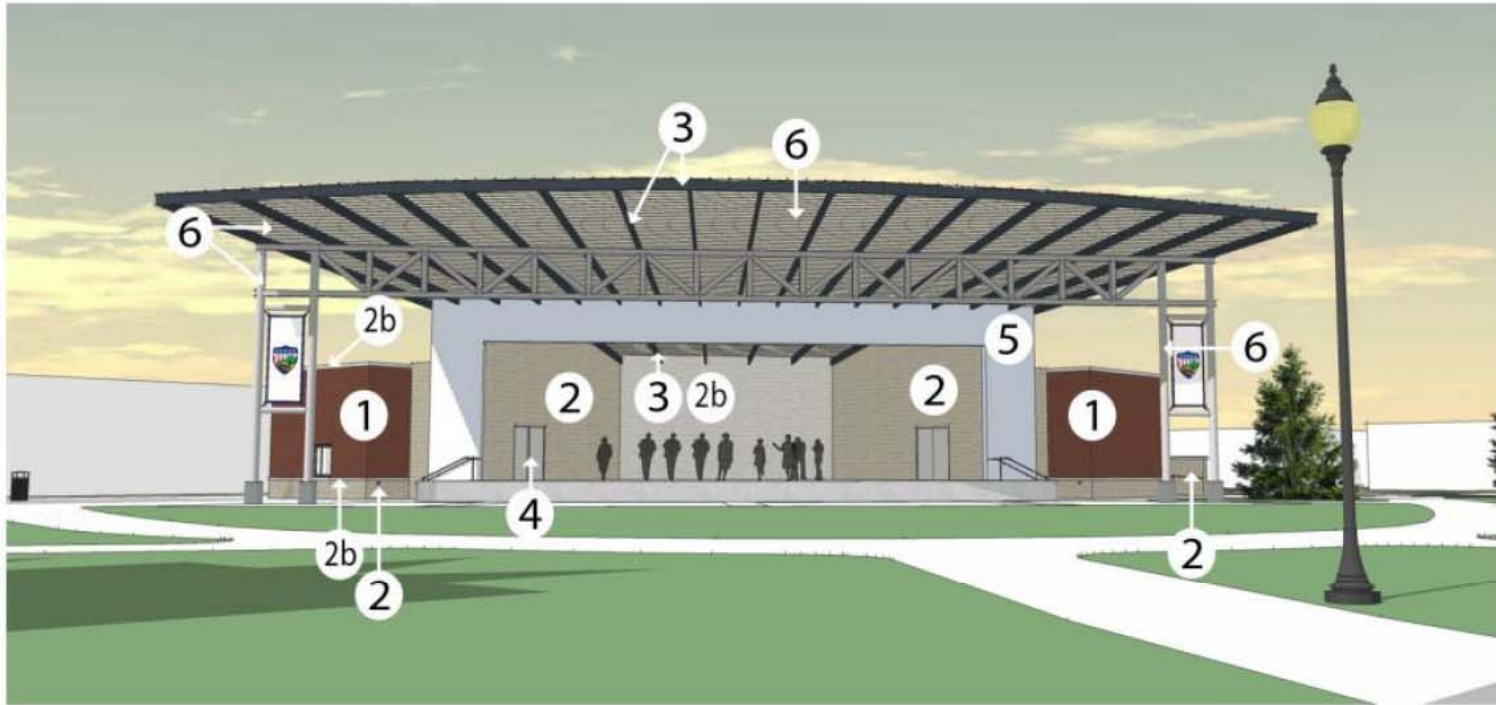


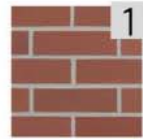




AREA TOTALS			
	CURRENT PLAN	EXISTING	SF +/-
ENCLOSED SPACE	3907sf	514sf	(+3393)
STAGE AREA	2413sf	1819sf	(+594)
OVERHANG AREA	3063sf	918sf	(+2145)
TOTAL AREA	9363sf	3251sf	(+6112)
ITEMIZED AREAS			
BAND STORAGE	355sf	316sf	(+39)
OTHER STORAGE	204sf	100sf	(+104)
CONCESSIONS & BATHROOMS	802sf	929sf	(-127)
MECHANICAL/ELEC.	251sf	98sf	(+153)
DRESSING ROOMS	564sf	N/A	(+564)







1

Concrete Based Face Brick: Echelon Masonry "Harvard Brik" - Schoolhouse Red. Mortar Joint Color to Match Buff



2/2a

2 - Concrete Smooth Faced Stone Base and Stage Side Walls: Artisen Stone Veneers "Cordova Stone" Buff Smooth Texture (Acoustical Slots where Required) Mortar Joint Color to Match Buff

2a - Concrete Rock (Split) Faced Stone Walls - SW Elev: Artisen Stone Veneers "Cordova Stone" - Buff Rock Faced Texture. Mortar Joints to Match Buff



2b

2b - Concrete Smooth Faced Stone Accent Bands and Parapet Caps: Artisen Stone Veneers "Cordova Stone" Alabaster Smooth Texture. Mortar Joint Color to Match Alabaster.



3

Roof Fascia and Tube Steel: PAC-CLAD or Metal Era Two-Piece System. Standard Color: Graphite or Musket Grey. Tube Steel High Performance Paint: Color to Match



4

Door Frames / Side Lights: Clear Anodized Storefront Frame. Bronze Tinted Insulating Glass on Exterior Pebble Texture FRP Doors. Gray Color to Match Frames



5

Stage Surround: Nichiha Panels "Designer Series" Snow or Glacier, Smooth Texture. Attempt to Match Surface 2b Color



6

Roof Deck Canopy (Underside), Painted Steel at Seating Truss and Columns: New Millennium "Form + Shape" "Architectural Deck Ceiling System" Flat, Ribbed, Lineal Plank, Smooth Surface Panels. Deck Smooth Surface Texture. Colors to Match PAC-CLAD Slate Grey or Granite

Landscape Plan - Trees

► Trees Removed

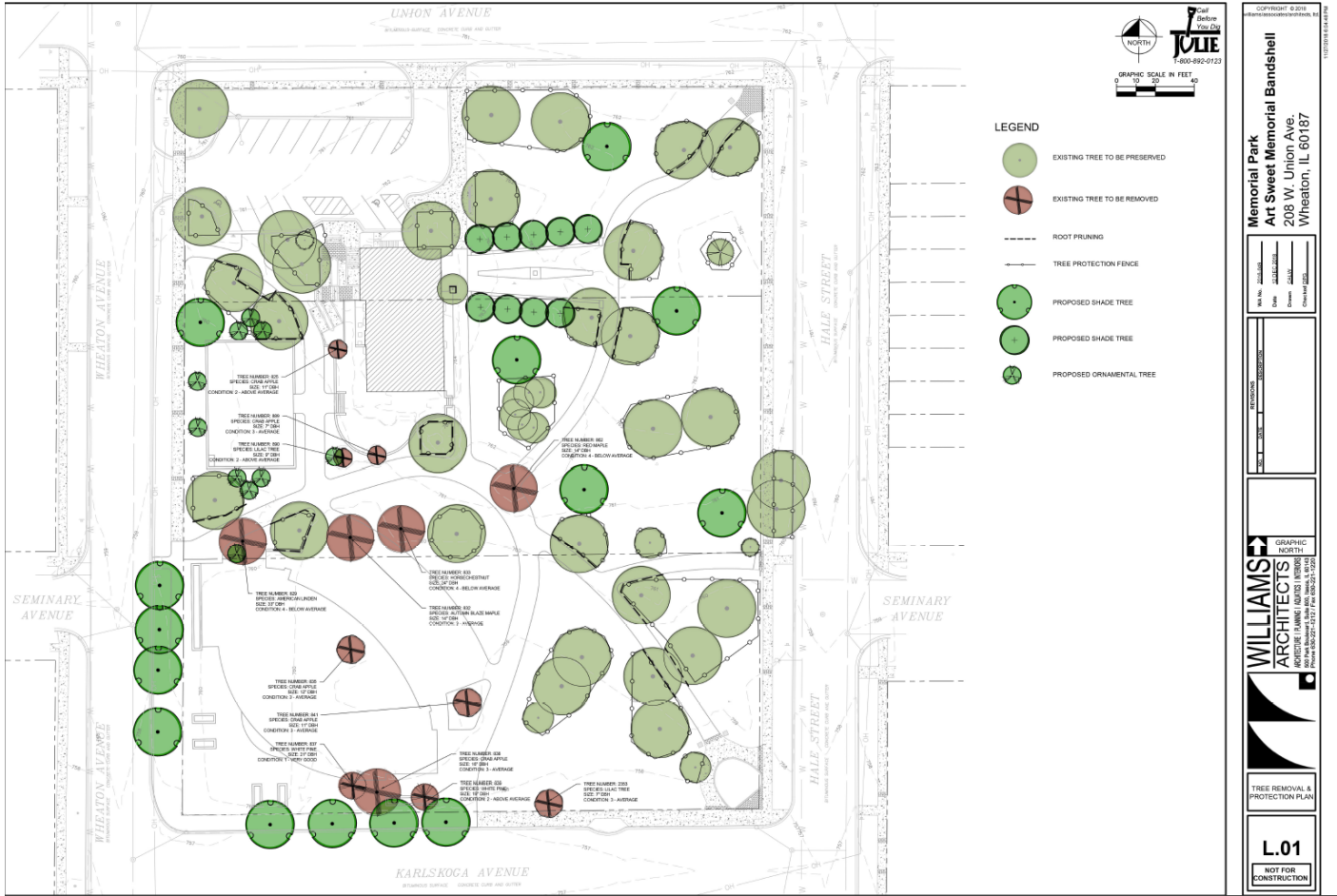
- Shade Trees: 6
- Evergreen Trees: 2
- Ornamental Trees: 6
- TOTAL: 14

► Trees Proposed

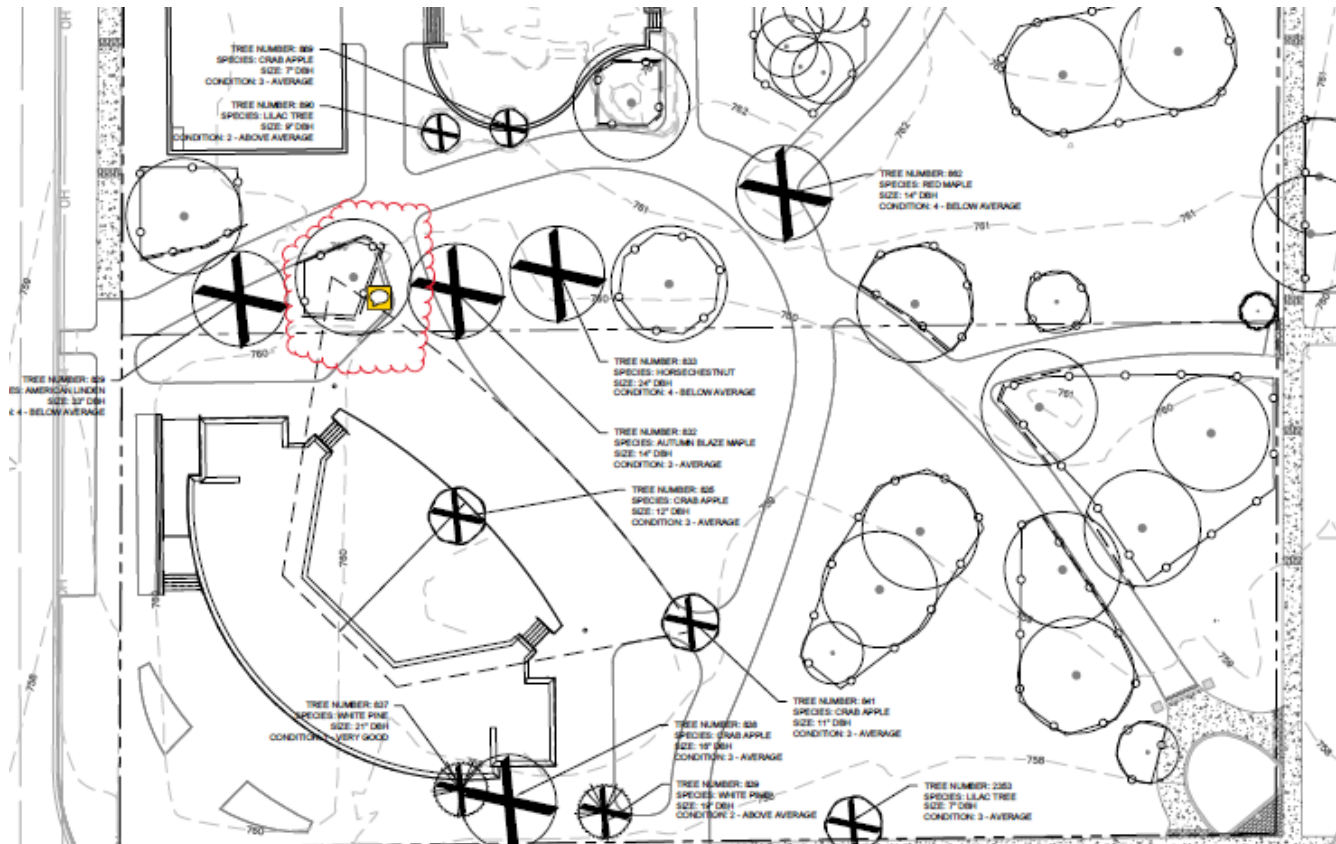
- Shade Trees: 23
- Ornamental Trees: 11
- TOTAL: 34



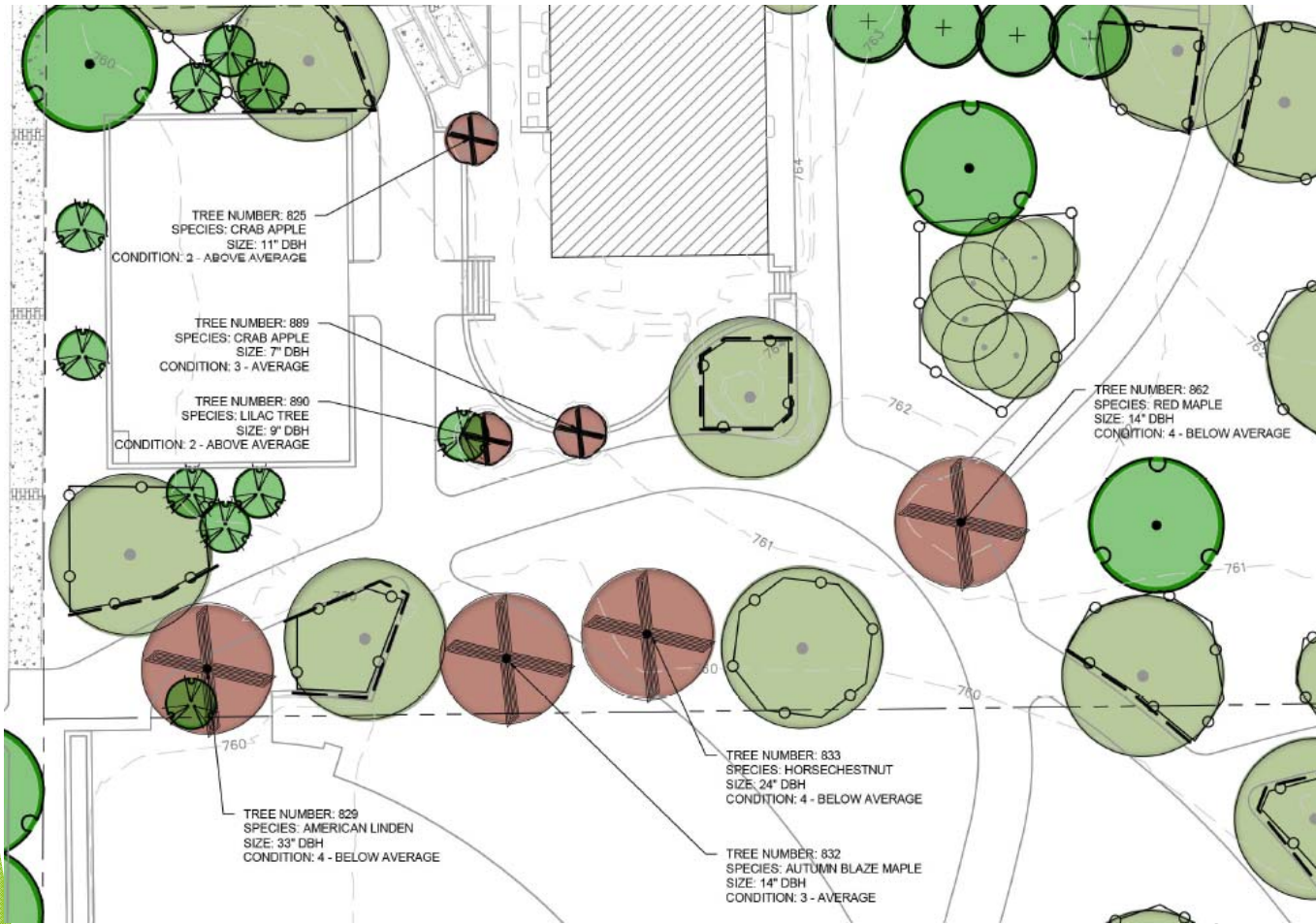
Landscape Plan - Trees



Landscape Plan - Trees



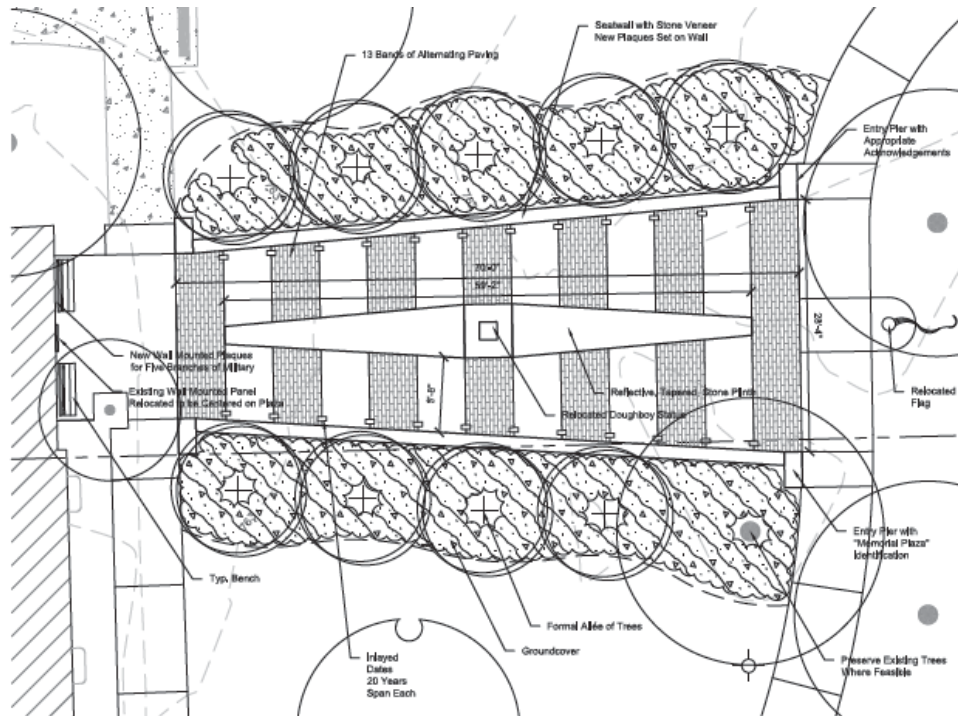
Landscape Plan - Trees



Memorial Area



Memorial Area



Potential Wheaton History to be acknowledged

- 1837/1838 • Land Claimed
- 1859 • Wheaton Incorporated as Village
- 1867 • DuPage County Seat moved to Wheaton
- 1867 • Courthouse Built
- 1890 • Wheaton becomes a City
- 1921 • Founding of the Park District
- 1922 • Establishment of Memorial Park

Potential U.S. Conflicts to be acknowledged

- 1775-1783 • Revolutionary War
- 1812-1815 • War of 1812
- 1846-1848 • Mexican-American War
- 1861-1865 • American Civil War
- 1898 • Spanish-American War
- 1914-1918 • World War I
- 1939-1945 • World War II
- 1950-1953 • Korean War (relocate existing Memorial)
- 1965-1973 • Vietnam War (relocate existing Memorial)
- 1990-1991 • Gulf War
- 2001-ongoing • War on Terror

Programming

► Existing Events / Program / Activities:

- Fun Run in Color
- Misc School - Easter Egg Hunts/Art Walk
- Taste of Wheaton/Run for the Animals
- Municipal Band Thursday evenings June through August at 7pm
- Bible Studies/Church Services
- Monday Entertainment in the Park (Discontinuing)
- Brewfest/Corporate rental
- Misc City - National Night Out, Bike Festival, Festival of Cultures
- Shakespeare in the Park
- Oktoberfest

Proposed Programming

- ▶ Previous programming continues with exception of Music Mondays
- ▶ Summer Concert Series - 2nd and 4th weekend June, July and August; Sunday available for special rentals
- ▶ No additional park programming the 1st, 3rd, and 5th weekends of each month without special approval
 - ▶ Taste of Wheaton Thursday through Sunday - first weekend in June
 - ▶ Brewfest - first weekend in August
 - ▶ Oktoberfest - first weekend in October

Summer Concert Series

- ▶ 2nd and 4th weekend of June, July and August
- ▶ Friday and Saturday - acts from 5:30 - 9:30pm
- ▶ Beer and wine sales conclude at 9:30
- ▶ Park closed at approximately 10pm
- ▶ Schedule similar for other events such as Oktoberfest and Shakespeare in the park
- ▶ Only exception is Taste of Wheaton that will have acts until 10pm

Bandshell – Audio Visual

- ▶ Fixed system
- ▶ Ability to bring in special equipment
- ▶ Projection capabilities
- ▶ Remote speakers - Portable



Next Steps

- ▶ Special Use Hearing - 4/8/19
- ▶ Building Permitting
- ▶ Bidding
- ▶ Construction start remains August

- ▶ Questions
- ▶ Next Meeting