



Memorial Park Renovations

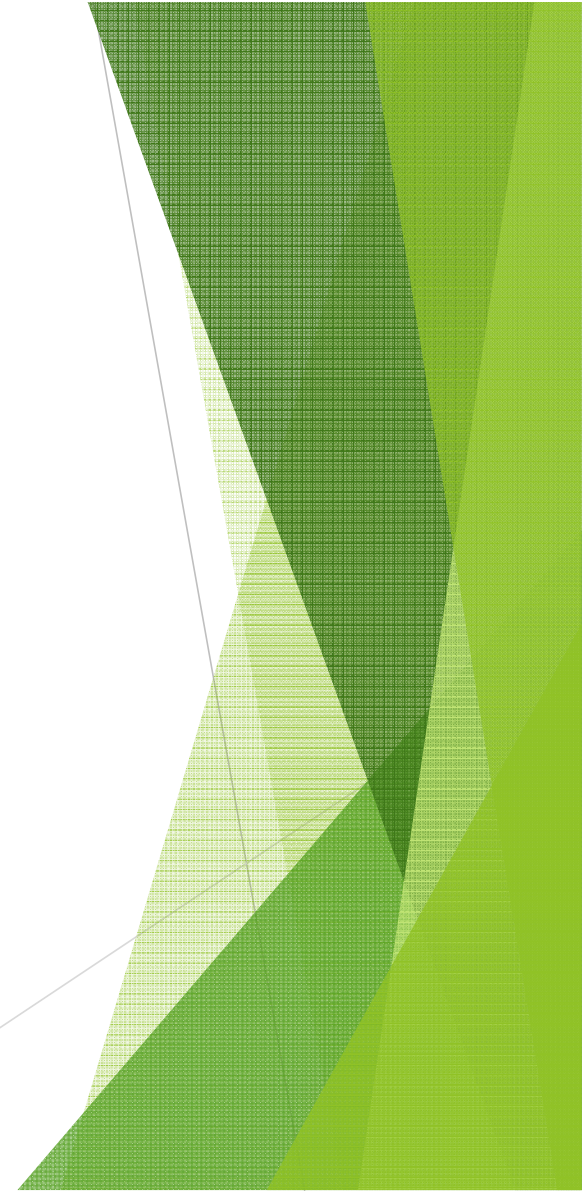
November 19, 2018

Memorial Park Renovations

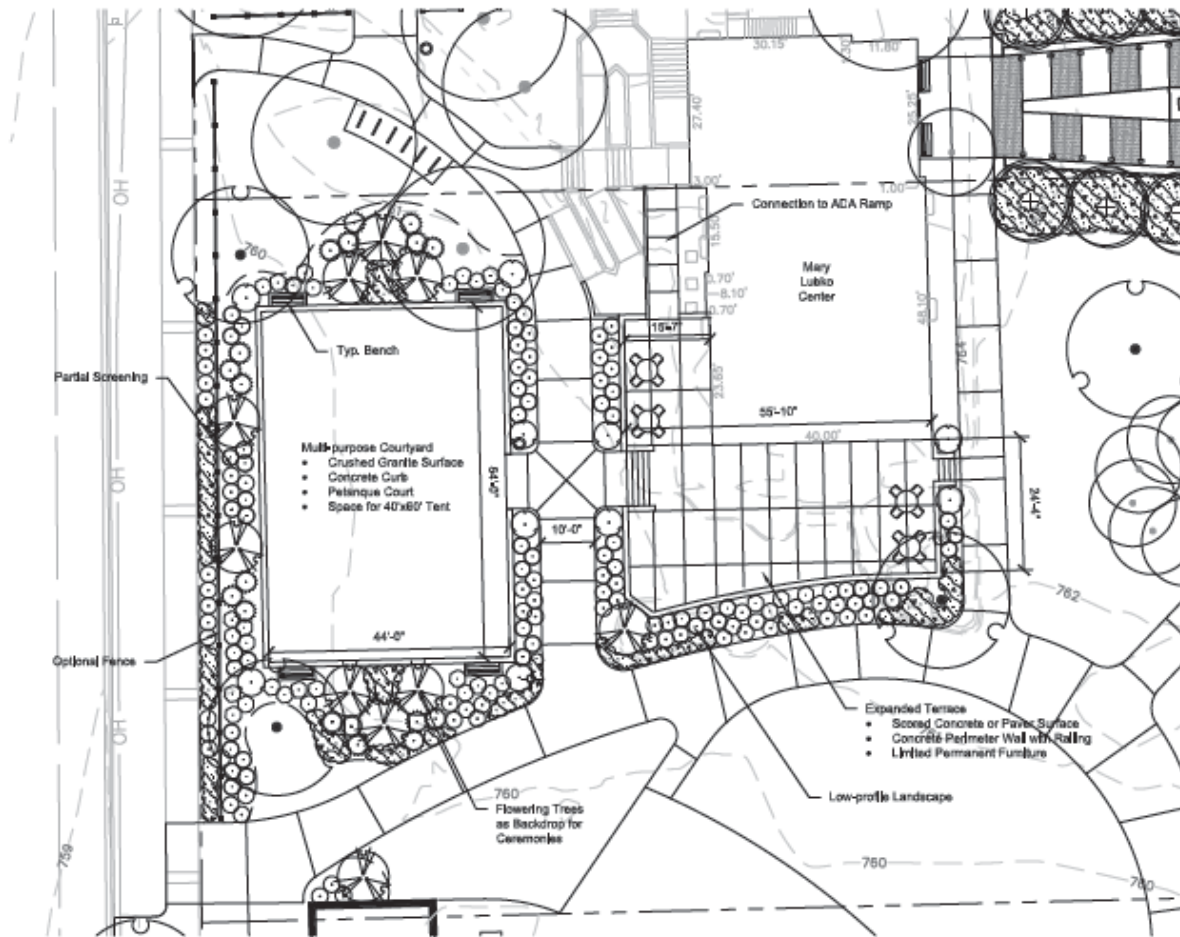
- ▶ Agenda for this evening
 - ▶ Landscape plan including new plantings as well as information about removals
 - ▶ Added detail to the memorial area
 - ▶ Stormwater planning
 - ▶ Further revisions to the interior of the band shell
 - ▶ Future meeting times and location



Overall



Terrace/Multiuse Detail



Terrace/Multiuse Perspective



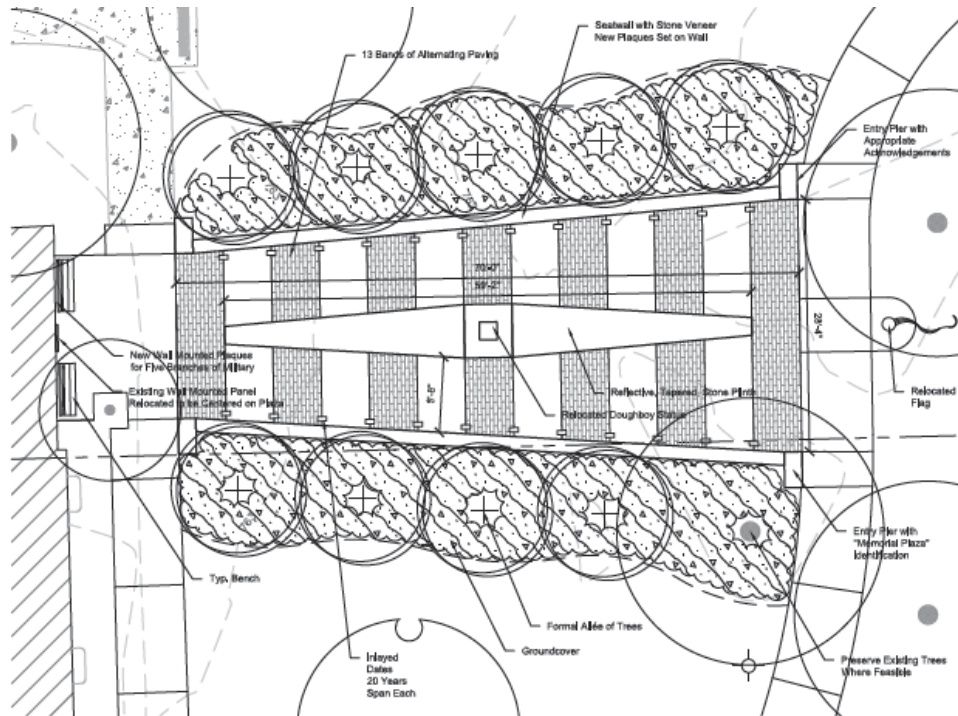
Bandshell from Terrace



Memorial Area



Memorial Area



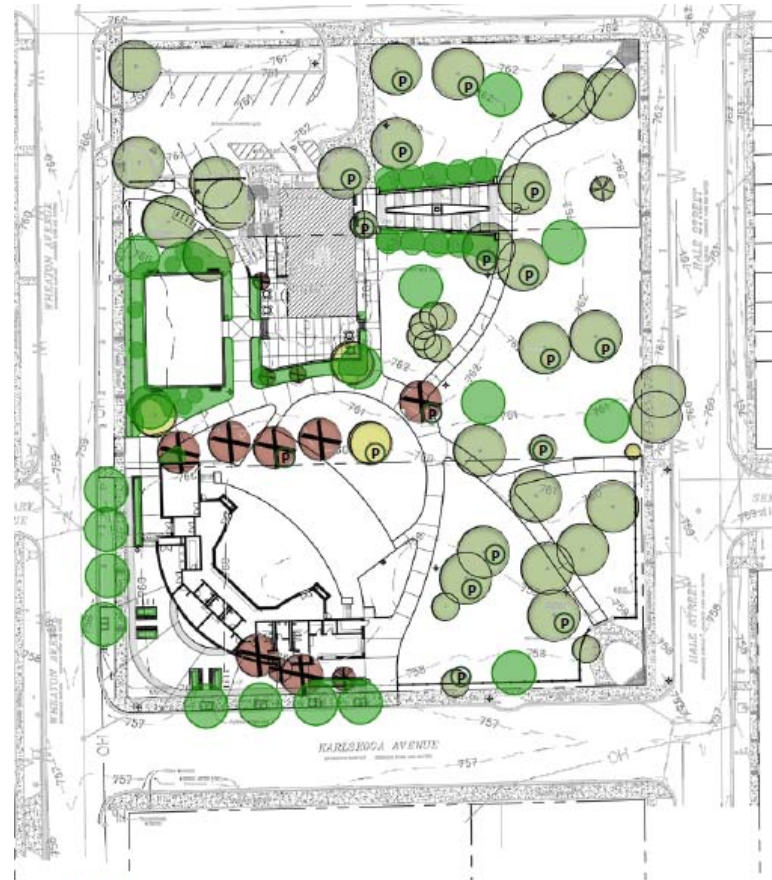
Potential Wheaton History to be acknowledged

- 1837/1838 • Land Claimed
- 1859 • Wheaton Incorporated as Village
- 1867 • DuPage County Seat moved to Wheaton
- 1867 • Courthouse Built
- 1890 • Wheaton becomes a City
- 1921 • Founding of the Park District
- 1922 • Establishment of Memorial Park

Potential U.S. Conflicts to be acknowledged

- 1775-1783 • Revolutionary War
- 1812-1815 • War of 1812
- 1846-1848 • Mexican-American War
- 1861-1865 • American Civil War
- 1898 • Spanish-American War
- 1914-1918 • World War I
- 1939-1945 • World War II
- 1950-1953 • Korean War (relocate existing Memorial)
- 1945-1973 • Vietnam War (relocate existing Memorial)
- 1990-1991 • Gulf War
- 2001-ongoing • War on Terror

Landscape Plan



LEGEND

- | | | | |
|---|------------------------------|---|------------------------|
|  | TREE TO BE PRESERVED |  | PROPOSED NEW TREE |
|  | TREE TO BE FURTHER EVALUATED |  | PROPOSED LANDSCAPE BED |
|  | TREE TO BE REMOVED | | |
|  | TREE MEMORIAL PLAQUE | | |

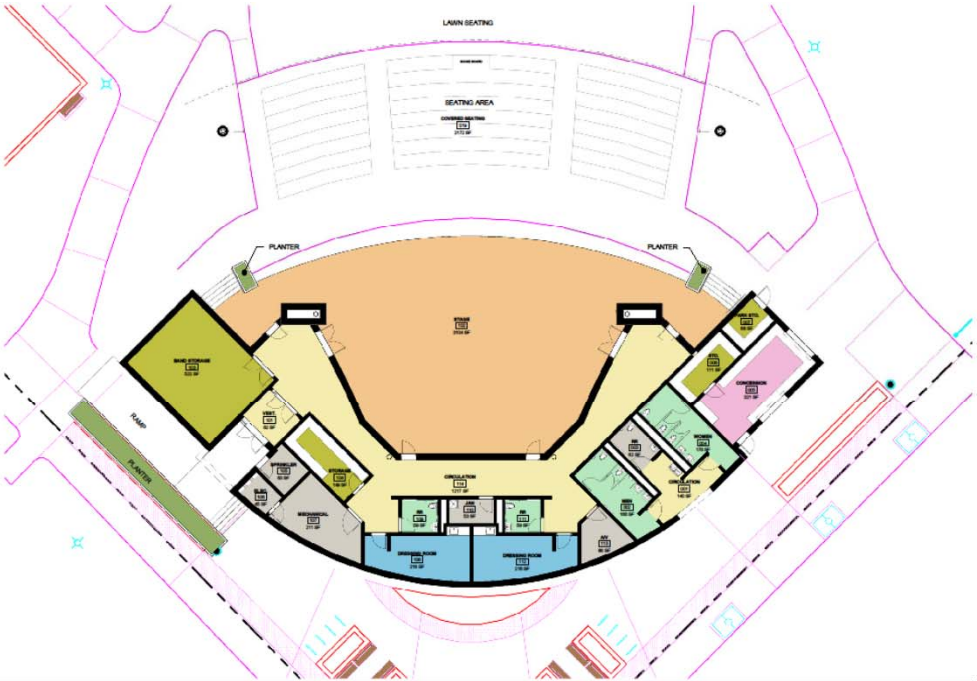


Stormwater Planning

- ▶ Grades of park
- ▶ Impact on walks and plantings
- ▶ Storage capacity needed
- ▶ Best Management Practices
- ▶ Permeable pavement



Bandshell Revisions



GROUND FLOOR
1/16" = 1'-0"



Art Sweet Memorial Bandshell
Memorial Park

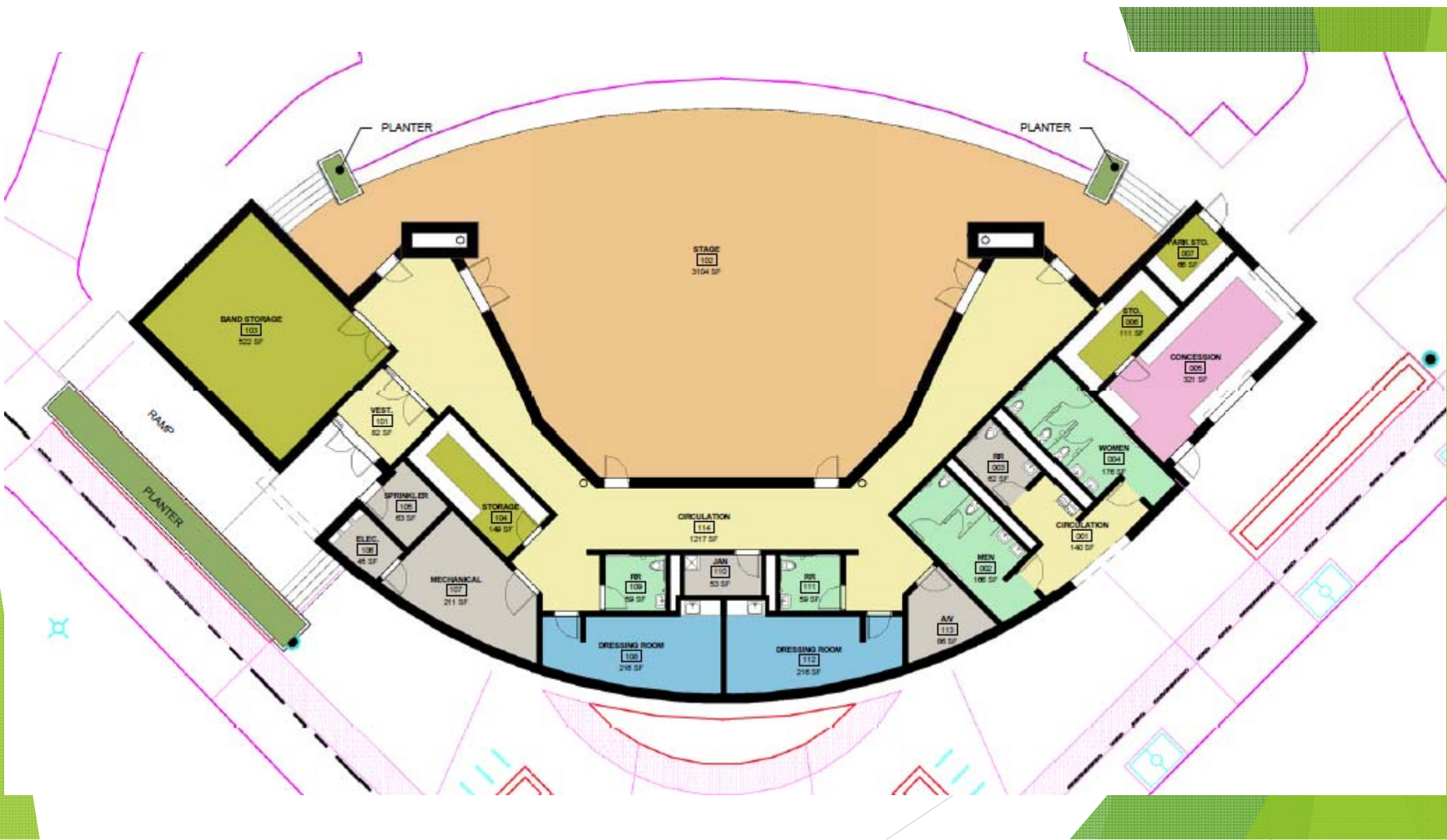
500 Park Boulevard, Suite 800
Itasca, IL 60143
Phone (630) 221-1212
www.williams-architects.com
© 2018, williams-architects llc

2018-049
13 NOV 2018

Summary of Band Shell Revisions

- ▶ Reduced overall enclosed space from 4,800 s.f. to 4,000
- ▶ Two semi-private restrooms for dressing rooms
- ▶ Rearranged utility rooms and added an A/V room
- ▶ Revised layout of public restrooms, mechanical room and concession area





Bandshell from East



Bandshell Cross Section from West



Southwest Corner



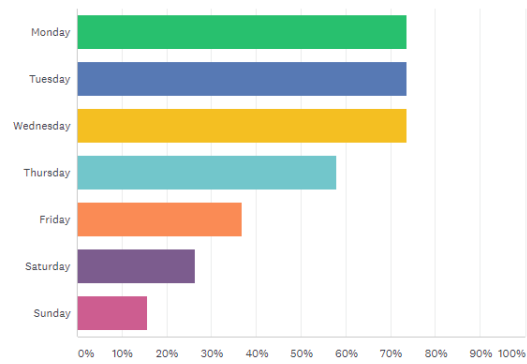
Southeast Corner



Future Meetings - Survey Results

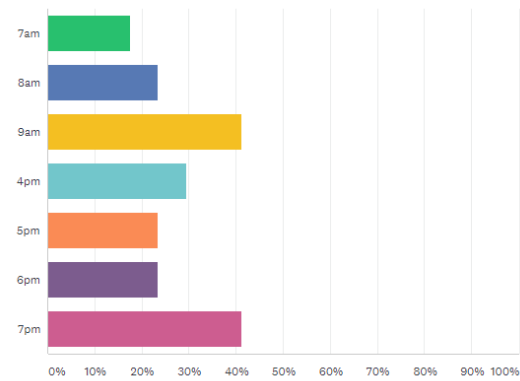
What days would you typically be available to meet?

Answered: 19 Skipped: 0



If we meet on a weekday, what are your preferred times?

Answered: 17 Skipped: 2



Future Meetings

- ▶ Set time/day or vary
- ▶ Information to be provided online
- ▶ Topics for consideration?

