



**WHEATON  
SANITARY  
DISTRICT**

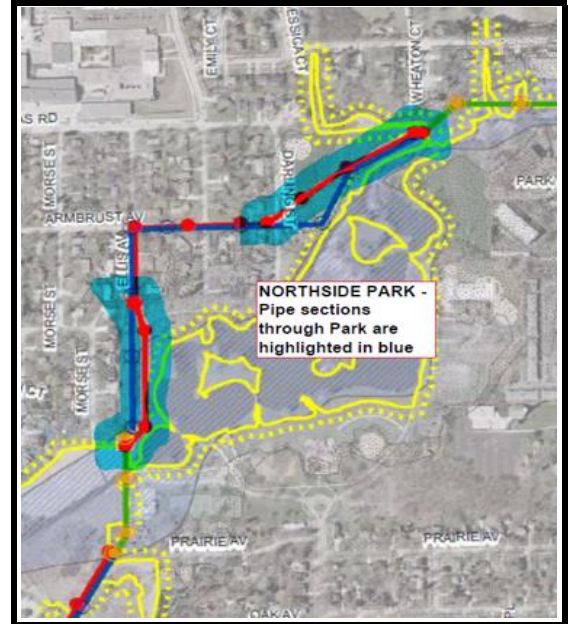
## WHEATON SANITARY DISTRICT

### NORTHSIDE INTERCEPTOR (NSI) SEWER REPLACEMENT PROJECT CONSTRUCTION THROUGH NORTHSIDE PARK

October 1, 2021

#### OVERVIEW & REASONS FOR NSI PROJECT:

- Wheaton Sanitary District has three main interceptor pipes that carry wastewater flow to the Plant.
- The original NSI pipe was installed in 1926 and 1962, and has come to the end of its useful life.
- The current NSI pipe has capacity limitations, infiltration and inflow issues, and deteriorating materials.
- The NSI interceptor needs to be upsized to solve the above issues, for safety, and greater capacity.
- Not completing the Project soon could result in health and safety issues, and/or IEPA violations.
- After replacement, the pipe shouldn't need to be replaced in our lifetimes.
- WSD does not levy taxes. It has been proactively securing Project funding, so large future rate increases are not expected.
- The total Project cost is about \$38.2M.
- For ongoing Project updates, visit - [www.wsd.dst.il.us/news](http://www.wsd.dst.il.us/news)



#### PARTNERSHIP WITH WHEATON PARK DISTRICT:

Wheaton Sanitary District is partnering with the Wheaton Park District regarding the NSI Project.

The existing NSI pipe is within an easement through the Park that was granted during its installation. Additional easements were granted to facilitate construction and reduce the impact on the Park. The need for the NSI Project was communicated during the renovation of the Park 10 years ago and during the follow-up meetings.



#### ROUGH SCHEDULE FOR NORTHSIDE PARK:

Heavy construction will take place through Northside Park starting ~November 1st and should be completed by April 1st. Initial activities such as survey, construction fence installation, tree removal, and equipment delivery will start in October. The winter weather will play a strong role in how much work and when the work can be completed. Subsequent updates will be provided on WSD's website as needed.

#### NSI PROJECT SPECIFICS:

- The NSI Project started in March 2021, and is expected to last three years, with the Northside Park Phase lasting about six months.
- The total NSI pipe is 5.2 miles, and the majority will be replaced.
- The NSI pipe ranges in diameter from 12" to 60".
- NSI construction methods include open-cut excavation, pipe augering, and microtunneling.
- Trees will be impacted, but every effort has been made to save as many as possible, and there will be a replacement program.
- The primary traffic route for this phase will be Ellis to Armbrust to Gary Avenues, with some traffic on Darling and Papworth Streets.
- Hundreds of truckloads of materials will be hauled from and to the Park, and over one thousand truckloads hauled in the general area.
- Construction will be 7:00 am - 5:00 pm (but allowed until 7:00 pm)



#### CLOSURES AND DETOURS:

Road closures are expected on Ellis Avenue and Armbrust Avenue during the Northside Park Phase of the NSI Project. Residents will be informed accordingly.

#### FOR QUESTIONS, PLEASE CONTACT:

Jim Snell, NSI Construction Engineer  
Phone: (815) 444-3321 or  
Email: [JSnell@baxterwoodman.com](mailto:JSnell@baxterwoodman.com)