

# RECREATION



ANNUAL  
REPORT  
2022



# TABLE OF CONTENTS

We are Recreation	1
About the Department	2
Benefits	3
Accomplishments	4-5
Financial Overview	6
Participant Overview	7
By the Numbers	8
Marketing	9-10
Special Events	11-12
Camps	13
Community Center	14
Creative & Performing Arts	15
Lincoln Marsh	16
Mary Lubko Center	17
Preschool & Early Childhood	18
Varied Interest	19
Testimonials	20

# WE ARE RECREATION

---

The Recreation department thrived in providing effective, efficient, high-quality programs, events, services, and facilities to residents of Wheaton and visitors to our community in 2022.



This dynamic team of nine full-time staff have nearly 130 years of combined service at the Wheaton Park District. We are committed to helping people discover new adventures, hobbies, and experiences all while having fun!

---

**GRACIE AVILES**, DAYTIME COMMUNITY CENTER MANAGER

**VICKI BEYER CPRP**, DIRECTOR OF RECREATION

**DEB DITCHMAN**, OUTDOOR EDUCATION SUPERVISOR

**LYN HAVELKA**, EVENING COMMUNITY CENTER MANAGER

**TERRA JOHNSON**, LINCOLN MARSH PROGRAM MANAGER

**JAMIE MARTINSON CPRP**, SUPERINTENDENT OF RECREATION PROGRAMS

**RICK NAPIER CPRP**, REGISTRAR/SOFTWARE SPECIALIST

**MEGANN PANEK CPRP**, MARY LUBKO CENTER MANAGER

**CHAD SHINGLER**, RECREATION MANAGER

---

# ABOUT THE DEPARTMENT

## MISSION STATEMENT

To aspire to provide programs, events and services that reach all age groups and interests and align with our vision, values and community feedback.

## Vision Statement

We, the Recreation Department Team, commit to improving our programming reach, balance, and frequency of use in ways that benefit, encourage and promote lifelong leisure.

The Wheaton Park District Recreation Department is comprised of seven business units which offer comprehensive year-round programs for all age groups and interests at a number of facilities throughout the Wheaton Park District.

Camps		Community Center
Creative & Performing Arts		Lincoln Marsh
Mary Lubko Center		Varied Interest
Preschool & Early Childhood		





# BENEFITS OF RECREATION

The Wheaton Park District Recreation Department offers a wide variety of programs, events and services that align with the National Recreation & Park Association's three pillars:



## HEALTH & WELLNESS

**Provide opportunities for group, partner, and personal development.**

**Positively impact social, emotional, intellectual, and physical well-being.**

**Expand knowledge, explore new interest, and develop new hobbies.**



## CONSERVATION

**Outdoor programs and activities further appreciation for the natural world.**

**Promote the "reduce, reuse, recycle" initiative.**

**Provide valuable community benefits including storm water storage, water quality improvement and wildlife habitat.**



## SOCIAL EQUALITY

**Equal fun for all.**

**Provide opportunities to interact cooperatively with people from diverse backgrounds and abilities.**

**Promote community engagement by building self-esteem and establishing friendships.**

# ACCOMPLISHMENTS

The Wheaton Park District Recreation Department continually strives to provide the community with the highest quality programs and services. 2022 highlights are listed below:

## Committee Involvement

- GREEN TEAM
- V.A.L.U.E.S
- SAFETY COMMITTEE
- REC TRAC MIGRATION
- PLAY FOR ALL FOUNDATION BOARD MEMBER
- PROGRAM & RECREATION SERVICES



# VALUES

## Certification & Accreditation

- Director of Recreation, Superintendent of Recreation and Daytime Community Center Manager maintained and renewed Certified Parks and Recreation Professional (CPRP) certification.
- Mary Lubko Center Manager received the Certified Parks and Recreation Professional (CPRP) certification.
- Superintendent of Recreation successfully passed the 5-year American Camp Association site visit for reaccreditation.
- All Lincoln Marsh staff were certified as Climbing Tower lead facilitators by Experiential Systems, Inc. (ESI).
- Environmental Education Supervisor completed year 2 of Revenue Development and Management School.

## Professional Development

- Conference attendance: Illinois Park and Recreation Association.
- Wheaton Park District Leadership Academy.
- Unconscious Bias training.
- Additional trainings completed: PDRMA Risk Management Institute webinars, PDRMA online educational opportunities, Cyber Security, Rec Trac 3.1 Migration Training, Global Compliance Network trainings, Antioch University webinars, Environmental Education webinars, Alliance webinars for challenge course operation strategies, Experiential Systems, Inc. (ESI) Climbing training.





# ACCOMPLISHMENTS CONTINUED

## Wheaton Park District Event Involvement

- SAFETY FAIR
- ICE-A-PALOOZA
- BREW AND SELTZER FEST
- CREAM OF WHEATON
- HALLOWEEN HAPPENING
- GO FLY A KITE
- FISH-O-RAMA
- MEMORIAL PARK SUMMER CONCERT SERIES

## Community Involvement

- Seasonal play dates at the Lincoln Marsh Prairie Patch Nature Play Area
- Marian Park Pop-up Play Day

## Other Achievements

- Mary Lubko Center Manager is a member of the IPRA Senior Committee.
- Lincoln Marsh Program Manager and Program Assistant are members of IPRA Nature Task Force Committee.
- Customer Service Attendants, Mary Lubko Administrative Assistant and Instructor, Cooking Instructor and Lincoln Marsh, Environmental Educator all received the Distinguished Service Award for 5 years of service.
- Wide Horizon's Preschool Teacher and Lincoln Marsh Environmental Educator received the Distinguished Service Award for 10 years of service.
- Tai Chi Instructor and Pottery Instructor both received the Distinguished Service Award for 15 years of service.
- Wide Horizon's Preschool Teacher received the Distinguished Service Award for 30 years of service.



# FINANCIAL OVERVIEW

Program Net Profits		2018	2019	2020	2021	2022
Adult Education	Revenue	\$82,053	\$85,855	\$36,155	\$56,445	\$45,666
	Expenses	\$50,240	\$52,942	\$23,778	\$27,539	\$11,503
	<b>Net Profit</b>	<b>\$31,813</b>	<b>\$32,913</b>	<b>\$12,376</b>	<b>\$28,906</b>	<b>\$34,163</b>
Camps	Revenue	\$363,521	\$370,394	\$59,648	\$309,414	\$418,496
	Expenses	\$239,367	\$224,644	\$43,381	\$139,066	\$199,381
	<b>Net Profit</b>	<b>\$124,154</b>	<b>\$145,750</b>	<b>\$16,268</b>	<b>\$170,347</b>	<b>\$219,114</b>
Creative & Performing Arts	Revenue	\$131,215	\$133,897	\$56,874	\$90,210	\$143,166
	Expenses	\$78,353	\$75,352	\$36,707	\$49,707	\$85,195
	<b>Net Profit</b>	<b>\$52,862</b>	<b>\$58,545</b>	<b>\$20,167</b>	<b>\$40,503</b>	<b>\$57,970</b>
Environmental Education	Revenue	\$74,434	\$71,659	\$13,008	\$82,649	\$99,053
	Expenses	\$28,785	\$29,099	\$4,675	\$27,848	\$41,504
	<b>Net Profit</b>	<b>\$45,649</b>	<b>\$42,560</b>	<b>\$8,333</b>	<b>\$54,801</b>	<b>\$57,549</b>
Challenge Course	Revenue	\$110,534	\$99,520	\$0	\$24,011	\$47,971
	Expenses	\$48,858	\$49,025	\$8,226	\$8,242	\$17,490
	<b>Net Profit</b>	<b>\$61,676</b>	<b>\$50,495</b>	<b>(\$8,226)</b>	<b>\$15,768</b>	<b>\$30,480</b>
Mary Lubko Center	Revenue	\$239,823	\$239,509	\$28,011	\$60,523	\$103,345
	Expenses	\$233,711	\$230,626	\$40,768	\$71,136	\$115,707
	<b>Net Profit</b>	<b>\$6,112</b>	<b>\$8,883</b>	<b>(\$12,757)</b>	<b>(\$10,613)</b>	<b>(\$12,362)</b>
Preschool & Early Childhood	Revenue	\$313,822	\$322,458	\$161,522	\$196,117	\$305,234
	Expenses	\$194,186	\$195,503	\$106,867	\$135,340	\$192,666
	<b>Net Profit</b>	<b>\$119,636</b>	<b>\$126,955</b>	<b>\$54,655</b>	<b>\$60,777</b>	<b>\$112,568</b>
Varied Interest	Revenue	\$133,425	\$133,180	\$25,918	\$117,480	\$61,821
	Expenses	\$90,950	\$80,397	\$15,382	\$56,613	\$37,670
	<b>Net Profit</b>	<b>\$42,474</b>	<b>\$52,784</b>	<b>\$10,536</b>	<b>\$60,867</b>	<b>\$24,151</b>
Seasonal Programs	Revenue	\$12,024	\$12,101	\$4,842	\$6,668	\$13,128
	Expenses	\$7,705	\$7,936	\$1,766	\$4,032	\$7,034
	<b>Net Profit</b>	<b>\$4,319</b>	<b>\$4,164</b>	<b>\$3,076</b>	<b>\$2,636</b>	<b>\$6,094</b>
<b>Total</b>	Revenue	\$1,460,850	\$1,468,572	\$385,977	\$943,515	\$1,237,878
	Expenses	\$972,155	\$945,523	\$281,549	\$519,524	\$708,150
	<b>Net Profit</b>	<b>\$488,696</b>	<b>\$523,049</b>	<b>\$104,427</b>	<b>\$423,991</b>	<b>\$529,728</b>

Administrative & Facility Net Operating Costs		2018	2019	2020	2021	2022
Community Center	Revenue	\$59,486	\$53,996	\$12,081	\$17,348	\$24,021
	Expenses	\$562,007	\$544,511	\$417,687	\$461,812	\$456,287
	<b>Net Operating Cost</b>	<b>(\$502,522)</b>	<b>(\$490,515)</b>	<b>(\$405,606)</b>	<b>(\$444,465)</b>	<b>(\$432,267)</b>
Lincoln Marsh/Warming Shelter	Revenue	\$1,460	\$752	\$312	\$0	\$138
	Expenses	\$331,397	\$336,993	\$237,140	\$208,241	\$237,445
	<b>Net Operating Cost</b>	<b>(\$329,937)</b>	<b>(\$336,241)</b>	<b>(\$236,828)</b>	<b>(\$208,241)</b>	<b>(\$237,307)</b>
Mary Lubko Center	Revenue	\$7,925	\$4,300	\$150	\$4,850	\$5,475
	Expenses	\$144,230	\$133,948	\$104,829	\$106,786	\$121,526
	<b>Net Operating Cost</b>	<b>(\$136,305)</b>	<b>(\$129,648)</b>	<b>(\$104,679)</b>	<b>(\$101,936)</b>	<b>(\$116,051)</b>
Other Administrative Areas*	Revenue	n/a	n/a	\$1,643	\$1,756	\$1,781
	Expenses	\$279,014	\$293,627	\$308,296	\$307,060	\$314,031
	<b>Net Operating Cost</b>	<b>(\$279,014)</b>	<b>(\$293,627)</b>	<b>(\$306,653)</b>	<b>(\$305,304)</b>	<b>(\$312,250)</b>
<b>Total</b>	Revenue	\$68,871	\$59,047	\$14,186	\$23,954	\$31,415
	Expenses	\$1,316,648	\$1,309,079	\$1,067,951	\$1,083,899	\$1,129,290
	<b>Net Operating Cost</b>	<b>(\$1,247,777)</b>	<b>(\$1,250,031)</b>	<b>(\$1,053,765)</b>	<b>(\$1,059,946)</b>	<b>(\$1,097,875)</b>

\*Includes revenue for garden plot rentals and administrative expenses for Adult Education, Camps, Creative & Performing Arts, Preschool & Early Childhood, Varied Interest, Seasonal Programs, Director of Recreation, Superintendent of Recreation.

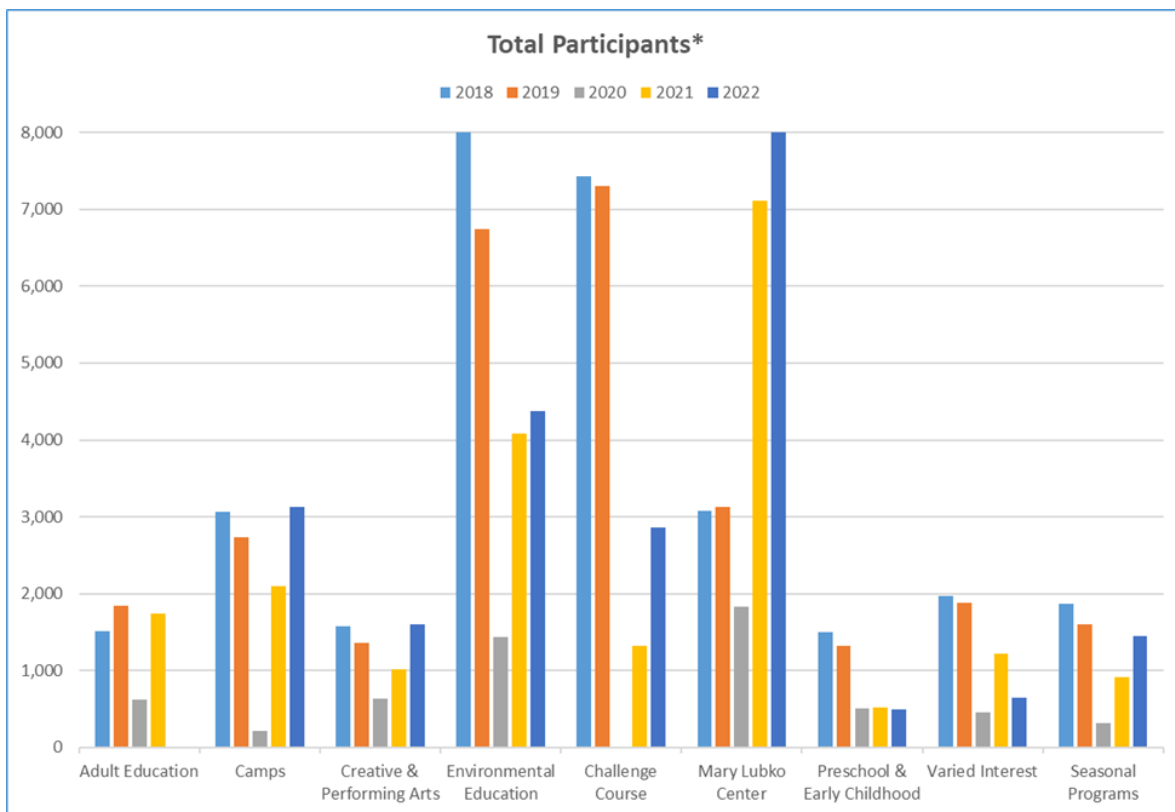
Due to staff restructuring, some program classifications changed in 2022. Adult Education will no longer be its own business unit - programs were distributed to Creative & Performing Arts, Mary Lubko Center, Varied Interest and Athletics. The revenue/expenses remaining in this category in 2022 are for adult athletics programs which will transfer to an Athletic area account in 2023.

2022 unaudited year-end figures



# PARTICIPATION OVERVIEW

Total Participants*	2018	2019	2020	2021	2022
Adult Education	1,513	1,847	619	1,741	NA
Camps	3,068	2,737	212	2,100	3,135
Creative & Performing Arts	1,577	1,356	638	1,012	1,606
Environmental Education	8,011	6,744	1,433	4,081	4,376
Challenge Course	7,427	7,306	0	1,320	2,863
Mary Lubko Center	3,074	3,124	1,828	7,106	11,921
Preschool & Early Childhood	1,505	1,326	508	518	490
Varied Interest	1,973	1,881	453	1,220	644
Seasonal Programs	1,865	1,598	311	916	1,450
<b>Total</b>	<b>30,013</b>	<b>27,919</b>	<b>6,002</b>	<b>20,014</b>	<b>26,485</b>



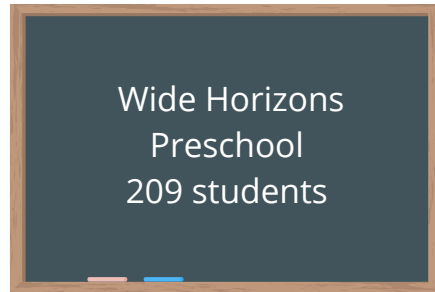
\*Participation data should not be compared between different business units but only within a specific business unit to see how it has changed from year to year.

Due to staff restructuring, some program classifications changed in 2022. Adult Education will no longer be its own business unit - programs were distributed to Creative & Performing Arts, Mary Lubko Center, Varied Interest and Athletics.

# 2022 BY THE NUMBERS

## MLC DAY TRIPS

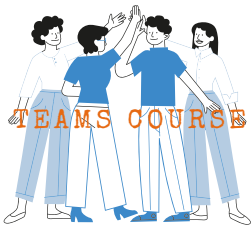
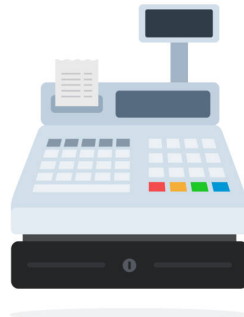
422 day travelers



Wide Horizons  
Preschool  
209 students



COMMUNITY CENTER  
SERVICE DESK TRANSACTIONS  
2,301 TOTAL  
FEES COLLECTED: \$149,461.40



## TEAMS COURSE

207 groups  
2,863 participants



SPECIAL EVENTS  
50+ VOLUNTEERS



MLC SENIOR TAX  
AIDE  
212 Tax Returns  
filed by AARP  
volunteers



CHILDRENS PLAYHOUSE  
THEATRE  
2 productions!  
TICKETS SOLD 1,518



LINCOLN MARSH  
Environmental  
Education  
365 programs  
4,376 participants



Facility Rentals  
Mary Lubko Center  
28  
Community Center  
212



# MARKETING

In 2022, the Recreation Department and Marketing Department worked closely together with one unified goal of promoting our programs, offerings, events and continuing to best serve our community. The marketing department helps support the recreation department by providing us a voice to the community and assuring our communication to the public is exceptional.

The Recreation Department's marketing efforts consist of our seasonal program guide, which is traditionally delivered to (26,000+) households each season, targeted marketing techniques via direct mail, e-blasts, and social media outreach and print materials. In 2022, our seasonal program guide remained a digital guide.

## **Specialized Marketing:**

- 30+ dedicated e-blasts for recreation programs.
- Dedicated monthly newsletter and e-blasts focusing on the recreation department offerings.
- Program guide remained in a digital format throughout 2022. This allowed new opportunities for a "living" guide that we can edit as programs change and as new programs are added.

## **Partnerships:**

- \$2,000+ sponsorship dollars secured for recreation programs and events.

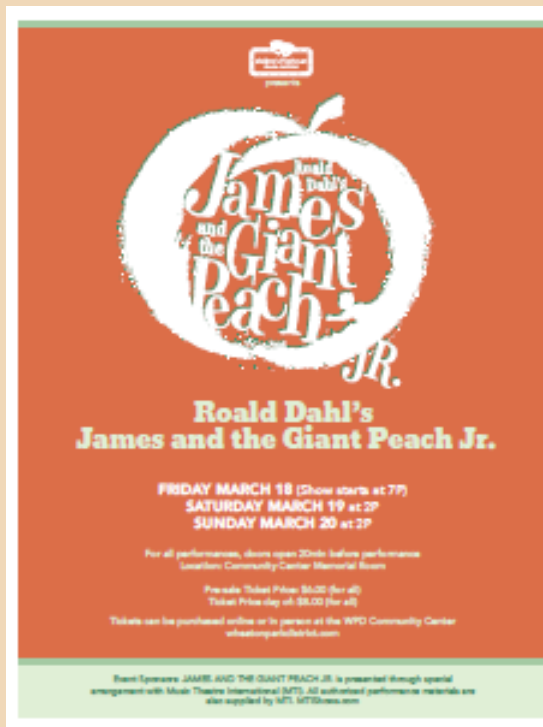
## **Social Media/E-Blasts:**

- 30+ social media posts
- Facebook events for Rec Trac Migration, Halloween Happening, Mom/Son Bingo, Children's Playhouse-James and the Giant Peach & Marry Poppins JR., Preschool Open House, Recreation Music Classes, MLC events and Lincoln Marsh programs.

## **Partnerships:**

- Cooperative programming offered with Glen Ellyn, Winfield, Lombard, Bloomingdale, Warrenville and Carol Stream Park District to increase registration and program offerings.
- Partnerships with local government agencies including School District 200, Wheaton Fire Department, Wheaton Police Department and Wheaton Public Library.
- Lincoln Marsh partnered with the Conservation Foundation and the Glen Ellyn Park District.
- Maintained partnership with Kiwanis Club of Wheaton to co-host Fish-O-Rama.
- New Partnership was created with Wheaton North High School Theatre Department to share props and costumes with Children's Playhouse.
- Partnership with Marian Park to host Pop-Up Play Day in August 2022 to serve the children and residents who traditionally do not have the means to travel to or participate in offsite programs hosted by the park district.

# MARKETING CONTINUED



## WE ARE UPGRADING OUR REGISTRATION SOFTWARE

*An improved registration experience is coming in early October 2022!*

Explore options for creating or updating your household account at [wheatonparkdistrict.com/household](https://wheatonparkdistrict.com/household) or ask at the Community Center front desk.



**Systems will be unavailable during the upgrade on October 3 & 4.**

Registration forms will be accepted both days during hours of operation at:

**Community Center  
Mary Lubko Center  
DuPage County Historical Museum**






SUMMER Family Programs: JUNE + JULY

### Family Fun Canoeing

All ages | Northside Park Canoe Cabin  
Sunday, June 5 | 1-2:30P  
Saturday, July 23 | 9-10:00A

Paddle and explore the scenic Northside Park Lagoon. Participants will receive dry-land instruction on basic canoeing techniques from an experienced instructor. Then we'll take to the water for a staff-led exploration and discussion about the local natural history. Max of 3 people per canoe. Recommended for ages 6 and older.



### Wading and Scooping

Birth-17 | Lincoln Marsh Main Entrance  
Monday, June 6 | 4-5P  
Saturday, July 16 | 10-11A

Lincoln Marsh is alive with frogs, tadpoles, aquatic insects, turtles, and a host of other critters. Wade along its edges equipped with nets to catch and examine the fascinating wildlife of this valuable ecosystem.

### Go Fish

Birth-17 | Northside Park Boy Scout Cabin  
Saturday, June 11 | 9-10:00A  
Saturday, August 6 | 9-10:00A

Join us for some fishing fun! Learn basic techniques then see if you can find the best fishing spots. All equipment and bait will be provided or you can bring your own.

### Fish-O-Rama

**FREE**  
Saturday, June 10 | 8-11A | Northside Park

Bring your fishing poles to the annual Fish-O-Rama! Offered in cooperation with the Kiwanis Club of Wheaton, this event invites kids 15 and under, with an adult, to participate in our open fishing contest. Registration required.  
For details visit [lincolnmarch.org](https://lincolnmarch.org).

### Family Open Climb

Ages 6 & over | Lincoln Marsh Main Entrance  
Sunday, June 12 | 1-3P  
Sunday, July 10 | 1-3P  
Sunday, August 14 | 1-3P

Scale to new heights and check out our 60-foot climbing tower for a fun, challenging, and unique family experience. All experience levels welcome and will be outfitted with all equipment.

### Summer Discovery Hike

Birth-17 | Lincoln Marsh Main Entrance  
Monday, June 20 | 10-11A

Come discover with us as we celebrate the start of summer!

### Nature Art: Mud

Birth-17 | Prairie Patch Play Area  
Saturday, July 9 | 10-11A

Mud has been used by mankind for millennia to build homes, create pots, and yes, make art. We'll get down and dirty as we create, sculpt, and draw with mud.



Children must be accompanied by an adult.  
Register online at [WHEATONPARKDISTRICT.COM](https://WHEATONPARKDISTRICT.COM)

[lincolnmarch.org](https://lincolnmarch.org)

Wheaton Park District Children's Playhouse  
Production of:



**MARY POPPINS JR.**

A musical based on the classic of P.L. Travers and the 1964 Disney film

**FRIDAY, NOVEMBER 11 | 7P**  
**SATURDAY, NOVEMBER 12 | 2P**  
**SUNDAY, NOVEMBER 13 | 2P**  
**FRANKLIN MIDDLE SCHOOL**  
**211 E FRANKLIN ST., WHEATON, IL**

For tickets visit [wheatonparkdistrict.com](https://wheatonparkdistrict.com) or the Community Center

Director - Janet Ege Zimmerman  
Music Director - Aaron Zimmerman  
Choreographer - Rachael Zimmerman  
Stage Manager - Sara Jorilyn

Original Music and Lyrics by  
ROBERT M. SHERMAN and ROBERT B. SHERRMAN

New Songs and Additional Music and Lyrics by  
GEORGE STILES and ANTHONY DREW

Book by  
JULIAN FELLOWES      Co-Created by  
CAMERON MACINTOSH

Adapted by Theatrics under the supervision of Timothy Allen McDonald

MARY POPPINS® is a registered trademark of Travers and the 1964 Disney film. All authorized party events must follow and also register by MTI. MTIshows.com

# SPECIAL EVENTS

Each year the Recreation Department host several special events.  
Below are some highlights from 2022:

## HALLOWEEN HAPPENING



Guests enjoyed an evening of games, crafts, activities, and concessions. Popular activities included Trunk-or-Treat featuring nearly 20 community vehicles and the Trick-or-Treat Trail. With 50+ volunteers from the high school Key Clubs

Community Center  
Target Ages - All ages

Attendance  
1,000+

## MOTHER/SON BINGO



Moms and sons played bingo with a chance to win fabulous prizes!

Mary Lubko Center  
Target Ages- 4 to 10 , with an adult

Attendance  
60

## PIZZA WITH SANTA



Guests enjoyed craft and activity stations, pizza, and a special visit with Santa Claus.

Community Center  
Target Ages- All ages

Attendance  
250



# SPECIAL EVENTS CONTINUED

## DADDY DAUGHTER PRINCESS BALL



Dads and daughters made special memories at the ball while enjoying great music, dancing, sundae bar, and a surprise guest visit! Each family took home a photo to commemorate the enchanted evening.

Community Center  
Target Ages- 4 to 10

Attendance  
170

## MOVIE NIGHT OUT WITH THE WHEATON POLICE DEPARTMENT



The event featured Zootopia, a police themed Disney movie. Families enjoyed the free movie, glowsticks, police giveaways, checking out police vehicles and meeting officers.

Community Center  
Target Ages- All ages

Attendance  
500+

## MARIAN PARK POP-UP PLAY DAY



Marian Park residents enjoyed a day of crafts, activities, sports, games and treats!

Marian Park Apartments  
Target Ages- All ages

Attendance  
50+

# CAMPS

The Wheaton Park District summer camp programs thrive in the Wheaton community. We offer a variety of camps including six that are American Camp Association Accredited Camps. Camp locations and time frames vary. We strive to assure our camp programs are fun, safe, affordable and flexible.

Total Participation  
2,751



## TRENDS

- Wide variety of program offerings that make the Wheaton Park District an ideal option for campers who want new activities!
- Flexible registration options

## CHALLENGES

- Anticipated renovation of the Girl Scout Cabin possibly impacting summer camp operations.



## MOVING FORWARD

- Continue to offer the best quality summer camp options for the residents of Wheaton.
- Stay creative and innovative! Continue to strive to offer the best, most safe and affordable day camps in our community and surrounding community.
- Maintain current camp payment plan offering of 25% due at time of registration, followed by three additional 25% payments on June 1, July 1 and August 1.

# COMMUNITY CENTER

The Wheaton Park District Community Center is a 122,000 square foot recreation center located at 1777 S. Blanchard St. in Wheaton, IL. The Community Center houses Parks Plus Fitness Center, a 7,500 square foot fitness center, Kidz Kingdom Child Care, several meeting/specialty rooms and a new indoor track with improved surfacing and wider two lane format. Community Center frontline personnel happily assist patrons with activity registrations, purchasing passes and memberships, processing photo ID's and much more.

## TRENDS

- Successful Rec Trac 3.1 migration in October provided an improved registration experience for our users, especially on mobile devices.
- Phase 1 of Community Center interior renovation project was successfully completed in December 2022. Aesthetic improvements included paint, casework, doors, roller shades, carpet, luxury vinyl tile, chairs, tables and more!



## LEISURESHIP PROGRAM

The Wheaton Park District Leisureship Program was established to help provide recreation programs and facilities to all Wheaton Park District residents, regardless of economic situation. The Wheaton Park District provides free or reduced program/facility fees for qualified residents.

- 51 Families served
- \$15,825 in funds provided



## VISION STATEMENT

The Community Center is committed to meeting or exceeding facility expectations by providing fast, friendly and helpful service. We exist to promote a strong sense of community by ensuring the Community Center is available to and used by individuals, groups and organizations.

## MISSION STATEMENT

To provide a safe, inviting and well-maintained facility that meets the recreational, educational and social needs of the residents and user groups.

## MOVING FORWARD

- Interior renovation project
  - Phase 2- Parks Plus Fitness Center, locker rooms and lower- level classrooms.
- Staff will continue to learn Rec Trac 3.1 functionality by offering quarterly Rec Trac Academy training sessions to staff. These trainings will take a deeper dive into a specific topic each quarter.



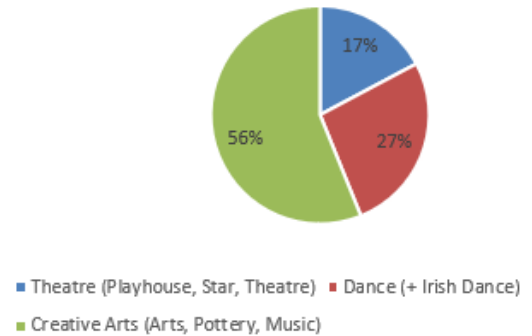
# CREATIVE & PERFORMING ARTS

The Wheaton Park District Creative Arts programs have goals to provide high-quality classes in a non-competitive environment. Participants are encouraged to become technically proficient in their craft and at the same time build self-esteem, cooperation, leadership skills and have fun! We offer unique opportunities, such as Pottery, that are not offered in the surrounding areas due to lack of supplies and equipment. These programs provide the participants with positive mental, physical and even emotional benefits.

## TRENDS

- Pottery programs continued to be successful in 2022 with a variety of options for youth and adult. Our unique pottery studio with multiple wheels and kilns draws participants from outside districts adding even more success.
- Children's playhouse produced two musicals, James and The Giant Peach Jr and Mary Poppins Jr, which sold 1,518 tickets.
- Private music lessons continue to be a popular offering with many returning participants year after year.

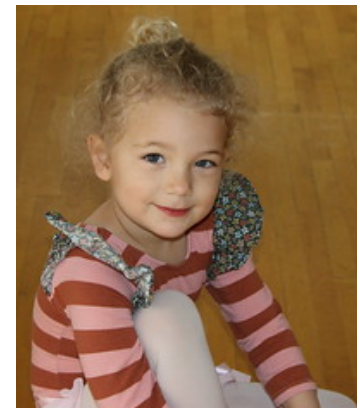
Program Attendance:  
1,595



## CHALLENGES

- The renovation of the Community Center second floor displaced some programs creating some changes in schedule including limiting class offerings and lowering maximums

Wheaton Park District  
**DANCE**



## MOVING FORWARD



- Additional theatre classes and two musical productions will be added in 2023
- Adult Ballroom and Adult Swing dance will return in 2023

# LINCOLN MARSH

Lincoln Marsh Natural Area is 151 acres of woodland, wetland, and prairie ecosystems, which are highly valued for recreation, education, and environmental reasons.

## MISSION

To increase awareness and appreciation for our connections to the earth and to each other through educational and social experiences in a healthy ecosystem.

## Nature Discovery

Hands-on activities promote interaction with and appreciation of the natural world through discovery and exploration. Programs are offered for ages 18 months-adult and include scout badge programs, field trip and outreach programs for schools and groups, birthday parties, quarterly guide programs for individuals and families, and day camps. We also offer snowshoe and GPS rentals, Nature to Go Kits, and Discover! Packs.

## Challenge Course

Through fun and enriching experiences targeted to the goals of each group, participants work together to solve problems, reflect on their experiences, and apply lessons to real-life situations. In 2022, program options expanded to include the Climbing Tower, Travel Cooperative Games, and Adventure Walk.

## TRENDS

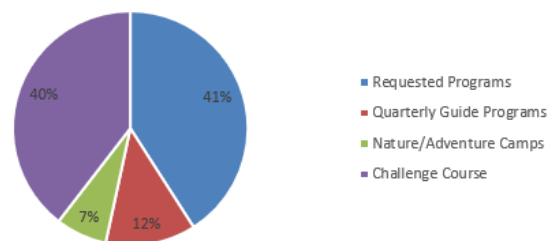
- Scavenger hunt program themes continue to expand and now include a family friendly Halloween Monster Hunt.
- Teaming with Nature was introduced. This customizable, full-day program incorporates Challenge Course, Nature Discovery, and Outdoor Adventure programs to accommodate larger groups.
- Lincoln Marsh summer camp participation continues to grow with a 21% increase in participation from 2021.

## CHALLENGES

- Requested programs from schools and groups have increased from 2021 but are still slow to return to pre-pandemic levels.
- There was a decline in participation in Wheaton Park District Quarterly Guide programs in 2022. During the pandemic we saw an increase in participation due to Lincoln Marsh programs being held outdoors and now there are more program options available throughout the community.
- Continued decline in scout badge program requests.



Program Attendance:  
7,239



## MOVING FORWARD

- Continue to find new ways to engage with the community and requested groups through programs and opportunities and adapt offerings based on trends and interests.

# MARY LUBKO CENTER

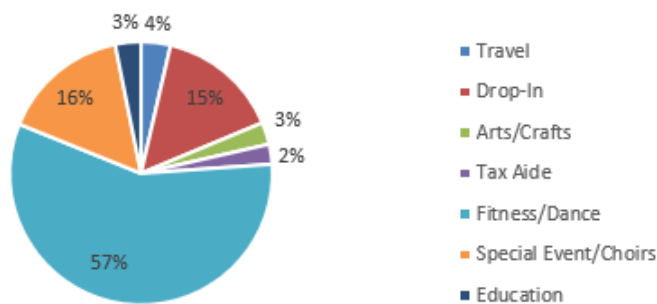
The Mary Lubko Center (MLC) is located inside the historical, red brick building inside Memorial Park. The former coach house of Judge Elbert Gary was built in 1888 and is the current home of the Wheaton Park District senior center. Mary Lubko served as the first director of the center from 1970 to 1990 and the building was renamed in her honor in 2017.

The MLC offers a variety of programming including day trips, extended travel, fitness classes, dance classes, 2 performing choirs, a cycling group, volleyball, craft classes, special events, bridge instruction, driving programs, free tax aid services, and education seminars. The MLC is also available to rent for small gatherings such as bridal showers, baby showers, birthday parties, holiday parties and celebrations of life.

## TRENDS

- Day Trips – our tours remain popular not only with Wheaton residents, but also the surrounding communities. Almost 40% of our travelers are non-residents.
- Drop-in Groups – our card and game players continue to grow with the addition of new groups like cribbage and additional sections of bridge.
- Fitness Classes – the popularity of our fitness classes has grown with the addition of Better Balance and the move of our yoga classes from the Community Center to the MLC.
- Pedal Pushers – our cycling group continues to add new members to their roster. They currently have over 150 members in their active group.
- Crafternoons – our monthly in-person craft classes are growing in numbers, due largely in part to the fun, interactive projects lead by MLC staff.

Program Attendance:  
11,921



## CHALLENGES

The virtual brochure offered in the majority of 2022 was a difficult transition for our patrons. We saw a decline in the number of registrations based on only sending the brochure via eblast as opposed to mailing copies to members' homes. In the fall of 2022, we resumed the printing and mailing of the MLC News and noticed an immediate uptick in registrations.



## MOVING FORWARD



In 2023, the MLC is working with the Fitness Manager to offer neuro-specific fitness classes. As our requests to host weddings increase, we are working on creating a full-service wedding package for our rental patrons.



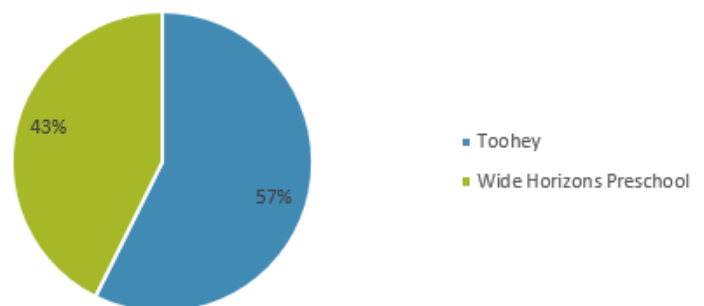
# PRESCHOOL & EARLY CHILDHOOD

Wide Horizons Preschool is a play-based preschool program which has been a staple in our community since the 1970's. The preschool program provides our youngest residents a safe and welcoming learning environment, focused on building confidence, kindergarten readiness and social and emotional development. Toohey Park hosts a variety of early childhood classes for ages 1-6. These classes focus on "learning through play" and work to build socialization skills, cooperative play skills, and fine and gross motor development. Safety City, a miniature downtown Wheaton, complete with buildings, sidewalks and traffic signals provides children a unique opportunity to learning all things safety! Our early childhood special interest programs allow participants the opportunity to experience music classes, cooking programs, early childhood athletics, birthday parties, special events, arts & crafts and more!

## TRENDS

- Assure our classes are offered at the most appropriate time and price to make it easier on the families to sign up for multiple programs.
- Continue to work with Kidz Kingdom and Parks Plus Fitness Center to offer before/after preschool care services to our families.
- Parents like to build their child's week based on their child's own special interests and schedule.

Program Attendance:  
490



## CHALLENGES

- Anticipated first level Community Center renovations impacting preschool classrooms.



## MOVING FORWARD



- Strive to continuously offer the popular, as well as new, early childhood programming to stay current with trends in the market.
- Continue to allow our current families the opportunity to register during "priority registration" prior to resident registration date.
- Maintain affordable registration options, with only a \$50 enrollment fee to hold your space and monthly payment options.

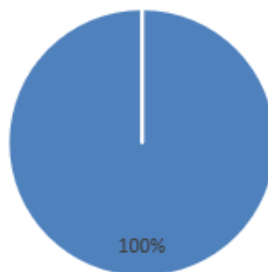
# VARIED INTEREST

Varied Interest programs offered through the Wheaton Park District include workshop opportunities, computer classes, horsemanship, volunteerism, babysitting, magic, technology, science, trips, teens, foreign language and more. Classes are held at the Community Center, contractual satellite locations and cooperative Park District partnership facilities.

## TRENDS

- Multiple Magic classes were offered which were successful and well attended
- Foreign Language continued to be offered as a hybrid approach with virtual and in-person classes creating much success in this area.
- Youth Tech Inc Summer Camps were a tremendous success in the summer of 2022 with all sections offered full.

Program Attendance:  
500



■ Programs including Ice Skating, Glitzy Girls, Horsemanship, Science, Magic, CIDK, Zone Parties, etc.

## CHALLENGES

- The renovation of the Community Center second floor displaced some programs creating some changes in schedule including limiting class offerings and lowering maximums,
- Programming space during summer months continues to pose a challenge with camp programs taking up majority of indoor space available at the Community Center.



## MOVING FORWARD

- Continued research to offer innovative and relevant programs to the community
- Retention of quality contractors will bring continued success and growth for contractual programs in the Varied Interest business unit.
- Classes can return to using rooms on the second floor of the Community Center for 2023 creating more opportunities for offerings

# TESTIMONIALS

"I loved that my daughter got to try out dance for an affordable price. It was a great length of time, the recital was a lot of fun and she felt accomplished." -Little Lyrical Parent

"The pumpkin party was so fun and had the perfect range of activity options from a little pumpkin scavenger hunt path, a couple of games, and then some fine motor skill sit-down options. My daughter loved it and was entertained for the full hour! Loved the go-at-your-own-pace style of stations." - Pumpkin Party Parent

*"This is hands down one of the best summer programs offered by the Wheaton Park District for little kids. They have it down like a well-oiled machine and the kids learn so much fundamental important information all while having fun."*  
- Safety City Parent

"This was our first year at Camp No Name. I was blown away by the quality of the counselors and the excellent programming. My daughter loved going to camp and we felt so fortunate to send her there! Best Summer!" -Camp No Name Parent

"I am a resident of Wheaton and use the senior center weekly. I wanted to let you know the staff, especially Megann, are terrific. Always friendly, helpful and accommodating. Megann went out of her way to help me with a craft project. So helpful! I really enjoy everything including the day trips. I thought you should know you've got a winner at the Mary Lubko Center!" - MLC Participant

"I was VERY THANKFUL to have a program to attend with my daughter. I enjoyed spending time with her in something dance related."  
-Mommy & Me Mini-Ballet Parent

"Our son's 8th birthday party treasure hunt was so much fun! It was a great way to gather his friends for an interactive, team-based outdoor game that held their attention and made them think! Most of his friends had never geocached before, but they caught on quickly, and all reported having so much fun!" -Birthday Party Parent

*"The teachers created a very fun learning environment for these kids. My daughter wants to continue dance because of this class."* -Pre-Ballet Parent

**"I REALLY LIKE THE WAY THAT THE FACILITATORS ALLOW THE KIDS TIME TO WORK THINGS OUT. TRY - FAIL - LEARN - TRY AGAIN IS A SEQUENCE REPEATED AT THE LINCOLN MARSH AND IT IS INVALUABLE TO THESE KIDS. PERSEVERANCE IS SOMETHING MANY OF THEM LACK. THEY ARE THE GENERATION OF IMMEDIATE GRATIFICATION, BUT AT LINCOLN MARSH, THEY NEED PATIENCE, PERSEVERANCE, AND TEAMWORK. THE FACILITATORS DO A GREAT JOB OF LETTING THEM FAIL AND NOT LEADING THEM TOO QUICKLY TO HINTS."**  
-IMMACULATE CONCEPTION GRADE SCHOOL

"I wanted to say thank you for helping to make my son's first birthday party a success. Everything went smoothly for my rental and I couldn't be more appreciative. Our attendant was very responsive and helpful as well. All of our guests commented on the beautiful space and comfy chairs!" - MLC Rental Patron

"Such a great program and first summer camp experience for my 3-year old. Loved the themes; staff were fantastic and were always very welcoming and prepared each day. Than you for a fantastic summer Wheaton Park District!"  
-Super Tots Parent





# RECREATION