

I am going to the DuPage County Historical Museum.



I may need to walk through downtown Wheaton to get to the Museum.



When walking, I will stay by my family or friends so I stay safe.



The main entrance to the Museum has stairs. If I need an elevator, there is an accessible entrance located on Main Street.



It's okay to feel excited, curious, or unsure about visiting the Museum.



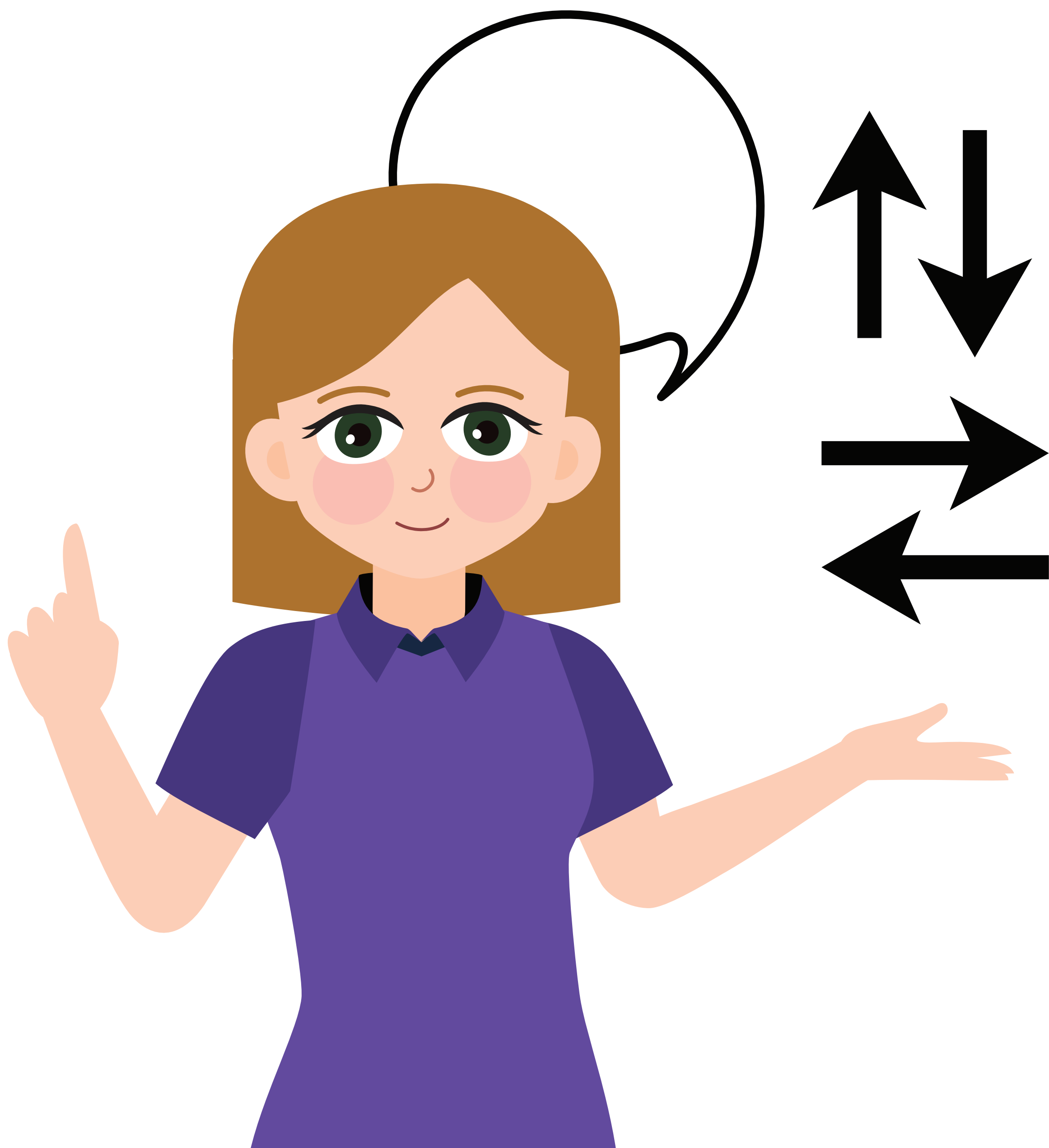
The Museum is a quiet space to learn about local history.



When I arrive, I will stop at the front desk first.



A staff member will tell me what exhibits are on display and where they are in the building.



During my visit, if I need help or have any questions, I can ask the front desk staff.



If it feels too loud or busy, I can wear headphones, step outside, or ask to go to a quieter area.



The front desk also has a Sensory bag I can borrow. It has headphones and fidget tools.



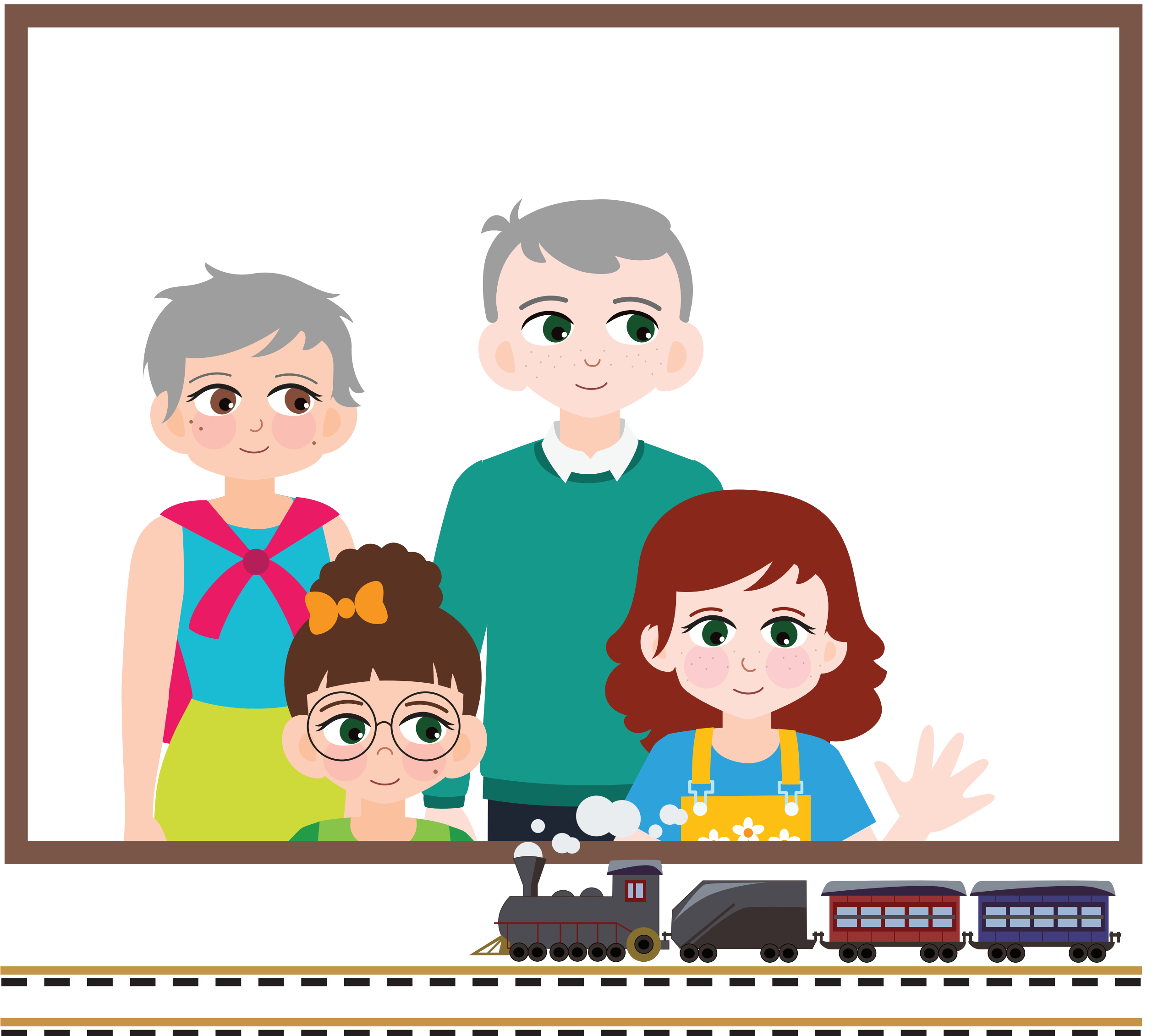
The first floor has three different exhibits for me to visit.



There is also a gift shop that has books, toys, trinkets and collectibles.



The downstairs area has an exhibit,  
play area and mini railroad replica  
with different trains!



The trains are motion activated and will move along the track when I wave at the blue light.



The second floor also has a large space where pop up exhibits and events are held.



After I am done exploring the Museum and its exhibits, I will say goodbye to the front desk staff and leave with my family or friends.

